

WAAS CH 86923 W16A	APP CRS 157°	Rwy Idg THRE 521 Apt Elev 533
--	------------------------	---

RNAV (GPS) RWY 16

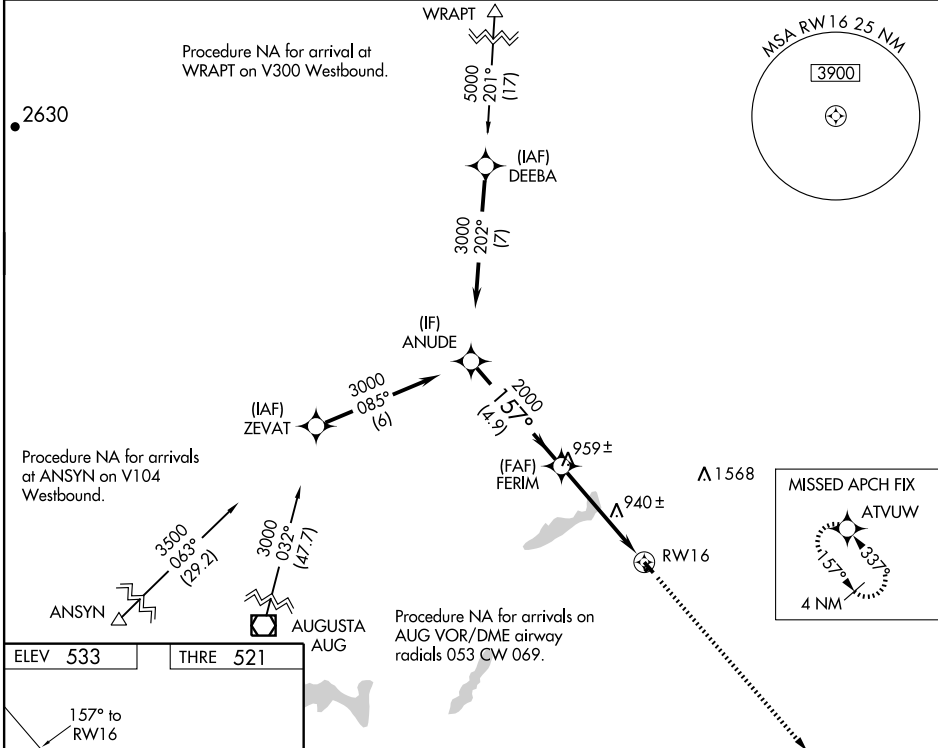
DEXTER RGNL (1BØ)

⚠ DME/DME RNP-0.3 NA. Procedure NA at night. Visibility reduction by helicopters NA.
⚠ NA Use Bangor altimeter setting, when not received use Augusta altimeter setting and increase all MDA 40 feet.

MISSED APPROACH: Climb to 3000 direct ATUVW and hold.

BANGOR APP CON
118.925 239.3

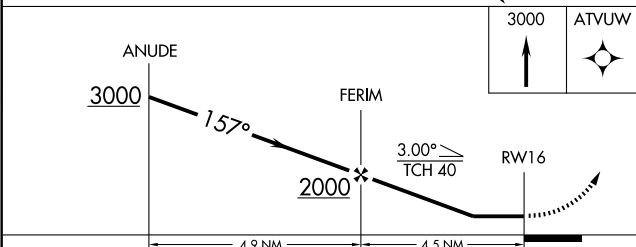
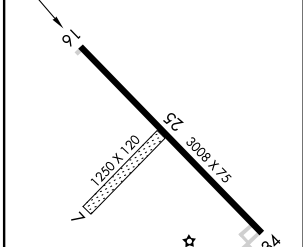
UNICOM
122.8 (CTAF) 0



NE-1, 31 MAY 2012 to 28 JUN 2012

NE-1, 31 MAY 2012 to 28 JUN 2012

ELEV 533	THRE 521
----------	----------



CATEGORY	A	B	C	D
LP MDA	1260-1	739 (800-1)		NA
LNAV MDA	1300-1 779 (800-1)	1300-1¼ 779 (800-1¼)		NA
CIRCLING	1300-1 767 (800-1)	1320-1¼ 787 (800-1¼)		NA

WAAS CH 65723 W34A	APP CRS 337°	Rwy Idg THRE 524 Apt Elev 533
--	------------------------	---

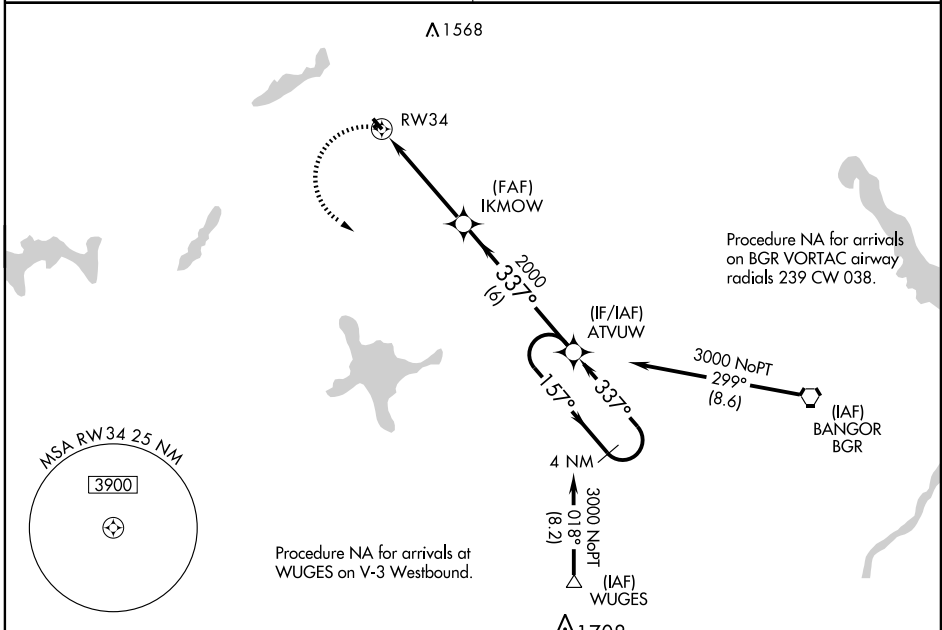
RNAV (GPS) RWY 34

DEXTER RGNL (1BØ)

⚠ Procedure NA at night. DME/DME RNP-0.3 NA. Visibility reduction by helicopters NA. Use Bangor altimeter setting, when not received, use Augusta altimeter setting and increase all MDA 40 feet, increase Circling Cat B visibility ¼ mile.

⚠ MISSED APPROACH: Climbing left turn to 3000 direct ATVUW and hold.

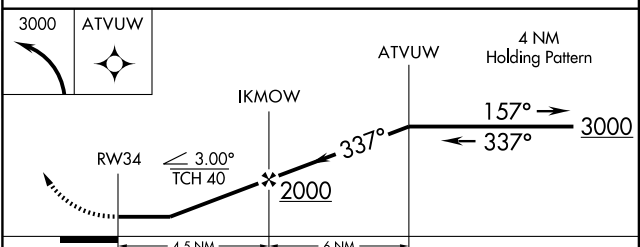
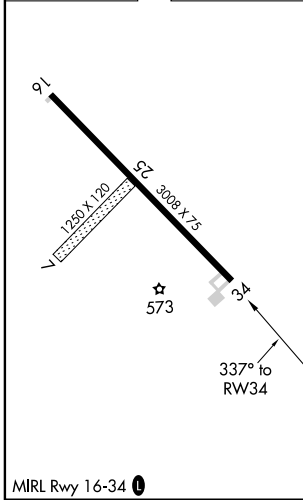
BANGOR APP CON 118.925 239.3	UNICOM 122.8 (CTAF) 1
--	---------------------------------



NE-1, 31 MAY 2012 to 28 JUN 2012

NE-1, 31 MAY 2012 to 28 JUN 2012

ELEV 533	THRE 524
----------	----------



CATEGORY	A	B	C	D
LP MDA	980-1	456 (500-1)	NA	
LNAV MDA	1140-1	616 (700-1)	NA	
CIRCLING	1220-1 687 (700-1)	1320-1 787 (800-1)	NA	