

APP CRS 272°	Rwy ldg TDZE Apt Elev	5400 213 225
------------------------	-----------------------------	---

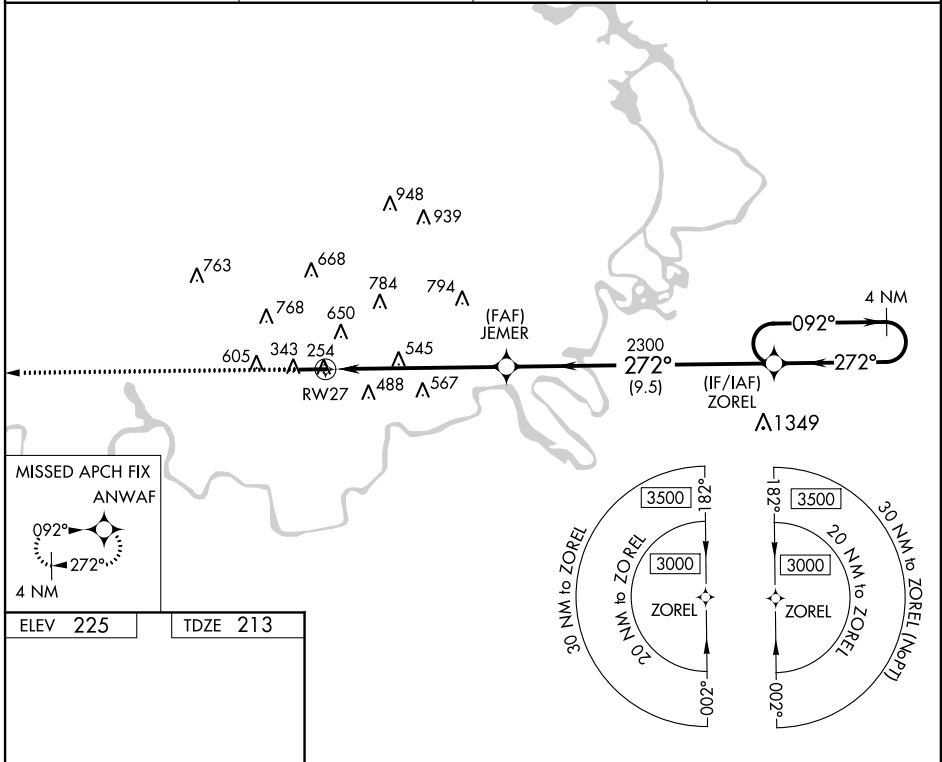
RNAV (GPS) RWY 27

PRATTVILLE-GROUBY FIELD (1A9)

⚠ Use Montgomery Rgnl (Dannelly Field) altimeter setting; when not received, use Alexander City altimeter setting and increase all MDA 140 feet. Increase LNAV visibility Cat B ¼ mile; visibility Cat C and D ⅓ mile. Increase Circling Cat B and D visibility ¼ mile; Cat C visibility ½ mile. Procedure NA at night for Cats C/D aircraft. Night landing Rwy 9 NA. DME/DME RNP-0.3 NA. Helicopter visibility reduction below ¼ SM NA.

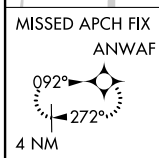
MISSED APPROACH:
Climb to 3100 direct ANWAF and hold.

AWOS-3P 118.025	MONTGOMERY APP CON ★ 121.2 269.05	GCO 121.725	UNICOM 122.8 (CTAF) 📻
---------------------------	---	-----------------------	--



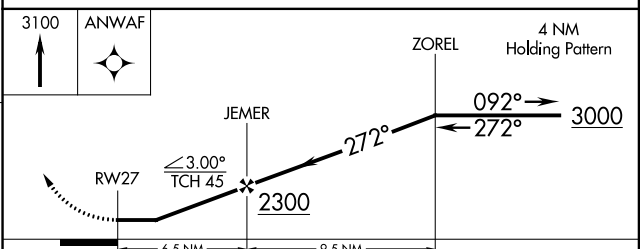
SE-4, 08 JAN 2015 to 05 FEB 2015

SE-4, 08 JAN 2015 to 05 FEB 2015



ELEV 225	TDZE 213
----------	----------

Profile view diagram showing a 5400 X 100 slope and 0.5% UP gradient. Includes a star symbol and a note: MIRL Rwy 9-27 (📻) REL Rws 9 and 27.



CATEGORY	A	B	C	D
LNAV MDA	860-1	647 (700-1)	860-1 7/8	647 (700-1 7/8)
CIRCLING	1040-1 1/4	815 (900-1 1/4)	1040-2 1/2 815 (900-2 1/2)	1100-2 3/4 875 (900-2 3/4)

APP CRS 092°	Rwy Idg 5400
	TDZE 225
	Apt Elev 225

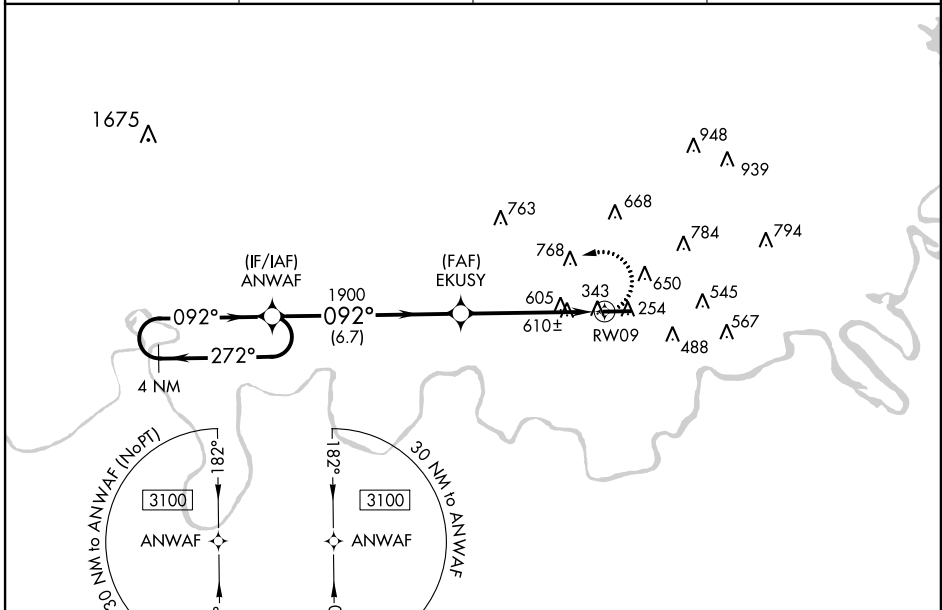
RNAV (GPS) RWY 9

PRATTVILLE-GROUBY FIELD (1A.9)

NA Use Montgomery Rgnl (Dannelly Field) altimeter setting; when not received, use Alexander altimeter setting and increase all MDA 140 feet. Increase LNAV Cat A visibility ¼ mile, Cat C/D ½ mile and Circling Cat B visibility ¼ mile, Cat C ½ mile, Cat D ¾ mile. Procedure NA at night. Helicopter visibility reduction below 1 SM NA. DME/DME RNP-0.3 NA.

MISSED APPROACH:
Climbing left turn to 3100 direct ANWAF and hold.

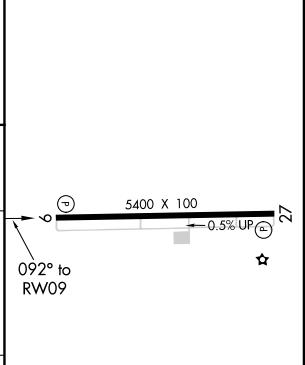
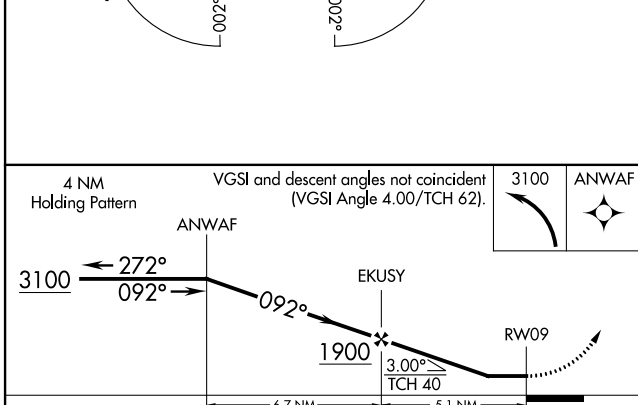
AWOS-3P 118.025	MONTGOMERY APP CON ★ 121.2 269.05	GCO 121.725	UNICOM 122.8 (CTAF)
---------------------------	---	-----------------------	-------------------------------



SE-4, 08 JAN 2015 to 05 FEB 2015

SE-4, 08 JAN 2015 to 05 FEB 2015

ELEV 225	TDZE 225
----------	----------



CATEGORY	A	B	C	D
LNAV MDA	980-1 755 (800-1)	980-1¼ 755 (800-1¼)	980-2	755 (800-2)
CIRCLING	1040-1¼	815 (900-1¼)	1040-2½ 815 (900-2½)	1100-2¾ 875 (900-2¾)

MIRL Rwy 9-27
REIL Rws 9 and 27

VORTAC MGM 112.1 Chan 58	APP CRS 140°	Rwy Idg TDZE Apt Elev N/A N/A 225
--	------------------------	---

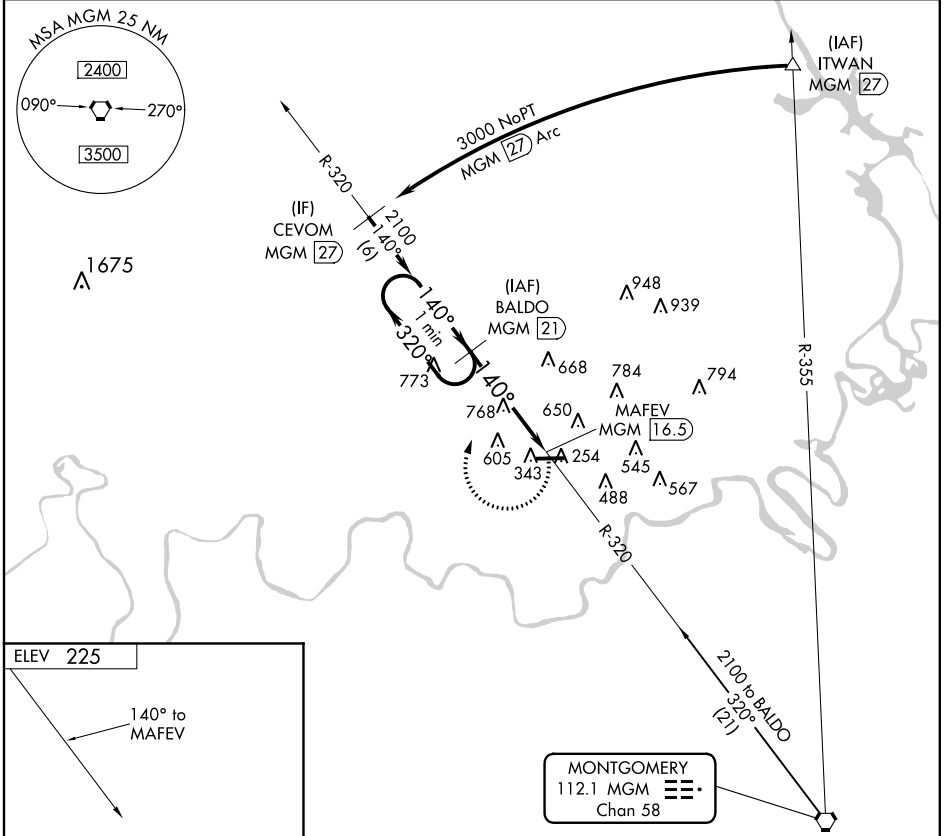
VOR/DME-A

PRATTVILLE-GROUBY FIELD (1A9)

▼ Use Montgomery altimeter setting; if not received, use Alexander City altimeter setting and increase all MDAs 140 feet. Procedure **NA** at night. Helicopter visibility reduction below 1 SM NA.

MISSED APPROACH: Climbing right turn to 2100 via MGM VORTAC R-320 to BALDO/21 DME and hold.

AWOS-3P 118.025	MONTGOMERY APP CON ★ 121.2 269.05	GCO 121.725	UNICOM 122.8 (CTAF) 0
---------------------------	---	-----------------------	---------------------------------



ELEV 225

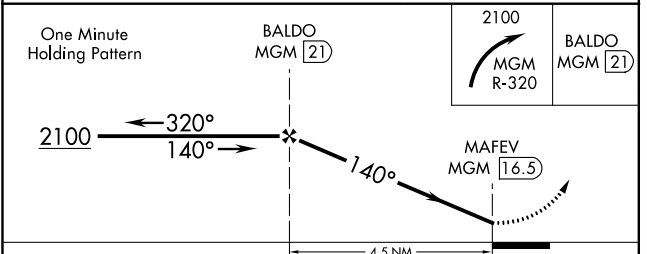
140° to MAFEV

5400 X 100

0.5% UP

MIRL Rwy 9-27

REIL Rwys 9 and 27



CATEGORY	A	B	C	D
CIRCLING	1060-1 835 (900-1)	1060-1¼ 835 (900-1¼)	1060-2½ 835 (900-2½)	NA

SE-4, 08 JAN 2015 to 05 FEB 2015

SE-4, 08 JAN 2015 to 05 FEB 2015