

APP CRS 272°	Rwy Idg 5400
	THRE 198
	Apt Elev 225

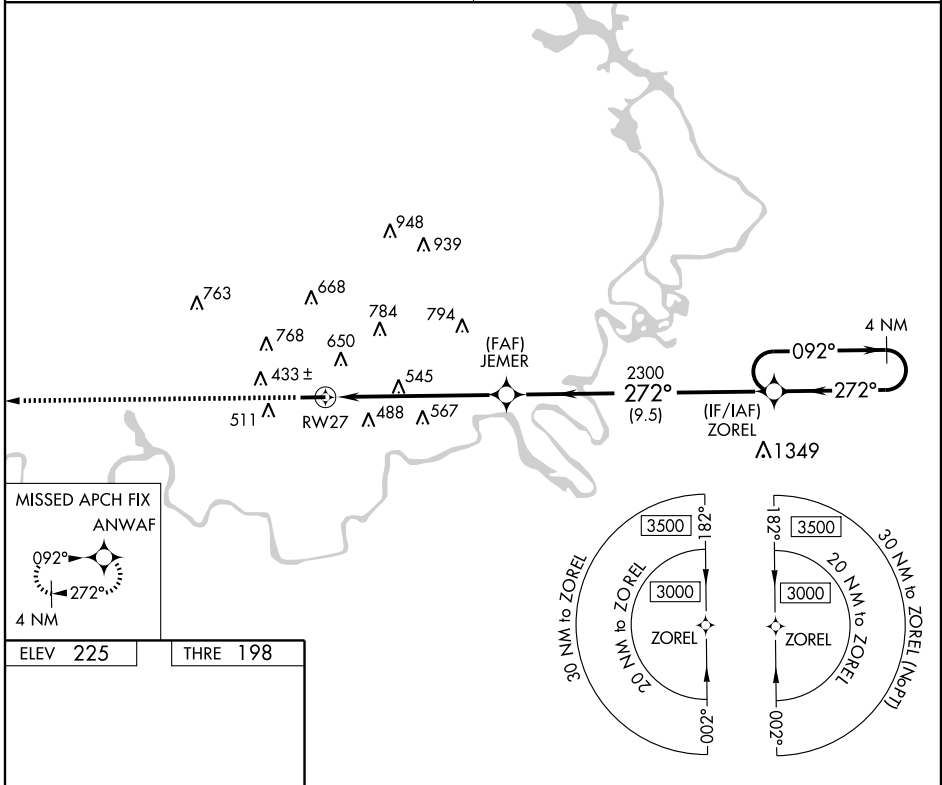
RNAV (GPS) RWY 27

PRATTVILLE-GROUBY FIELD (1A9)

▼ Use Montgomery Rgnl (Dannelly Field) altimeter setting; when not received, use Alexander City altimeter setting and increase all MDA 140 feet. Increase LNAV visibility Cat B ¼ mile; visibility Cat C and D ⅜ mile. Increase Circling Cat B and D visibility ¼ mile; Cat C visibility ½ mile. When VGSI inop, procedure NA at night. DME/DME RNP-0.3 NA. Visibility reduction by helicopters NA.

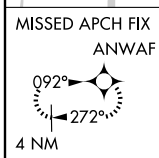
▲ NA MISSED APPROACH: Climb to 3100 direct ANWAF and hold.

MONTGOMERY APP CON★ 121.2 380.225	UNICOM 122.8 (CTAF) 0
---	---------------------------------

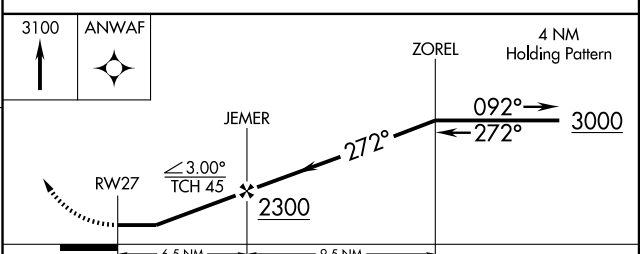
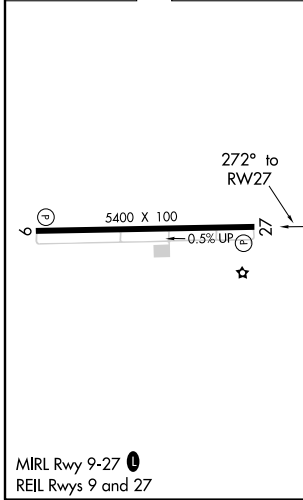


SE-4, 31 MAY 2012 to 28 JUN 2012

SE-4, 31 MAY 2012 to 28 JUN 2012



ELEV 225	THRE 198
----------	----------



CATEGORY	A	B	C	D
LNAV MDA	860-1	662 (700-1)	860-1⅞	662 (700-1⅞)
CIRCLING	1040-1¼	815 (900-1¼)	1040-2½ 815 (900-2½)	1100-2¾ 875 (900-2¾)

APP CRS 092°	Rwy Idg THRE Apt Elev	5400 225 225
------------------------	-----------------------------	---

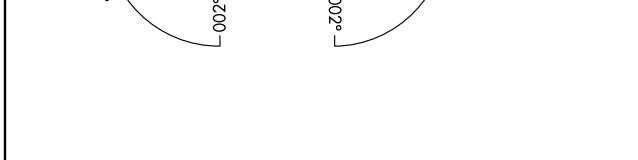
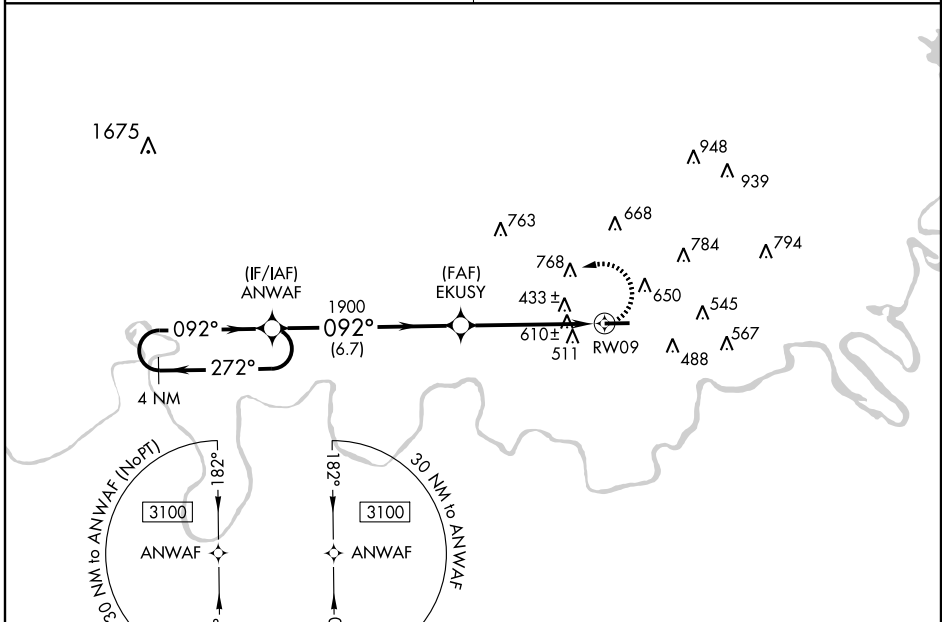
RNAV (GPS) RWY 9

PRATTVILLE-GROUBY FIELD (1A.9)

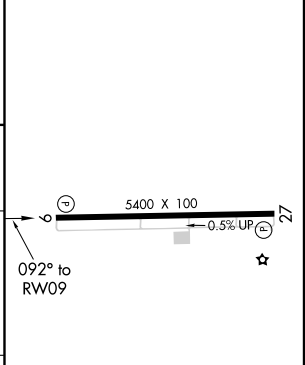
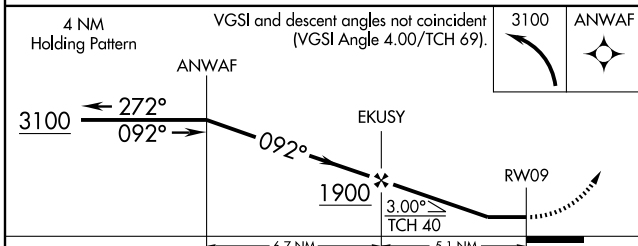
NA Use Montgomery Rgnl (Dannelly Field) altimeter setting; when not received, use Alexander City altimeter setting and increase all MDA 140 feet. Increase LNAV visibility Cat B 1/4 mile; visibility Cat C and D 5/8 mile. Increase Circling Cat B and D visibility 1/4 mile; Cat C visibility 1/2 mile. When VGSI inop, procedure NA at night. Visibility reduction by helicopters NA. DME/DME RNP-0.3 NA.

MISSED APPROACH:
Climbing left turn to 3100 direct ANWAF and hold.

MONTGOMERY APP CON *	UNICOM
121.2 380.225	122.8 (CTAF) 0



ELEV 225	THRE 225
----------	----------




CATEGORY	A	B	C	D
LNAV MDA	900-1	675 (700-1)	900-1 7/8	675 (700-1 7/8)
CIRCLING	1040-1 1/4	815 (900-1 1/4)	1040-2 1/2	1100-2 3/4
			815 (900-2 1/2)	875 (900-2 3/4)

MIRL Rwy 9-27 0
REIL Rws 9 and 27

SE-4, 31 MAY 2012 to 28 JUN 2012

SE-4, 31 MAY 2012 to 28 JUN 2012



12152

ALBANY, GA**SOUTHWEST GEORGIA RGNL**

TAKE-OFF MINIMUMS: **Rwy 34**, 300-2 or std. w/ min. climb of 255' per NM to 600.

DEPARTURE PROCEDURE: **Rwy 4**, climb heading 044° to 700 before turning left. **Rwy 34**, climb heading 344° to 700 before turning right.

NOTE: **Rwy 4**, multiple trees and tank beginning 913' from departure end of runway, 383' left of centerline, up to 127' AGL/329' MSL. Multiple trees beginning 1985' from departure end of runway, 797' right of centerline, up to 79' AGL/275' MSL. **Rwy 16**, multiple trees beginning 1044' from departure end of runway, 310' left of centerline, up to 59' AGL/253' MSL. Multiple trees beginning 1977' from departure end of runway, 81' right of centerline, up to 92' AGL/286' MSL. **Rwy 22**, tree 1461' from departure end of runway, 793' left of centerline, 81' AGL/250' MSL. Pole 1093' from departure end of runway, 731' left of centerline, 61' AGL/230' MSL. **Rwy 34**, multiple trees beginning 426' from departure end of runway, 14' left of centerline up to 82' AGL/277' MSL. Multiple trees beginning 477' from departure end of runway, 14' right of centerline, up to 58' AGL/253' MSL.

ALBERTVILLE, AL**ALBERTVILLE RGNL/THOMAS J BRUMLIK FIELD**

NOTE: **Rwy 5**, trees beginning 18' from departure end of runway, 353' left of centerline, up to 56' AGL/1088' MSL. Trees beginning 724' from departure end of runway, 687' right of centerline, up to 60' AGL/1092' MSL. Poles beginning 12' from departure end of runway, 428' left of centerline, up to 24' AGL/1056' MSL. Terrain beginning 30' from departure end of runway, 108' left of centerline, 0' AGL/1047' MSL. Terrain 30' from departure end of runway, 58' right of centerline, 0' AGL/1050' MSL. **Rwy 23**, trees beginning 47' from departure end of runway, 469' right of centerline, up to 14' AGL/1017' MSL. Terrain 36' from departure end of runway, 346' right of centerline, 0' AGL/1004' MSL.

ALEXANDER CITY, AL**THOMAS C. RUSSELL FIELD (ALX)
AMDT 2 10154 (FAA)**

TAKE-OFF MINIMUMS: **Rwy 36**, 300-1½ or std. w/ min. climb of 220' per NM to 1000, or alternatively, with standard take-off minimums and a normal 200' per NM climb gradient, take-off must occur no later than 1500' prior to DER.

DEPARTURE PROCEDURE: **Rwy 36**, climb heading 358° to 1300 before turning east.

NOTE: **Rwy 18**, rising terrain and trees beginning at DER, left and right of centerline, up to 100' AGL/759' MSL. **Rwy 36**, trees beginning at DER, left and right of centerline, up to 100' AGL/859' MSL. Vehicle on road 37' from DER, 267' right of centerline, 17' AGL/696' MSL. Trees 5401' from DER, 1921' left of centerline, 100' AGL/839' MSL.

ALMA, GA**BACON COUNTY**

NOTE: **Rwy 33**, trees 2821' from departure end of runway, 247' right of centerline, 70' AGL/274' MSL.

AMERICUS, GA**JIMMY CARTER RGNL (ACJ)****AMDT 2 11349 (FAA)**

NOTE: **Rwy 5**, fence 26' from DER, 471' left of centerline, 13' AGL/464' MSL. Trees beginning 179' from DER, left and right of centerline, up to 90' AGL/541' MSL. **Rwy 9**, trees beginning 35' from DER, left and right of centerline, up to 116' AGL/557' MSL. **Rwy 23**, vehicles on roadway abeam DER, 179' left of centerline, up to 15' AGL/481' MSL. Trees beginning 65' from DER, left and right of centerline, up to 92' AGL/537' MSL. Poles beginning 1085' from DER, 310' right of centerline, up to 44' AGL/505' MSL. **Rwy 27**, vehicles on roadway 479' from DER, 619' right of centerline, up to 15' AGL/484' MSL. Trees beginning 2275' from DER, 285' left of centerline, up to 100' AGL/569' MSL.

ANDALUSIA/OPP, AL**SOUTH ALABAMA RGNL AT BILL BENTON FIELD**

NOTE: **Rwy 11**, multiple trees beginning 379' from departure end of runway, 279' left of centerline, up to 59' AGL/368' MSL. Multiple trees beginning 1478' from departure end of runway, 687' right of centerline, up to 71' AGL/380' MSL. **Rwy 29**, multiple trees beginning 93' from departure end of runway, 490' left of centerline, up to 85' AGL/394' MSL. Multiple trees beginning 40' from departure end of runway, 353' right of centerline, up to 66' AGL/375' MSL.

ANNISTON, AL**ANNISTON RGNL (ANB)****AMDT 6A 12040 (FAA)**

DEPARTURE PROCEDURE: **Rwy 5**, Climbing right turn to intercept TDG VOR/DME R-085 outbound climb to 3000 before proceeding on course. **Rwy 23**, Climb heading 229° to 1300 then turn right direct TDG VOR/DME.

NOTE: **Rwy 5**, tree 1147' from DER, 730' left of centerline, 77' AGL/689' MSL. Sign 2269' from DER, 903' left of centerline, 100' AGL/712' MSL. Bush 493' from DER, 385' left of centerline, 33' AGL/645' MSL. Railroad 197' from DER, 435' left of centerline, 25' AGL/637' MSL. Tree 1965' from DER, 275' left of centerline, 69' AGL/681' MSL. Pole 506' from DER, 549' right of centerline, 24' AGL/636' MSL. **Rwy 23**, tree 4545' from DER, 1238' left of centerline, 79' AGL/717' MSL.

31 MAY 2012 to 28 JUN 2012

31 MAY 2012 to 28 JUN 2012

12152



L2

SE-4

ATHENS, GA

ATHENS/BEN EPPS (AHN)

AMDT 1A 08129 (FAA)

DEPARTURE PROCEDURE: **Rwy 2**, climb heading 021° to 2300 before turning West.

NOTE: **Rwy 2**, trees beginning 1168' from departure end of runway, 132' left of centerline, up to 90' AGL/870' MSL.

Trees beginning 1064' from departure end of runway, 18' right of centerline, up to 90' AGL/856' MSL. Light on hangar 161' from departure end of runway, 392' left of centerline, 20' AGL/819' MSL. **Rwy 9**, tree 2114' from departure end of runway, 565' left of centerline, 100' AGL/824' MSL. Tree 1021' from departure end of runway, 674' right of centerline, 121' AGL/820' MSL. **Rwy 20**, trees beginning 964' from departure end of runway, 144' left of centerline, up to 86' AGL/856' MSL. Numerous trees and bushes beginning 81' from departure end of runway, 89' right of centerline, up to 74' AGL/834' MSL. Rising terrain beginning 85' from departure end of runway, 8' right of centerline, to 335' left of centerline, 791' MSL. **Rwy 27**, trees beginning 375' from departure end of runway, 385' left of centerline, up to 110' AGL/809' MSL. Trees beginning 106' from departure end of runway, 407' right of centerline, up to 63' AGL/803' MSL. Antenna 1023' from departure end of runway, 365' left of centerline, 50' AGL/791' MSL.

ATLANTA, GA

ATLANTA RGNL FALCON FIELD (FFC)

AMDT 2 11069 (FAA)

TAKE-OFF MINIMUMS: **Rwy 31**, 300-1.

NOTE: **Rwy 13**, trees beginning 960' from DER, 51' right of centerline, up to 98' AGL/877' MSL. Trees beginning 377' from DER, 465' left of centerline, up to 88' AGL/887' MSL. **Rwy 31**, trees beginning 288' from DER, 538' right of centerline, up to 100' AGL/999' MSL.

COBB COUNTY-MCCOLLUM FIELD (RYY)

AMDT 2 09071 (FAA)

TAKE-OFF MINIMUMS: **Rwy 9**, 200-1½ or std. w/ min. climb of 223' per NM to 1400, or alternatively, with standard takeoff minimums and normal 200'/NM climb gradient, takeoff must occur no later than 1800' prior to departure end of runway. **Rwy 27**, 300-1½.

DEPARTURE PROCEDURE: **Rwy 9**, climb heading 093° to 1900 before proceeding south. **Rwy 27**, climb heading 273° to 1600 before proceeding southeast.

NOTE: **Rwy 9**, trees 1048' from DER, 588' left of centerline, up to 99' AGL/1039' MSL. Terrain 27' from DER, 375' right of centerline, 0' AGL/1005' MSL. Trees 1.4 NM from DER, 2561' right of centerline, up to 100' AGL/1239' MSL. **Rwy 27**, multiple vehicles on roads, buildings, railroads, and trees beginning 152' from DER, 17' left of centerline, up to 100' AGL/1179' MSL. Multiple vehicles on roads, buildings, railroads, and trees beginning 262' from DER, 6' right of centerline, up to 100' AGL/1159' MSL. Trees 1.4 NM from DER, 2670' left of centerline, up to 100' AGL/1259' MSL.

ATLANTA, GA (CON'T)

DEKALB-PEACHTREE (PDK)

AMDT 1 08157 (FAA)

TAKE-OFF MINIMUMS: **Rwy 2L**, 200-1½ or standard w/ min. climb of 270' per NM to 1300. **Rwy 2R**, 200-1 or std. w/ min. climb of 322' per NM to 1200. **Rwy 20R**, std. w/ min. climb of 316' per NM to 2400 or 1400-3 for climb in visual conditions. **Rwy 34**, std. w/ min. climb of 264' per NM to 1800 or 1400-3 for climb in visual conditions.

DEPARTURE PROCEDURE: **Rwy 9**, climb heading 088° to 1700 before proceeding on course. **Rwy 16**, climb heading 159° to 2000 before proceeding on course. **Rwy 20L**, climb heading 150° to 3100 before proceeding on course. **Rwy 20R**, climb heading 150° to 3100 before proceeding on course, or for climb in visual conditions, cross Dekalb-Peachtree airport at or above 2300 before proceeding on course. **Rwy 27**, climb heading 268° to 1800 before proceeding on course. **Rwy 34**, for climb in visual conditions: cross Dekalb-Peachtree airport at or above 2300 MSL before proceeding on course

NOTE: **Rwy 2L**, terrain 1' from departure end of runway, 125' right of centerline, 978' MSL. Bush 74' from departure end of runway, 254' right of centerline, 57' AGL/1009' MSL. Trees beginning 240' from departure end of runway, left and right of centerline, up to 100' AGL 1115' MSL. Windssock, antenna, tower and building beginning 563' from departure end of runway, 153' left of centerline, up to 179' AGL/1177' MSL. **Rwy 2R**, trees beginning 62' from departure end of runway, left and right of centerline, up to 100' AGL/1142' MSL. Powerline 550' from departure end of runway, 499' right of centerline, 35' AGL/1031' MSL. **Rwy 9**, vehicles beginning 370' from departure end of runway, left and right of centerline, up to 15' AGL/994' MSL. Trees beginning 52' from departure end of runway, left and right of centerline, up to 100' AGL/1119' MSL. **Rwy 16**, trees beginning 225' from departure end of runway, left and right of centerline, up to 100' AGL/1084' MSL. Tower 11' from departure end of runway, 308' left of centerline, 29' AGL/1017' MSL. Windssock and sign beginning 2' from departure end of runway, 180' right of centerline, up to 44' AGL/1002' MSL. **Rwy 20L**, trees beginning 28' from departure end of runway, left and right of centerline, up to 100' AGL/1069' MSL. Pole, spire and sign beginning 255' from departure end of runway, 277' left of centerline up to 66' AGL/1028' MSL. **Rwy 20R**, trees beginning 25' from departure end of runway, left and right of centerline, up to 100' AGL/1069' MSL. Spire and pole beginning 1966' from departure end of runway, 94' right of centerline, up to 106' AGL/1071' MSL. Sign 1129' from departure end of runway, 778' left of centerline, 66' AGL/1028' MSL. **Rwy 27**, vehicles beginning 146' from departure end of runway, left and right of centerline, up to 15' AGL/1017' MSL. Trees beginning 150' from departure end of runway, left and right of centerline, up to 100' AGL/1107' MSL. **Rwy 34**, vehicles beginning 873' from departure end of runway, left and right of centerline, 15' AGL/1036' MSL. Trees beginning 145' from departure end of runway, left and right of centerline, up to 100' AGL/1098' MSL. Sign, building and rod on building beginning 1287' from departure end of runway, 153' right of centerline, up to 57' AGL/1075' MSL. Poles beginning 956' from departure end of runway, 282' right of centerline up to 61' AGL/1071' MSL. Poles beginning 121' from departure end of runway, 284' left of centerline, 39' AGL/1090' MSL. Hangers beginning 341' from departure end of runway, left and right of centerline, 24' AGL/1022' MSL.

31 MAY 2012 to 28 JUN 2012

31 MAY 2012 to 28 JUN 2012

ATLANTA, GA (CON'T)

FULTON COUNTY AIRPORT-BROWN FIELD

TAKE-OFF MINIMUMS: **Rwys 8, 9, 14**, 400-1. **Rwy 32**, 700-3 or std. with a min. climb of 290' per NM to 1600.

Rwys 26, 27, 500-1 or std. with a min. climb of 260' per NM to 1300.

DEPARTURE PROCEDURE: **Rwys 8, 9**, left turn, climb via heading 060° to 3100 before proceeding on course.

Rwy 14, climb runway heading to 1400 at min. climb of 220' per NM before proceeding on course.

Rwys 26, 27, 32, climb runway heading to 1400 before turning.

Departure procedure not required for aircraft with minimum climb of 300' per NM to 3100 or when weather is 1300-2 or better.

HARTSFIELD-JACKSON ATLANTA INTL (ATL)

AMDT 4A 11321 (FAA)

TAKE-OFF MINIMUMS: **Rwy 8R**, 300-1 or std. w/min. climb of 247' per NM to 1200, or alternatively with standard takeoff minimums and a normal 200' per NM climb gradient, takeoff must occur no later than 2000' prior to DER. **Rwy 9L**, 300-1½ or std. w/min. climb of 234' per NM to 1200, or alternatively with standard takeoff minimums and a normal 200' per NM climb gradient, takeoff must occur no later than 1800' prior to DER.

DEPARTURE PROCEDURE: **Rwy 8R**, climb heading 092° to 1500 before turning right. **Rwy 9L**, climb heading 092° to 1400 before turning left.

NOTE: **Rwy 8L**, trees beginning 930' from DER, 533' left of centerline, up to 59' AGL/1048' MSL. **Rwy 8R**, antenna on tower 4815' from DER, 1636' left of centerline, 151' AGL/1148' MSL. **Rwy 9L**, bushes beginning 100' from DER, 452' left of centerline, up to 2' AGL/981' MSL. Rod on pole 5305' from DER, 1731' left of centerline, 128' AGL/1137' MSL.

Rwy 10, antenna 4240' from DER, 407' left of centerline, 217' AGL/1134' MSL. Poles beginning 58' from DER, 519' right of centerline, up to 37' AGL/1016' MSL. **Rwy 26L**, rod on building and trees beginning 1248' from DER, 185' left of centerline, up to 48' AGL/1097' MSL. **Rwy 26R**, trees beginning 1988' from DER, 486' left of centerline, up to 73' AGL/1112' MSL. Antennas and trees beginning 1797' from DER, 109' right of centerline, up to 63' AGL/1128' MSL.

Rwy 27L, hopper 3935' from DER, 1255' right of centerline, 102' AGL/1131' MSL. **Rwy 27R**, pole, elevator, hoppers and trees beginning 1012' from DER, 201' right of centerline, up to 108' AGL/1137' MSL. **Rwy 28**, catenary 2001' from DER, 770' left of centerline, 52' AGL/1051' MSL.

ATLANTA, GA (CONT.)

NEWMAN-COWETA COUNTY (CCO)

AMDT 3B 11069 (FAA)

DEPARTURE PROCEDURE: **Rwy 32**, climbing left turn via heading 270° to 2100 before proceeding on course.

NOTE: **Rwy 14**, trees beginning 832' from DER, 346' left of centerline, up to 100' AGL/999' MSL. Trees 253' from DER, 443' right of centerline, up to 100' AGL/944' MSL.

Rwy 32, trees beginning 975' from DER, 21' right of centerline, up to 100' AGL/1051' MSL. Utility tower 1063' from DER, 320' right of centerline, 65' AGL/997' MSL. Fence 1286' from DER, 550' right of centerline, 25' AGL/1005' MSL. Trees beginning 167' from DER, 1' left of centerline, up to 100' AGL/1048' MSL. Utility towers beginning 135' from DER, 36' left of centerline, up to 65' AGL/1032' MSL. Tree 1684' from DER, 784' right of centerline 100' AGL/1119' MSL.

PAULDING-NORTHWEST ATLANTA (PUJ)

AMDT 1 11125 (FAA)

NOTE: **Rwy 31**, trees beginning 213' from DER, left and right of centerline, up to 100' AGL/1399' MSL. Trees beginning 4202' from DER, left and right of centerline, up to 100' AGL/1419' MSL.

ATMORE, AL

ATMORE MUNI (0R1)

AMDT 1 10322 (FAA)

NOTE: **Rwy 18**, trees beginning 108' from DER, 134' left and right of centerline, up to 100' AGL/380' MSL. Trees beginning 168' from DER, 512' right of centerline, up to 100' AGL/379' MSL. Vehicles on roadway beginning 203' from DER, on centerline, up to 15' AGL/294' MSL. Transmission line beginning 1330' from DER, left and right of centerline, up to 70' AGL/344' MSL. **Rwy 36**, vehicles on roadway beginning 182' from DER, left and right of centerline, up to 15' AGL/307' MSL. Trains on tracks beginning 922' from DER, left and right of centerline, up to 23' AGL/313' MSL. Trees beginning 443' from DER, 314' right of centerline, up to 100' AGL/390' MSL. Trees beginning 489' from DER, 321' left of centerline, up to 100' AGL/390' MSL.

AUBURN, AL

AUBURN UNIVERSITY RGNL

NOTE: **Rwy 18**, multiple trees beginning 1128' from departure end of runway, 559' right of centerline, up to 73' AGL/793' MSL, tree 1127' from departure end of runway, 464' left of centerline, 59' AGL/769' MSL. **Rwy 29**, multiple trees beginning 202' from departure end of runway, 51' left of centerline, up to 81' AGL/860' MSL. Multiple trees beginning 231' from departure end of runway, 9' right of centerline, up to 82' AGL/841' MSL. **Rwy 36**, multiple trees beginning 223' from departure end of runway, 21' left of centerline, up to 88' AGL/848' MSL. Multiple trees beginning 87' from departure end of runway, 44' right of centerline, up to 106' AGL/865' MSL.

31 MAY 2012 to 28 JUN 2012

31 MAY 2012 to 28 JUN 2012

12152

AUGUSTA, GA

AUGUSTA RGNL AT BUSH FIELD (AGS)
AMDT 13 09071 (FAA)

TAKE-OFF MINIMUMS: **Rwy 8**, std. w/ min. climb of 392' per NM to 2600 or 1700 - 2½ for climb in visual conditions. **Rwy 26**, 300-1¼ or std. w/ min. climb of 323' per NM to 500.

DEPARTURE PROCEDURE: **Rwy 8**, for climb in visual conditions: cross Augusta Regional at Bush Field airport at or above 1700 MSL before proceeding on course. **Rwy 17**, climb heading 172° to 900 before turning east. **Rwy 26**, climb heading 262° to 1000 before turning east. **Rwy 35**, climb heading 352° to 1300 before turning east.

NOTE: **Rwy 8**, numerous trees beginning 560' from DER, 67' left of centerline, up to 80' AGL/209' MSL. Numerous trees beginning 821' from DER, 124' right of centerline, up to 80' AGL/209' MSL. **Rwy 17**, numerous trees beginning 746' from DER, 616' left of centerline, up to 72' AGL/203' MSL. Numerous trees beginning 1700' from DER, 759' right of centerline, up to 82' AGL/216' MSL. **Rwy 26**, numerous trees beginning 993' from DER, 295' left of centerline, up to 85' AGL/219' MSL. Light pole and numerous trees beginning 1016' from DER, 286' right of centerline, up to 71' AGL/205' MSL. Tree 4983' from DER, 1396' left of centerline, 100' AGL/329' MSL. Tree 1.4 NM from DER, 169' right of centerline, 112' AGL/361' MSL.

AUGUSTA, GA (CONT)

DANIEL FIELD (DNL)
AMDT 5 08045 (FAA)

TAKE-OFF MINIMUMS: **Rwy 5**, 300-1 or std. w/ min climb of 385' per NM to 800. **Rwy 23**, 600-3 or std. w/ min. climb of 350' per NM to 1300.

DEPARTURE PROCEDURE: **Rwy 23**, climb heading 214° to 1300 before turning west. **Rwy 29**, climb heading 288° to 1000 before turning south.

NOTES: **Rwy 5**, rising terrain beginning 143' from departure end of runway, 260' right of centerline, 430' MSL. Building 315' from departure end of runway, 350' right of centerline, 50' AGL/479' MSL. Numerous trees beginning 992' from departure end of runway, 12' right of centerline, up to 100' AGL/569' MSL. Road and vehicle 348' from departure end of runway, on centerline, 17' AGL/446' MSL. Terrain beginning 178' from departure end of runway, 134' left of centerline up to 466' MSL. Building 392' from departure end of runway, 207' left of centerline, 50' AGL/489' MSL. Numerous trees beginning 636' from departure end of runway, 12' left of centerline, up to 100' AGL/579' MSL. **Rwy 11**, hangar 7' from departure end of runway, 493' right of centerline, 50' AGL/479' MSL. road and vehicle 253' from departure end of runway, on centerline, 17' AGL/446' MSL. Numerous trees beginning 449' from departure end of runway, 138' right of centerline, up to 100' AGL/529' MSL. Building 2232' from departure end of runway, 480' right of centerline, 106' AGL/509' MSL. Terrain beginning 80' from departure end of runway, 146' left of centerline, up to 430' MSL. Building 251' from departure end of runway, 531' left of centerline, 50' AGL/479' MSL. Building 483' from departure end of runway, 286' left of centerline, 50' AGL/479' MSL. Numerous trees beginning 564' from departure end of runway, 145' left of centerline, up to 100' AGL/529' MSL. **Rwy 23**, tower 2.4 NM from departure end of runway, 3437' right of centerline, 600' AGL/965' MSL. Numerous trees beginning 164' from departure end of runway, 10' left of centerline, up to 100' AGL/459' MSL. Numerous trees beginning 5' from departure end of runway, 113' right of centerline, up to 100' AGL/459' MSL. Building 279' from departure end of runway, 114' right of centerline, 50' AGL/409' MSL. **Rwy 29**, numerous trees beginning 7' from departure end of runway, 117' left of centerline up to 100' AGL/539' MSL. Building 311' from departure end of runway, 140' left of centerline, 50' AGL/459' MSL. Road and vehicle 4' from departure end of runway, 229' right of centerline, 17' AGL/446' MSL. Numerous trees beginning 31' from departure end of runway, 3' right of centerline, up to 100' AGL/539' MSL. Building 1480' from departure end of runway, 793' right of centerline, 50' AGL/489' MSL.

31 MAY 2012 to 28 JUN 2012

31 MAY 2012 to 28 JUN 2012

12152

TAKE-OFF MINIMUMS AND (OBSTACLE) DEPARTURE PROCEDURES

12152

BAINBRIDGE, GA

DECATUR COUNTY INDUSTRIAL AIR PARK
(BGE)
ORIG 09211 (FAA)

NOTE: **Rwy 14**, trees beginning 938' from DER, 238' right of centerline, up to 100' AGL/249' MSL. **Rwy 27**, trees beginning 1050' from DER, 52' right of centerline, up to 100' AGL/196' MSL. Tree 1527' from DER, 63' left of centerline, 100' AGL/192' MSL.

BAXLEY, GA

BAXLEY MUNI (BHC)
AMDT1 12152 (FAA)

DEPARTURE PROCEDURE: **Rwy 26**, climb heading 261° to 800 before turning north.

NOTE: **Rwy 8**, trees beginning 13' from DER, 149' left of centerline, up to 70' AGL/285' MSL. Trees beginning 749' from DER, 465' right of centerline, up to 97' AGL/278' MSL. Poles beginning 764' from DER, 392' right of centerline, up to 24' AGL/234' MSL. **Rwy 26**, trees beginning 41' from DER, 287' left of centerline, up to 88' AGL/295' MSL. Trees beginning 227' from DER, 30' right of centerline, up to 80' AGL/285' MSL.

BAY MINETTE, AL

BAY MINETTE MUNI

NOTE: **Rwy 8**, brush 115' from departure end of runway, 80' left of centerline, 5' AGL/253' MSL. **Rwy 26**, trees 1190' from departure end of runway, on centerline, 35' AGL/242' MSL. Brush 135' from departure end of runway, 91' left of centerline, 5' AGL/212' MSL. Tree 5494' from departure end of runway, 84' right of centerline, 100' AGL/348' MSL.

BESSEMER, AL

BESSEMER

NOTE: **Rwy 5**, numerous trees beginning 147' from departure end of runway, 33' left of centerline, up to 100' AGL/859' MSL. Numerous trees beginning 36' from departure end of runway, 8' right of centerline, up to 100' AGL/769' MSL. **Rwy 23**, terrain beginning 33' from departure end of runway, 102' left of centerline, up to 709' MSL. Tree 74' from departure end of runway, 163' right of centerline, 50' AGL/714' MSL. Tree 175' from departure end of runway, 439' left of centerline, 11' AGL/710' MSL.

BIRMINGHAM, AL

BIRMINGHAM-SHUTTLESWORTH INTL (BHM)
AMDT 6 12040 (FAA)

TAKE-OFF MINIMUMS: **Rwy 6**, 300-1¼ w/min. climb of 282' per NM to 1800 or std. w/min. climb of 421' per NM to 1800. **Rwy 18**, 600-3 w/min. climb of 221' per NM to 1500 or std. w/min. climb of 450' per NM to 1500. **Rwy 36**, 300-1½ or std. w/min. climb of 598' per NM to 1000.

DEPARTURE PROCEDURE: **Rwy 6**, climb heading 058° to 1500 before proceeding on course. **Rwy 18**, climb heading 183° to 2300 before proceeding on course. **Rwy 24**, climb heading 253° to 2200 before proceeding on course. **Rwy 36**, climb heading 003° to 1400 before proceeding on course.

NOTE: **Rwy 6**, terrain and trees beginning 1455' from DER, 1' right of centerline, up to 88' AGL/767' MSL. Trees 4106' from DER, 1291' left of centerline, up to 51' AGL/870' MSL. Trees 1.1 NM from DER, 1375' left of centerline, up to 58' AGL/897' MSL. Trees 1.3 NM from DER, 1900' left of centerline, up to 40' AGL/879' MSL. **Rwy 18**, tower, poles, and trees beginning 772' from DER, 174' left of centerline, up to 99' AGL/749' MSL. Terrain, poles, and trees beginning 537' from DER, 10' right of centerline, up to 51' AGL/690' MSL. Tower 1.7 NM from DER, 1695' left of centerline, 150' AGL/1219' MSL. Building 2.5 NM from DER, 2196' right of centerline, 210' AGL/1070' MSL. **Rwy 24**, sign and trees beginning 990' from DER, 563' left of centerline, up to 52' AGL/671' MSL. **Rwy 36**, terrain beginning 161' from DER, 232' left of centerline, 715' MSL. Fence, vehicles on road, pole, and trees beginning 129' from DER, 1' right of centerline, up to 72' AGL/791' MSL. Pole 2342' from DER, 326' left of centerline, 40' AGL/819' MSL. Trees 4876' from DER, 522' left of centerline, up to 70' AGL/889' MSL. Trees 1.3 NM from DER, 1554' right of centerline, up to 62' AGL/881' MSL.

BLAKELY, GA

EARLY COUNTY (BIJ)
ORIG 08045 (FAA)

NOTE: **Rwy 5**, trees beginning 12' from departure end of runway, 214' left of centerline, up to 100' AGL/319' MSL. Trees beginning 17' from departure end of runway, 122' right of centerline, up to 100' AGL/329' MSL. Vehicles on roadway, beginning 416' from departure end of runway, left and right of centerline, up to 17' AGL/236' MSL. Trains on railroad tracks beginning 883' from departure end of runway, 684' left of centerline, up to 23' AGL/242' MSL. **Rwy 23**, trees beginning at departure end of runway, 2924' right of centerline, up to 100' AGL/319' MSL. Trees beginning 417' from departure end of runway, left and right of centerline, up to 100' AGL/319' MSL. Vehicles on roadway, 537' from departure end of runway, 628' right of centerline, up to 17' AGL/236' MSL. Buildings 1418' from departure end of runway, 203' left of centerline, up to 50' AGL/269' MSL.

31 MAY 2012 to 28 JUN 2012

31 MAY 2012 to 28 JUN 2012

12152

TAKE-OFF MINIMUMS AND (OBSTACLE) DEPARTURE PROCEDURES

TAKE-OFF MINIMUMS AND (OBSTACLE) DEPARTURE PROCEDURES

12152

BREWTON, AL

BREWTON MUNI (12J)
AMDT 2 10070 (FAA)

TAKE-OFF MINIMUMS: **Rwys 18, 36**, NA-Closed Indef.
NOTE: **Rwy 6**, trees 141' from DER, 33' left of centerline, 25' AGL/121' MSL. **Rwy 12**, trees 199' from DER, 495' right of centerline, 57' AGL/156' MSL. Vehicle on road, 1906' from DER, 456' right of centerline, 15' AGL/156' MSL. **Rwy 24**, trees 380' from DER, 135' left of centerline, 25' AGL, 127' MSL.
Rwy 30, trees 92' from DER, 391' right of centerline, 46' AGL/126' MSL. Trees, 2654' from DER, 1129' left of centerline, 91' AGL/161' MSL.

BRUNSWICK, GA

BRUNSWICK GOLDEN ISLES

NOTE: **Rwy 7**, tree 1380' from departure end of runway, 840' right of centerline, 38' AGL/57' MSL. **Rwy 25**, multiple trees beginning 1259' from departure end of runway, 688' right of centerline, up to 50' AGL/74' MSL.

MALCOLM-MCKINNON (SSI)
AMDT 3 12040 (FAA)

NOTE: **Rwy 4**, trees beginning 11' from DER, left/right of centerline, up to 100' AGL/116' MSL. Buildings beginning 54' from DER, left/right of centerline, up to 39' AGL/55' MSL. Poles beginning 57' from DER, left/right of centerline, up to 51' AGL/67' MSL. **Rwy 16**, trees beginning 62' from DER, left/right of centerline, up to 107' AGL/119' MSL. Poles beginning 944' from DER, left/right of centerline, up to 44' AGL/56' MSL. Towers beginning 2586' from DER, left/right of centerline, up to 109' AGL/121' MSL. **Rwy 22**, trees beginning 16' from DER, left/right of centerline, up to 100' AGL/111' MSL. Poles beginning 186' from DER, 251' right of centerline, up to 110' AGL/122' MSL. **Rwy 34**, trees beginning 87' from DER, left/right of centerline, up to 97' AGL/114' MSL. Poles beginning 802' from DER, left/right of centerline, up to 50' AGL/67' MSL. Buildings beginning 1036' from DER, left/right of centerline, up to 34' AGL/51' MSL.

BUTLER, AL

BUTLER-CHOCTAW COUNTY

NOTE: **Rwy 11**, multiple trees beginning 511' from departure end of runway, 3' right of centerline, up to 100' AGL/229' MSL. Multiple trees beginning 560' from departure end of runway, 191' left of centerline, up to 100' AGL/229' MSL. **Rwy 29**, multiple trees beginning 831' from departure end of runway, 361' right of centerline, up to 100' AGL/209' MSL. Multiple trees beginning 387' from departure end of runway, 333' left of centerline, up to 100' AGL/219' MSL.

BUTLER, GA

BUTLER MUNI

NOTE: **Rwy 18**, numerous trees beginning 268' from departure end of runway, 500' left of centerline, up to 100' AGL/759' MSL. Pylon 58' from departure end of runway, 449' left of centerline, 59' AGL/688' MSL. Numerous trees beginning 746' from departure end of runway, 420' right of centerline, up to 100' AGL/759' MSL.

CAIRNS AAF (KOZR)

FORT RUCKER, AL ORIG, 09127

Rwy 6, 24, 18, 36, and Helipads C, G, A, D1, D2: Standard. All other helipads, NA.

DEPARTURE PROCEDURE: **Helipad C:** Climb heading 178° to 1000 before proceeding on course.

Helipad G: Climb heading 178° to 1000 before proceeding on course.

TAKE-OFF OBSTACLES: **Rwy 6:** Trees 483' from DER, 616' left of centerline 75' AGL/344' MSL. Trees 738' from DER, 641' right of centerline, 75' AGL/344' MSL. Trees 1,777' from DER, 825' left of centerline, 75' AGL/354' MSL. **Rwy 24:** Trees 266' from DER, 538' right of centerline, 75' AGL/354' MSL. Trees 2,501' from DER, 914' right of centerline, 75' AGL/375' MSL. Reflector 149' from DER, 149' right of centerline, 13' AGL/309' MSL. Reflector 149' from DER, 150' left of centerline, 13' AGL/309' MSL. Telephone poles beginning 1,068' from DER, 303' left of centerline, up to 23' AGL/332' MSL. **Rwy 18:** Trees 525' from DER, 578' left of centerline, 75' AGL/364' MSL. **Rwy 36:** Trees 1,199' from DER, 783' right of centerline, 75' AGL/384' MSL. Trees 3,149' from DER, 1,104' right of centerline, 75' AGL/394' MSL.

CAIRO, GA

CAIRO-GRADY COUNTY (70J)

AMDT 3 10266 (FAA)

NOTE: **Rwy 13**, trees beginning 36' from DER, 240' left of centerline, up to 35' AGL/259' MSL. Trees beginning 203' from DER, 37' right of centerline, up to 35' AGL/273' MSL. Trees beginning 1037' from DER, 67' right of centerline, up to 35' AGL/285' MSL. Trees beginning 1295' from DER, 1' left of centerline, up to 35' AGL/275' MSL. **Rwy 31**, truck 120' from DER, 217' left of centerline, 15' AGL/274' MSL. Trees beginning 277' from DER, 355' right of centerline, up to 35' AGL/306' MSL. Trees beginning 1188' from DER, 4' right of centerline, up to 35' AGL/335' MSL. Trees beginning 1777' from DER, 74' left of centerline, up to 35' AGL/334' MSL.

CALHOUN, GA

TOM B. DAVID FIELD

TAKE-OFF MINIMUMS: **Rwy 17**, 500-3 or std. with a min. climb of 251' per NM to 1300. **Rwy 35**, 500-2½ or std. with a min. climb of 264' per NM to 1300.

DEPARTURE PROCEDURE: **Rwy 17**, climb via heading 170° to 2000 before turning. **Rwy 35**, climb via heading 350° to 2000 before turning.

NOTE: **Rwy 17**, tree 12,771' from departure end of runway, 6143' left of centerline, 100' AGL/1119' MSL. **Rwy 35**, two towers 12,928' from departure end of runway, 587' right of centerline, 100' AGL/1008' MSL.

31 MAY 2012 to 28 JUN 2012

31 MAY 2012 to 28 JUN 2012

12152

TAKE-OFF MINIMUMS AND (OBSTACLE) DEPARTURE PROCEDURES

TAKE-OFF MINIMUMS AND (OBSTACLE) DEPARTURE PROCEDURES

12152

CAMILLA, GA

CAMILLA-MITCHELL COUNTY (CXU)

AMDT 1 08213 (FAA)

DEPARTURE PROCEDURE: **Rwy 8**, climb heading 081° to 1100 before turning right.

NOTE: **Rwy 8**, trees beginning 44' from departure end of runway, 470' left of centerline, up to 100' AGL/284' MSL. Trees beginning 876' from departure end of runway, 404' right of centerline, up to 100' AGL/274' MSL. **Rwy 26**, vehicle on road beginning 53' from departure end of runway, left and right of centerline, up to 15' AGL/186' MSL. Trees beginning 218' from departure end of runway, 413' left of centerline, up to 100' AGL/269' MSL. Trees beginning 1758' from departure end of runway, 548' right of centerline, up to 100' AGL/269' MSL.

CANON, GA

FRANKLIN COUNTY (18A)

ORIG 08269 (FAA)

TAKE-OFF MINIMUMS: **Rwy 8**, 400-2¼ or std. w/min. climb of 217' per NM to 1400. Alternatively, with standard takeoff minimums and a normal 200'/NM climb gradient, takeoff must occur no later than 1800' prior to departure end of runway.

NOTE: **Rwy 8**, trees beginning 142' from departure end of runway, 9' right of centerline, up to 110' AGL/1006' MSL. Trees beginning 469' from departure end of runway, 43' left of centerline, up to 114' AGL/1004' MSL. **Rwy 26**, trees beginning 134' from departure end of runway, 301' right of centerline, up to 57' AGL/885' MSL. Trees beginning 514' from departure end of runway, 26' left of centerline, up to 73' AGL/902' MSL.

CANTON, GA

CHEROKEE COUNTY (CNI)

AMDT 2 11237 (FAA)

TAKE-OFF MINIMUMS: **Rwy 5**, std. w/min. climb of 300' per NM to 4500, or 1600-3 for climb in visual conditions. **Rwy 23**, 300-1 or std. w/min. climb of 236' per NM to 1500, or alternately, with standard takeoff minimums and a normal 200' per NM climb gradient, takeoff must occur no later than 1800' prior to DER.

DEPARTURE PROCEDURE: **Rwy 5**, for climb in visual conditions: cross Cherokee County Airport at or above 2700 MSL before proceeding on course.

Rwy 23, climb on heading 227° to 2500 before proceeding on course.

NOTE: **Rwy 5**, trees beginning 196' from DER, 45' left of centerline, up to 100' AGL/1299' MSL. Trees beginning 215' from DER, 37' right of centerline, up to 100' AGL/1339' MSL. **Rwy 23**, pylon and trees beginning 142' from DER, 363' left of centerline, up to 51' AGL/1211' MSL. Trees beginning 164' from DER, 335' right of centerline, up to 100' AGL/1359' MSL.

CARROLLTON, GA

WEST GEORGIA RGNL-O V GRAY FIELD (CTJ)

ORIG 09127 (FAA)

TAKE-OFF MINIMUMS: **Rwy 35**, 300-1 or std. w/min. climb of 276' per NM to 1400.

DEPARTURE PROCEDURE: **Rwy 35**, climb heading 348° to 1800 before turning east.

NOTE: **Rwy 17**, trees beginning 261' from DER, 433' right of centerline, up to 100' AGL/1219' MSL. Trees beginning 301' from DER, 449' left of centerline, up to 100' AGL/1199' MSL. **Rwy 35**, trees beginning 123' from DER, 3' left of centerline, up to 100' AGL/1283' MSL. Trees beginning 1189' from DER, 127' right of centerline, up to 100' AGL/1283' MSL. Vehicle on road 2489' from DER, 477' left of centerline, 17' AGL/1235' MSL.

CARTERSVILLE, GA

CARTERSVILLE

TAKE-OFF MINIMUMS: **Rwy 1**, 500-2¼ or std. w/min. climb of 361' per NM to 1300. **Rwy 19**, 400-2½ or std. w/min. climb of 600' per NM to 1300.

DEPARTURE PROCEDURE: **Rwy 1**, climb heading 007° to 2300 before proceeding on course. **Rwy 19**, climb heading 187° to 1300 before turning westbound.

NOTE: **Rwy 1**, trees beginning 24' from departure end of runway, 236' left of centerline, up to 74' AGL/798' MSL. Brush 199' from departure end of runway, 160' right of centerline, 26' AGL/756' MSL. Tree 1253' from departure end of runway, 641' right of centerline, 69' AGL/808' MSL. Trees beginning 8789' from departure end of runway, 2511' right of centerline, up to 100' AGL/1199' MSL. **Rwy 19**, terrain 194' from departure end of runway, 466' left of centerline, 0' AGL/775' MSL. Trees beginning 2357' from departure end of runway, 44' left of centerline, up to 80' AGL/1079' MSL. Trees beginning 2312' from departure end of runway, 119' right of centerline, up to 80' AGL/1019' MSL.

CEDARTOWN, GA

POLK COUNTY AIRPORT - CORNELIUS

MOORE FIELD (4A4)

AMDT 1 11237 (FAA)

NOTE: **Rwy 10**, trees beginning 9' from DER, 283' left of centerline, up to 100' AGL/1029' MSL. Trees beginning 25' from DER, 391' right of centerline, up to 100' AGL/1017' MSL. **Rwy 28**, trees beginning 18' from DER, 466' left of centerline, up to 100' AGL/1042' MSL. Trees beginning 96' from DER, 282' right of centerline, up to 100' AGL/1025' MSL.

CENTRE, AL

CENTRE-PIEDMONT CHEROKEE COUNTY

RGNL (PYP)

ORIG 08101 (FAA)

DEPARTURE PROCEDURE: **Rwy 7**, Climb heading 067° to 1400 before turning South. **Rwy 25**, Climb heading 247° to 2500 before turning South.

NOTE: **Rwy 7**, multiple trees beginning 1481' from departure end of runway, 456' right of centerline up to 100' AGL/709' MSL. Multiple trees beginning 2273' from departure end of runway, 434' left of centerline up to 100' AGL/689' MSL. **Rwy 25**, multiple trees beginning 2780' from departure end of runway, 245' right of centerline up to 100' AGL/689' MSL. Tree 3093' from departure end of runway, 516' left of centerline 100' AGL/679' MSL.

31 MAY 2012 to 28 JUN 2012

31 MAY 2012 to 28 JUN 2012

12152

TAKE-OFF MINIMUMS AND (OBSTACLE) DEPARTURE PROCEDURES

TAKE-OFF MINIMUMS AND (OBSTACLE) DEPARTURE PROCEDURES

12152

CENTREVILLE, AL

BIBB COUNTY (0A8)

ORIG 07354 (FAA)

TAKE-OFF MINIMUMS: **Rwy 10**, 300-1¼ or std. w/min. climb of 330' per NM to 600. **Rwy 28**, 300-2 or std. w/min. climb of 300' per NM to 600.

DEPARTURE PROCEDURE: **Rwy 10**, climb heading 097° to 1000 before turning left.

NOTE: **Rwy 10**, brush 430' from departure end of runway, 42' right of centerline, 48' AGL/268' MSL. Trees beginning 4800' from departure end of runway, 1397' left of centerline, up to 100' AGL/479' MSL. **Rwy 28**, trees beginning at departure end of runway, 239' left of centerline, up to 100' AGL/339' MSL. Trees beginning at departure end of runway, 309' right of centerline, up to 100' AGL/499' MSL.

CLANTON, AL

CHILTON COUNTY (02A)

ORIG-A 10266 (FAA)

TAKE-OFF MINIMUMS: **Rwy 8**, 300-1. **Rwy 26**, 200-1 or std. with a min. climb of 250' per NM to 1000.

DEPARTURE PROCEDURE: **Rwy 8**, climb heading 077° to 1000 before turning on course. **Rwy 26**, climb heading 257° to 1100 before turning on course.

NOTE: **Rwy 26**, tank 4836' from DER, 1144' left of centerline, 90' AGL/710' MSL.

CLAXTON, GA

CLAXTON-EVANS COUNTY (CWV)

ORIG 08269 (FAA)

NOTE: **Rwy 9**, trees beginning at departure end of runway, left and right of centerline, up to 100' AGL/199' MSL. **Rwy 27**, trees beginning at departure end of runway, left and right of centerline, up to 100' AGL/229' MSL. Vehicles on highway beginning 236' from departure end of runway, left and right of centerline, up to 17' AGL/136' MSL.

CLAYTON, AL

CLAYTON MUNI

TAKE-OFF MINIMUMS: **Rwy 9**, 400-1 or std. with a min. climb of 350' per NM to 1000. **Rwy 27**, 400-1 or std. with a min. climb of 300' per NM to 1000.

DEPARTURE PROCEDURE: **Rwys 9, 27**, climb runway heading to 1000 before turning.

COCHRAN, GA

COCHRAN (48A)

AMDT 2 09295 (FAA)

TAKE-OFF MINIMUMS: **Rwy 23**, 300-1¼ or std. w/min. climb of 316' per NM to 700.

DEPARTURE PROCEDURE: **Rwy 5**, climb heading 049° to 1700 before turning left. **Rwy 11**, climb heading 107° to 1200 before turning left. **Rwy 23**, climb heading 229° to 900 before proceeding on course. **Rwy 29**, climb heading 287° to 900 before turning right.

NOTE: **Rwy 5**, trees beginning 10' from DER, left and right of centerline, up to 100' AGL/419' MSL. **Rwy 11**, mobile sprinklers, 166' from DER, 331' right of centerline, up to 24' AGL/345' MSL. Trees beginning 979' from DER, 753' left of centerline, up to 100' AGL/409' MSL. Trees beginning 1118' from DER, 678' right of centerline, up to 100' AGL/395' MSL. **Rwy 23**, road beginning 196' from DER, 541' left of centerline, 15' AGL/344' MSL. Trees beginning 746' from DER, 302' left of centerline, up to 100' AGL/499' MSL. Trees beginning 1061' from DER, 473' right of centerline, up to 100' AGL/539' MSL. **Rwy 29**, ground and trees beginning 42' from DER, 480' right of centerline, up to 100' AGL/464' MSL. Trees beginning 212' from DER, 367' left of centerline, up to 100' AGL/442' MSL.

COLUMBUS, GA

COLUMBUS METROPOLITAN (CSG)

AMDT 7 10322 (FAA)

TAKE-OFF MINIMUMS: **Rwy 13**, std. w/min. climb of 205' per NM to 1200 or alternatively, with standard take-off minimums and a normal 200' per NM climb gradient, take-off must occur no later than 1200' prior to DER or 1700-2½' for climb in visual conditions. **Rwy 24**, std. with a min. climb of 225' per NM to 1800 or 1700-2½' for climb in visual conditions. **Rwy 31**, 300-2 or std. w/min. climb of 404' per NM to 700.

DEPARTURE PROCEDURE: **Rwy 6**, climb heading 056° to 1400 before turning south. **Rwy 13**, climb heading 070° to 2100 before turning south or for climb in visual conditions cross Columbus Metropolitan airport at or above 1900 before proceeding on course. **Rwy 24**, climb heading 280° to 1900 before turning south or for climb in visual conditions cross Columbus Metropolitan airport at or above 1900 before proceeding on course. **Rwy 31**, climb heading 309° to 1400 before turning south.

NOTE: **Rwy 6**, vehicle on road, building and trees beginning 363' from DER, 6' left of centerline, up to 83' AGL/532' MSL. Trees beginning 748' from DER, 1' right of centerline, up to 51' AGL/501' MSL. **Rwy 13**, tower, flagpole, and trees beginning 396' from DER, 132' left of centerline, up to 475' AGL/989' MSL. Trees, bush, and electrical systems beginning 101' from DER, 55' right of centerline, up to 56' AGL/433' MSL. **Rwy 24**, trees beginning 894' from DER, 195' left of centerline, up to 44' AGL/465' MSL. Towers and trees beginning 2414' from DER, 298' right of centerline, up to 784' AGL/1404' MSL. **Rwy 31**, vehicle on road, bush, signs, poles, tower and trees beginning 319' from DER, 33' left of centerline, up to 183' AGL/598' MSL. Trees, antenna, and vehicle on road beginning 319' from DER, 146' right of centerline, up to 100' AGL/569' MSL.

31 MAY 2012 to 28 JUN 2012

31 MAY 2012 to 28 JUN 2012

12152

TAKE-OFF MINIMUMS AND (OBSTACLE) DEPARTURE PROCEDURES

TAKE-OFF MINIMUMS AND (OBSTACLE) DEPARTURE PROCEDURES

12152

CORDELE, GA

CRISP COUNTY-CORDELE

NOTE: **Rwy 5**, multiple trees beginning 120' from departure end of runway, 201' left of centerline, up to 100' AGL/391' MSL. Multiple trees beginning 364' from departure end of runway, 235' right of centerline, up to 100' AGL/412' MSL. **Rwy 10**, multiple trees beginning 21' from departure end of runway, 376' left of centerline, up to 100' AGL/409' MSL. Multiple trees beginning 627' from departure end of runway, 254' right of centerline, up to 100' AGL/426' MSL. Pole 822' from departure end of runway, 258' left of centerline, 21' AGL/343' MSL. Pole 1023' from departure end of runway, 335' left of centerline, 31' AGL/341' MSL. Vehicle on road 434' from departure end of runway, 405' right of centerline, 16' AGL/326' MSL. Vent on building 741' from departure end of runway, 339' right of centerline, 21' AGL/331' MSL. **Rwy 23**, multiple trees beginning 162' from departure end of runway, 248' left of centerline, up to 100' AGL/382' MSL. Multiple trees beginning 340' from departure end of runway, 342' right of centerline, up to 100' AGL/391' MSL. **Rwy 28**, multiple trees beginning 1235' from departure end of runway, 107' left of centerline, up to 100' AGL/388' MSL. Multiple trees beginning 101' from departure end of runway, 277' right of centerline, up to 100' AGL/400' MSL.

CORNELIA, GA

HABERSHAM COUNTY (AJR)

AMDT 4 11181 (FAA)

TAKE-OFF MINIMUMS: **Rwy 6**, 400-2¼ or std. w/min. climb of 445' per NM to 2000.

DEPARTURE PROCEDURE: **Rwy 6**, climb heading 062° to 2300 before proceeding on course. **Rwy 24**, climb heading 242° to 1900 before proceeding on course.

NOTE: **Rwy 6**, trees, buildings, and poles beginning 68' from DER, 5' left of centerline, up to 100' AGL/1558' MSL. Trees, towers, tanks, and buildings beginning 149' from DER, 55' right of centerline, up to 127' AGL/1779' MSL. **Rwy 24**, rising terrain, trees, buildings, and poles beginning 465' from DER, 6' left of centerline, up to 100' AGL/1539' MSL. Trees, buildings, and poles beginning 517' from DER, 36' right of centerline, up to 100' AGL/1519' MSL.

COURTLAND, AL

COURTLAND (9A4)

AMDT 1 10266 (FAA)

TAKE-OFF MINIMUMS: **Rwy 31**, 300-1½ or std. w/min. climb of 220' per NM to 900, or alternatively, with standard takeoff minimums and a normal 200'/NM climb gradient, takeoff must occur no later than 1600' prior to DER.

NOTE: **Rwy 31**, multiple trees beginning 174' from DER, 51' left of centerline, up to 100' AGL/759' MSL; multiple trees beginning 182' from DER, 19' right of centerline, up to 100' AGL/699' MSL.

COVINGTON, GA

COVINGTON MUNI (9A1)

AMDT 1 08325 (FAA)

TAKE-OFF MINIMUMS: **Rwy 28**, 200-1 or std. w/min. climb of 259' per NM to 1100.

NOTE: **Rwy 10**, terrain 18' from departure end of runway, 485' left of centerline, 817' MSL. Power pole 987' from departure end of runway, 107' right of centerline, 25' AGL/844' MSL. Trees beginning 1399' from departure end of runway, 300' left of centerline, up to 70' AGL/875' MSL. Tree 3902' from departure end of runway, 1535' right of centerline, 73' AGL/844' MSL. **Rwy 28**, trees beginning 1065' from departure end of runway, 34' left of centerline, up to 116' AGL/894' MSL. Trees beginning 1286' from departure end of runway, 435' right of centerline, up to 109' AGL/888' MSL. Water tower 5029' from departure end of runway, 1579' left of centerline, 162' AGL/961' MSL.

CULLMAN, AL

FOLSOM FIELD (3A1)

AMDT 2 11013 (FAA)

TAKE-OFF MINIMUMS: **Rwy 20**, 300-1¼ or std. w/min. climb of 585' per NM to 1300.

NOTE: **Rwy 2**, rising terrain beginning 40' from DER, 125' right of centerline, up to 980' MSL. Pole 1429' from DER, 665' right of centerline, 41' AGL/1006' MSL. Trees beginning 1672' from DER, left and right of centerline, up to 100' AGL/1119' MSL. **Rwy 20**, trees beginning at DER, 488' left of centerline, up to 99' AGL/1033' MSL. Trees beginning at DER, 534' right of centerline, up to 79' AGL/994' MSL. Building 436' from DER, 521' right of centerline, 20' AGL/953' MSL. Building 725' from DER, 556' right of centerline, 23' AGL/954' MSL. Trees beginning 1174' from DER, left and right of centerline, up to 125' AGL/1119' MSL. Water tower, 1.5 NM from DER, 960' left of centerline, 199' AGL/1184' MSL.

DALLAS, GA

PAULDING COUNTY RGNL (PUJ)

ORIG 09071 (FAA)

NOTE: **Rwy 13**, trees beginning 14' from DER, left and right of centerline, up to 100' AGL/1339' MSL. **Rwy 31**, trees beginning 490' from DER, left and right of centerline, up to 100' AGL/1399' MSL.

DALTON, GA

DALTON MUNI

DEPARTURE PROCEDURE: **Rwy 14**, climb on heading between 112° clockwise to 320° from departure end of runway, or minimum climb of 406' per NM to 5400 for all other courses. **Rwy 32**, climb on heading between 336° clockwise to 026° from departure end of runway, or minimum climb of 380' per NM to 5400 for all other courses.

NOTE: **Rwy 32**, numerous trees beginning 674' from departure end of runway, 515' right of centerline, up to 65' AGL/807' MSL. Scrub, building, and numerous trees beginning 5' from departure end of runway, 273' left of centerline, up to 72' AGL/834' MSL.

31 MAY 2012 to 28 JUN 2012

31 MAY 2012 to 28 JUN 2012

12152

TAKE-OFF MINIMUMS AND (OBSTACLE) DEPARTURE PROCEDURES



TAKE-OFF MINIMUMS AND (OBSTACLE) DEPARTURE PROCEDURES

12152

DAWSON, GA

DAWSON MUNI

TAKE-OFF MINIMUMS: **Rwy 31**, 300-1 or std. with a min. climb of 270' per NM to 600.

DECATUR, AL

PRYOR FIELD RGNL

NOTE: **Rwy 18**, multiple trees beginning 461' from departure end of runway, 179' right of centerline, up to 100' AGL/697' MSL. **Rwy 36**, tree 2582' from departure end of runway, 791' right of centerline, 100' AGL/685' MSL.

DEMOPOLIS, AL

DEMOPOLIS MUNI (DYA)

AMDT 1 09071 (FAA)

TAKE-OFF MINIMUMS: **Rwy 22**, 300-1 or std. w/min. climb of 370' per NM to 400.

DEPARTURE PROCEDURE: **Rwy 4**, trees beginning at DER, 196' left and 151' right of centerline up to 100' AGL/209' MSL. **Rwy 22**, trees beginning 295' from DER, 245' right of centerline up to 100' AGL/209' MSL. Stack 4902' from DER, 1717' right of centerline, 180' AGL/273' MSL. Water tank 5607' from DER, 1066' right of centerline, 148' AGL/243' MSL. Stack 4875' from DER, 2209' right of centerline, 295' AGL/391' MSL.

DOBBINS ARB (KMGE)

MARIETTA, GA AMDT 3, 09183

Rwy 29, 900-3*

*Or standard with minimum climb of 290/NM to 2300.

TAKE-OFF OBSTACLES: **Rwy 29**: 1255' MSL trees, 2300' to 5300' from departure end of rwy, extending 1600' left to 1700' right of centerline. 1130' MSL power pole, 2405' from departure end of rwy, 1066' left of centerline. 1138' MSL power pole, 2471' from departure end of rwy, 1095' left of centerline. 1140' MSL light pole, 2511' from departure end of rwy, 1162' right of centerline. 1143' MSL light pole, 2688' from departure end of rwy, 1139' right of centerline. 1165' MSL antenna, 3029' from departure end of rwy, 1034' left of centerline. 1165' MSL power pole, 3728' from departure end of rwy, 204' left of centerline. **Rwy 11**: 1020' MSL power pole, 1081' from departure end of rwy, 711' left of centerline. 1022' MSL tree, 1094' from departure end of rwy, 786' right of centerline. 1024' MSL power pole, 1163' from departure end of rwy, 785' left of centerline. 1023' MSL tree, 1170' from departure end of rwy, 752' right of centerline. 1025' MSL power pole, 1278' from departure end of rwy, 567' left of centerline. 1038' MSL trees, 1313' to 1457' from departure end of rwy, extending 657' to 706' right of centerline. 1048' MSL trees, 1614' from departure end of rwy, 925' left of centerline. 1097' MSL trees, 2800' to 2700' from departure end of rwy, extending 900' to 1200' right of centerline. 1088' MSL trees, 3300' from departure end of rwy, 295' right of centerline. 1141' MSL trees, 4150' to 4950' from departure end of rwy, extending 1050' to 1700' left of centerline. 1112' MSL power pole, 4469' from departure end of rwy, 1616' right of centerline. 1170' MSL tree, 5905' from departure end of rwy, 718' right of centerline. 1147' MSL tree, 6136' from departure end of rwy, 297' left of centerline.

DONALSONVILLE, GA

DONALSONVILLE MUNI (17J)

ORIG 09239 (FAA)

NOTE: **Rwy 18**, trees beginning 565' from DER, 107' right of centerline, up to 100' AGL/239' MSL. Vehicle on road, 608' from DER, on centerline, 15' AGL/154' MSL. **Rwy 36**, trees beginning 857' from DER, 326' right of centerline, up to 100' AGL/259' MSL. Trees beginning 1916' from DER, 974' left of centerline, up to 100' AGL/249' MSL.

DOTHAN, AL

DOTHAN RGNL (DHN)

ORIG-A 10350 (FAA)

NOTE: **Rwy 18**, trees beginning 2047' from DER, 54' right of centerline, up to 75' AGL/457' MSL. Pole 1434' from DER, 263' left of centerline, 48' AGL/418' MSL. **Rwy 32**, trees beginning 418' from DER, 575' left of centerline, up to 59' AGL/430' MSL. REILS beginning 43' from DER, 150' left and 137' right of centerline, up to 3' AGL/402' MSL. **Rwy 36**, trees beginning 628' from DER, 362' right of centerline, up to 45' AGL/424' MSL. Tree 339' from DER, 489' right of centerline, 55' AGL/434' MSL. Trees beginning 629' from DER, 122' right of centerline, up to 41' AGL/426' MSL. Trees beginning 549' from DER, 309' right of centerline, up to 63' AGL/453' MSL. Tree 1172' from DER, 58' left of centerline, 50' AGL/435' MSL. Trees beginning 3662' from DER, left and right of centerline, up to 88' AGL/493' MSL. Tree 1037' from DER, 676' right of centerline, 93' AGL/453' MSL.

DOUGLAS, GA

DOUGLAS MUNI (DQH)

AMDT 2 10322 (FAA)

TAKE-OFF MINIMUMS: **Rwy 4**, std. with a min. climb of 250' per NM to 1100 or 900-2½ for climb in visual conditions.

DEPARTURE PROCEDURE: **Rwy 4**, for climb in visual conditions cross Douglas Muni at or above 1100 before proceeding on course.

NOTE: **Rwy 4**, light poles beginning 408' from DER, 408' right of centerline, up to 100' AGL/291' MSL. Vehicle on road 20' from DER, 417' right of centerline, 15' AGL/271' MSL. Vehicle on road 20' from DER, 418' left of centerline, 15' AGL/271' MSL. **Rwy 22**, trees beginning 13' from DER, 400' right of centerline, up to 100' AGL/349' MSL.

DUBLIN, GA

W. H. "BUD" BARRON

NOTE: **Rwy 2**, trees beginning 2028' from departure end of runway, 810' left of centerline, up to 100' AGL/419' MSL. Interstate with vehicle 754' from departure end of runway, 88' right of centerline, 17' AGL/326' MSL. **Rwy 20**, trees beginning 2766' from departure end of runway, 839' right of centerline, up to 100' AGL/419' MSL. Road with vehicle 850' from departure end of runway, 91' left of centerline, 15' AGL/285' MSL. **Rwy 14**, trees beginning 1904' from departure end of runway, 167' right of centerline, up to 100' AGL/409' MSL. Trees beginning 1764' from departure end of runway, 67' left of centerline, up to 100' AGL/399' MSL. **Rwy 32**, trees beginning 1034' from departure end of runway, 193' right of centerline, up to 100' AGL/409' MSL. Trees beginning 1052' from departure end of runway, 220' left of centerline, up to 100' AGL/489' MSL.

31 MAY 2012 to 28 JUN 2012

31 MAY 2012 to 28 JUN 2012

12152



TAKE-OFF MINIMUMS AND (OBSTACLE) DEPARTURE PROCEDURES

TAKE-OFF MINIMUMS AND (OBSTACLE) DEPARTURE PROCEDURES

12152

EASTMAN, GA

HEART OF GEORGIA RGNL

NOTE: **Rwy 2**, trees 2272' from departure end of runway, 106' right of centerline, 100' AGL/429' MSL. Trees 2833' from departure end of runway, 505' right of centerline, 100' AGL/439' MSL. Trees 3332' from departure end of runway, 1130' right of centerline, 100' AGL/449' MSL.

Rwy 20, trees 802' from departure end of runway, 510' left of centerline, 100' AGL/379' MSL. Trees 1081' from departure end of runway, 126' right of centerline, 100' AGL/369' MSL.

ELBERTON, GA

ELBERT COUNTY-PATZ FIELD (27A)

ORIG 08325 (FAA)

NOTE: **Rwy 10**, tree 1100' from departure end of runway, 349' right of centerline, 68' AGL/648' MSL. Tree 1800' from departure end of runway, 68' left of centerline, 100' AGL/679' MSL. **Rwy 28**, tree 2699' from departure end of runway, 300' left of centerline, 100' AGL/719' MSL. Tree 200' from departure end of runway, 200' right of centerline, 100' AGL/650' MSL. Terrain beginning 66' from departure end of runway, 222' right of centerline, up to 627' MSL.

ENTERPRISE, AL

ENTERPRISE MUNI (EDN)

ORIG 09239 (FAA)

NOTE: **Rwy 5**, trees beginning 260' from DER, 50' left of centerline, up to 100' AGL/469' MSL. Tree 122' from DER, 177' right of centerline, 100' AGL/459' MSL.

Rwy 23, trees beginning 8' from DER, 203' right of centerline, up to 44' AGL/386' MSL. Trees beginning 10' from DER, 336' left of centerline, up to 28' AGL/370' MSL.

EUFAULA, AL

WEEDON FIELD (EUF)

AMDT 1 11237 (FAA)

NOTE: **Rwy 18**, trees beginning 661' from DER, 397' left of centerline, up to 100' AGL/324' MSL. Pole 181' from DER, 353' left of centerline, 65' AGL/304' MSL. Trees beginning 1207' from DER, 425' left of centerline, up to 100' AGL/360' MSL. Trees beginning 2011' from DER, 335' right of centerline, up to 100' AGL/369' MSL.

Rwy 36, trees beginning 1097' from DER, 618' left of centerline, up to 100' AGL/380' MSL. Trees beginning 16' from DER, 432' right of centerline, up to 100' AGL/376' MSL. Trees beginning 2746' from DER, 325' left of centerline, up to 100' AGL/356' MSL.

EVERGREEN, AL

MIDDLETON FIELD (GZH)

AMDT 1 08101 (FAA)

TAKE-OFF MINIMUMS: **Rwy 28**, 300-1¼ or std. w/min. climb of 260' per NM to 600.

DEPARTURE PROCEDURE: **Rwy 19**, climb heading 183° to 800 before turning left.

NOTE: **Rwy 1**, trees and terrain beginning 231' from departure end of runway, 116' right of centerline, up to 100' AGL/399' MSL. Trees and terrain beginning 183' from departure end of runway, 53' left of centerline, up to 100' AGL/399' MSL. **Rwy 10**, trees and terrain beginning 41' from departure end of runway, 21' right of centerline, up to 100' AGL/359' MSL. Trees and terrain beginning 197' from departure end of runway, 3' left of centerline, up to 100' AGL/369' MSL. **Rwy 19**, trees and terrain beginning 42' from departure end of runway, 6' right of centerline, up to 100' AGL/419' MSL. Trees and terrain beginning 18' from departure end of runway, 22' left of centerline, up to 100' AGL/469' MSL. **Rwy 28**, tree and terrain beginning 6' from departure end of runway, 126' right of centerline, up to 100' AGL/449' MSL. trees and terrain beginning 55' from departure end of runway, 58' left of centerline, up to 100' AGL/489' MSL.

FAIRHOPE, AL

H L SONNY CALLAHAN (CQF)

AMDT1 11125 (FAA)

NOTE: **Rwy 1**, trees beginning 824' from DER, left and right of centerline, up to 100' AGL/204' MSL.

FAYETTE, AL

RICHARD ARTHUR FIELD (M95)

AMDT 1 08045 (FAA)

NOTE: **Rwy 18**, 300-1¼ or std. w/min. climb of 349' per NM to 700. **Rwy 36**, 300-1 or std. w/min. climb of 306' per NM to 600.

DEPARTURE PROCEDURE: **Rwy 18**, climb heading 183° to 1200 before proceeding on course.



NOTE: **Rwy 18**, terrain beginning at departure end of runway, 142' right of centerline, up to 335' MSL. Multiple trees beginning 230' from departure end of runway, 28' right of centerline, up to 100' AGL/435' MSL. Multiple trees beginning 40' from departure end of runway, 102' left of centerline, up to 93' AGL/418' MSL. Tower 1.0 NM from departure end of runway, 1395' right of centerline, 224' AGL/549' MSL. **Rwy 36**, tower 39' from departure end of runway, 341' left of centerline, 40' AGL/399' MSL. Multiple trees beginning 390' from departure end of runway, 14' right of centerline, up to 109' AGL/478' MSL. Multiple trees beginning 414' from departure end of runway, 67' left of centerline, up to 100' AGL/519' MSL. Multiple buildings beginning 244' from departure end of runway, 320' left of centerline, up to 21' AGL/391' MSL. Building 281' from departure end of runway, 289' right of centerline, 24' AGL/374' MSL. Multiple poles beginning 230' from departure end of runway, 203' left of centerline, up to 72' AGL/462' MSL. Multiple poles beginning 67' from departure end of runway, 210' right of centerline, up to 47' AGL/406' MSL. Vehicles on road 55' from departure end of runway, 232' right of centerline, up to 15' AGL/370' MSL.

31 MAY 2012 to 28 JUN 2012

31 MAY 2012 to 28 JUN 2012

12152

TAKE-OFF MINIMUMS AND (OBSTACLE) DEPARTURE PROCEDURES


TAKE-OFF MINIMUMS AND (OBSTACLE) DEPARTURE PROCEDURES


12152

FITZGERALD, GA

FITZGERALD MUNI (FZG)

AMDT 1 11293 (FAA)

TAKE-OFF MINIMUMS: **Rwys 15,33**, NA- Environmental. DEPARTURE PROCEDURE: **Rwy 1**, climbing right turn heading 035° to 1000 before turning left.

NOTE: **Rwy 1**, trees beginning abeam DER, 96' left of centerline, up to 85' AGL/464' MSL. Trees beginning 329' from DER, 10' right of centerline, up to 100' AGL/455' MSL. Power pole 414' from DER, 428' right of centerline, 21' AGL/381' MSL. Building 783' from DER, 600' left of centerline, 8' AGL/389' MSL. Power poles beginning 885' from DER, 22' left of centerline, up to 38' AGL/396' MSL. **Rwy 19**, trees beginning 193' from DER, 452' left of centerline, up to 111' AGL/430' MSL. Trees beginning 612' from DER, 379' right of centerline, up to 83' AGL/398' MSL.

FLORALA, AL

FLORALA MUNI (0J4)

ORIG 09183 (FAA)

NOTE: **Rwy 4**, trees beginning 14' from DER, 200' right of centerline, up to 100' AGL/419' MSL. Trees beginning 470' from DER, 54' left of centerline, up to 100' AGL/429' MSL. Vehicles on roadway beginning 417' from DER, left and right of centerline, up to 15' AGL/344' MSL. **Rwy 22**, trees beginning 16' from DER, 275' right of centerline, up to 100' AGL/409' MSL. Vehicles on roadway beginning 30' from DER, 298' right of centerline, up to 17' AGL/326' MSL. Trees beginning 340' from DER, 230' left of centerline, up to 100' AGL/379' MSL. Trees beginning 1164' from DER, left and right of centerline, up to 100' AGL/369' MSL.

FOLEY, AL

FOLEY MUNI (5R4)

AMDT 1 09239 (FAA)

TAKE-OFF MINIMUMS: **Rwy 36**, std. w/min. climb of 240' per NM to 2800, or 1200-2½ for climb in visual conditions.

DEPARTURE PROCEDURE: **Rwy 36**, for climb in visual conditions, cross Foley Muni airport at or above 1100 before proceeding on course.

NOTE: **Rwy 18**, fence 52' from DER, 341' right of centerline, 12' AGL/77' MSL. Trees beginning 81' from DER, 339' left of centerline, up to 81' AGL/146' MSL. Vehicles on roadway 444' from DER, left and right of centerline, up to 15' AGL/106' MSL. Tree 1173' from DER, 558' right of centerline, 86' AGL/151' MSL. Trees beginning 1815' from DER, left and right of centerline, up to 112' AGL/177' MSL. **Rwy 36**, trees beginning 68' from DER, 360' left of centerline, up to 94' AGL/159' MSL. Trees beginning 77' from DER, 365' right of centerline, up to 97' AGL/162' MSL. Trees beginning 1126' from DER, left and right of centerline, up to 97' AGL/157' MSL. Vehicles on roadway 1176' from DER, left and right of centerline, up to 15' AGL/98' MSL. Pole 1216' from DER, 408' right of centerline, 35' AGL/95' MSL. Pole 1357' from DER, 112' left of centerline, 36' AGL/101' MSL. Pole 1513' from DER, 183' left of centerline, 39' AGL/104' MSL.

FORT PAYNE, AL

ISBELL FIELD (4A9)

AMDT 1 10266 (FAA)

TAKE-OFF MINIMUMS: **Rwy 4**, 400-2½ or std. w/min. climb of 410' per NM to 1400. **Rwy 22**, 400-2 or std. w/min. climb of 290' per NM to 1600.

DEPARTURE PROCEDURE: **Rwy 4**, climb heading 044° to 2400 before proceeding on course. **Rwy 22**, climb heading 224° to 2300 before proceeding on course.

NOTE: **Rwy 4**, trees beginning 111' from DER, 75' right of centerline, up to 100' AGL/1119' MSL. Poles beginning 879' from DER, 373' right of centerline, up to 125' AGL/1224' MSL. Obstruction light on WSK 66' from DER, 328' right of centerline, 78' AGL/957' MSL. Vehicles beginning 322' from DER, 285' right of centerline, up to 15' AGL/921' MSL. Buildings beginning 217' from DER, 426' right of centerline, up to 21' AGL/920' MSL. Fence beginning 494' from DER, 397' right of centerline, up to 6' AGL/892' MSL. GRD beginning 292' from DER, 289' right of centerline, up to 879' MSL. Trees beginning 569' from DER, 119' left of centerline, up to 100' AGL/973' MSL. Poles beginning 176' from DER, 397' left of centerline, up to 40' AGL/919' MSL. Building 935' from DER, 636' left of centerline, 39' AGL/918' MSL. Vehicles beginning 82' from DER, 359' left of centerline, up to 15' AGL/887' MSL. Fence 182' from DER, 299' left of centerline, 6' AGL/880' MSL. **Rwy 22**, trees beginning 59' from DER, 122' left of centerline, 100' AGL/1319' MSL. Poles beginning 1224' from DER, 101' left of centerline, up to 96' AGL/955' MSL. Trees beginning 46' from DER, 101' right of centerline, up to 100' AGL/972' MSL. Poles beginning 204' from DER, 17' right of centerline, up to 53' AGL/892' MSL. Vehicles beginning 137' from DER, 292' right of centerline, up to 15' AGL/869' MSL. Building 316' from DER, 476' right of centerline, 15' AGL/874' MSL.

FORT STEWART (HINESVILLE), GA

WRIGHT AAF (FORT STEWART)/MIDCOAST

RGNL (LHW)

ORIG 09183 (FAA)

TAKE-OFF MINIMUMS: **Rwys 6R, 15R, 24L, 33L**, NA-Obstacles.

NOTE: **Rwy 6L**, trees beginning 191' from DER, 207' left of centerline, up to 100' AGL/139' MSL. Trees beginning 27' from DER, 292' right of centerline, up to 100' AGL/149' MSL. **Rwy 15L**, trees beginning 201' from DER, 84' left of centerline, up to 100' AGL/129' MSL. Trees 249' from DER, 171' right of centerline, 100' AGL/139' MSL. **Rwy 24R**, trees beginning 80' from DER, 48' left of centerline, up to 100' AGL/159' MSL. Trees beginning 145' from DER, 317' right of centerline, up to 100' AGL/159' MSL. **Rwy 33R**, trees beginning 104' from DER, 101' left of centerline, up to 100' AGL/179' MSL. Trees beginning 68' from DER, 32' right of centerline, up to 100' AGL/159' MSL.

31 MAY 2012 to 28 JUN 2012

31 MAY 2012 to 28 JUN 2012

12152


TAKE-OFF MINIMUMS AND (OBSTACLE) DEPARTURE PROCEDURES




TAKE-OFF MINIMUMS AND (OBSTACLE) DEPARTURE PROCEDURES



GADSDEN, AL

NORTHEAST ALABAMA RGNL (GAD)

AMDT 4 12040 (FAA)

TAKE-OFF MINIMUMS: **Rwy 18**, std. w/ min climb of 340' per NM to 1700 or 1300-2½ for climb in visual conditions. **Rwy 36**, std. w/ min. climb of 307' per NM to 1500 or 1300-2½ for climb in visual conditions.

DEPARTURE PROCEDURE: **Rwy 6**, climb heading 064° to 1300 before proceeding on course. **Rwy 18**, for climb in visual conditions cross Northeast Alabama Rgnl Airport at or above 1700 before proceeding on course. **Rwy 24**, climb heading 244° to 2000 before proceeding on course. **Rwy 36**, climb heading 003° to 1100 before proceeding on course or for climb in visual conditions cross Northeast Alabama Rgnl Airport at or above 1700 before proceeding on course.

NOTE: **Rwy 6**, trees beginning 899' from DER, 620' left of centerline, up to 100' AGL/609' MSL. **Rwy 18**, trees beginning 362' from DER, 27' left of centerline, up to 100' AGL/648' MSL. Trees beginning 1471' from DER, 220' right of centerline, up to 100' AGL/652' MSL. **Rwy 36**, trees beginning 102' from DER, 261' right of centerline, up to 100' AGL/659' MSL. Trees beginning 303' from DER, 70' left of centerline, up to 100' AGL/639' MSL. Tower 6045' from DER, 1155' right of centerline, 160' AGL/705' MSL.

GAINESVILLE, GA

LEE GILMER MEMORIAL

TAKE-OFF MINIMUMS: **Rwy 5**, 300-1¼ or std. w/ min. climb of 311' per NM to 1600.

DEPARTURE PROCEDURE: **Rwy 5**, climb heading 055° to 2100 before proceeding on course. **Rwy 11**, climb heading 110° to 1900 before turning north. **Rwy 23**, climb heading 224° to 2700 before turning south.

NOTE: **Rwy 5**, multiple trees beginning 662' from departure end of runway, 78' right of centerline, up to 93' AGL/1330' MSL. Multiple trees and pole beginning 301' from departure end of runway, on centerline, up to 137' AGL/1361' MSL. Chimney 2298' from departure end of runway, 618' left of centerline, 131' AGL/1349' MSL. Building 73' from departure end of runway, 356' right of centerline, 18' AGL/1252' MSL. Tower 6415' from departure end of runway, 404' left of centerline, 206' AGL/1426' MSL. Tower 6538' from departure end of runway, 486' left of centerline, 214' AGL/1428' MSL. **Rwy 11**, trees 770' from departure end of runway, on centerline, 60' AGL/1317' MSL. **Rwy 23**, multiple trees beginning 443' from departure end of runway, 220' right of centerline, up to 98' AGL/1319' MSL. Trees 415' from departure end of runway, 304' left of centerline, 86' AGL/1291' MSL. **Rwy 29**, trees 1256' from departure end of runway, on centerline, 52' AGL/1306' MSL.

GREENSBORO, GA

GREENE COUNTY RGNL (3J7)

AMDT 3 10210 (FAA)

TAKE-OFF MINIMUMS: **Rwy 25**, 400-2.

NOTE: **Rwy 7**, trees beginning 438' from DER, 8' right of centerline, up to 100' AGL/759' MSL. Vehicle on roadway 485' from DER, 603' left of centerline, 15' AGL/714' MSL. Train on tracks 623' from DER, 661' left of centerline, 23' AGL/722' MSL. Trees beginning 624' from DER, 36' left of centerline, up to 100' AGL/779' MSL. **Rwy 25**, vehicle on road, 7' from DER, 318' right of centerline, 15' AGL/695' MSL. Trees 2555' from DER, 208' right of centerline, up to 100' AGL/779' MSL. Vehicle on roadway, 86' from DER, 190' left of centerline, 15' AGL/690' MSL. trees 96' from DER, 76' left of centerline, up to 100' AGL/799' MSL. Water tower 2396' from DER, 1070' left of centerline, 199' AGL/870' MSL.

GREENVILLE, AL

MAC CRENSHAW MEMORIAL

DEPARTURE PROCEDURE: **Rwy 14**, climb via heading 142° to 900 before proceeding on course. **Rwy 32**, climb via heading 322° to 900 before proceeding on course.

NOTE: **Rwy 14**, tower 2934' from departure end of runway, 565' right of centerline, 104' AGL/528' MSL, tree 1400' from departure end of runway, on centerline, 60' AGL/485' MSL.

GRIFFIN, GA

GRIFFIN-SPALDING COUNTY

DEPARTURE PROCEDURE: **Rwy 32**, climb runway heading to 1200 before turning left.

GULF SHORES, AL

JACK EDWARDS

NOTE: **Rwy 17**, multiple trees beginning 1300' from departure end of runway, on centerline, up to 55' AGL/67' MSL. **Rwy 27**, multiple trees beginning 837' from departure end of runway, 66' left of centerline, up to 99' AGL/103' MSL. Multiple trees beginning 829' from departure end of runway, 175' right of centerline, up to 99' AGL/103' MSL. Multiple light poles beginning 1243' from departure end of runway, 14' right of centerline, up to 46' AGL/50' MSL. Light pole beginning 1403' from departure end of runway, 137' left of centerline, up to 47' AGL/51' MSL. **Rwy 35**, multiple trees beginning 1650' from departure end of runway, on centerline, up to 50' AGL/67' MSL.

31 MAY 2012 to 28 JUN 2012

31 MAY 2012 to 28 JUN 2012



TAKE-OFF MINIMUMS AND (OBSTACLE) DEPARTURE PROCEDURES

12152

GUNTERSVILLE, AL

GUNTERSVILLE MUNI-JOE STARNES FIELD

TAKE-OFF MINIMUMS: **Rwy 3**, std. w/ min. climb of 334' per NM to 2500 or 1100-2½' for climb in visual conditions.

Rwy 21, std. w/ min. climb of 496' per NM to 2500, or 300-1¼ w/ min. climb of 274' per NM to 1600, or 1100-2½' for climb in visual conditions.

DEPARTURE PROCEDURE: **Rwy 3**, climb heading 027° to 2500 before proceeding on course or for climb in visual conditions cross Guntersterville Muni-Joe Starnes Field Airport at or above 1600 before proceeding on course.

Rwy 21, climb heading 207° to 2500 before proceeding on course or for climb in visual conditions cross Guntersterville Muni-Joe Starnes Field Airport at or above 1600 before proceeding on course.

NOTE: **Rwy 3**, multiple trees beginning 2299' from departure end of runway, 27' left of centerline, up to 100' AGL/1399' MSL. Tower 1.6NM from departure end of runway, 2465' left of centerline, 208' AGL/851' MSL. **Rwy 21**, multiple trees beginning 151' from departure end of runway, 362' left of centerline, up to 100' AGL/759' MSL. Multiple trees beginning 3613' from departure end of runway, 152' right of centerline, up to 100' AGL/859' MSL.

HALEYVILLE, AL

POSEY FIELD(1M4)

ORIG-A 10182 (FAA)

NOTE: **Rwy 18**, trees beginning 2372' from DER, 1009' left of centerline, up to 78' AGL/1052' MSL. Trees beginning 78' from DER, 257' right of centerline, up to 82' AGL/1021' MSL. **Rwy 36**, trees beginning 7' from DER, 276' left of centerline, up to 75' AGL/1005' MSL. Trees beginning 383' from DER, 277' right of centerline, up to 73' AGL/1003' MSL. Fence 204' from DER, 202' right of centerline, 6' AGL/936' MSL.

HAMILTON, AL

MARION COUNTY-RANKIN FITE (HAB)

AMDT 1 11349 (FAA)

TAKE-OFF MINIMUMS: **Rwy 18**, 400-2½ or std. w/ min. climb of 390' per NM to 800. **Rwy 36**, 400 - 2 ½ or std. w/ min. climb of 370' per NM to 900.

DEPARTURE PROCEDURE: **Rwy 18**, climb heading 181° to 900 before turning left. **Rwy 36**, climb heading 001° to 1000 before turning left.

NOTE: **Rwy 18**, trees beginning 53' from DER, left and right of centerline, up to 100' AGL/699' MSL. Trees beginning 1.5 NM from DER, 2172' left of centerline, up to 100' AGL/719' MSL. **Rwy 36**, trees beginning 122' from DER, left and right of centerline, up to 100' AGL/ 573' MSL. Building 2368' from DER, 411' right of centerline, 50' AGL/501' MSL. Vehicles on roadway beginning 2511' from DER, 1124' left of centerline, up to 17' AGL/516' MSL. Pole 3009' from DER, 309' left of centerline, 70' AGL/569' MSL. Towers and trees beginning 1.1 NM from DER, left and right of centerline, up to 115' AGL/779' MSL.

HAMLTON, GA

CLAYTON COUNTY-TARA FIELD

NOTE: **Rwy 6**, trees beginning 1357' from departure end of runway, 368' left of centerline, up to 70' AGL/969' MSL. Road 1276' from departure end of runway, 136' left of centerline, 15' AGL/914' MSL. **Rwy 24**, trees beginning 452' from departure end of runway, 2' left of centerline, up to 70' AGL/909' MSL.

HANCHEY AHP (KHEY)

FORT RUCKER, AL. ORIG, 08325

Rwy 17, 35 standard.

All Helipads NA - ATC.

DEPARTURE PROCEDURE: **Rwy 17**: Climb hdg 182° to 800 before proceeding on course. **Rwy 35**: Climb hdg 002° to 800 before proceeding on course.

HARTSELLE, AL

HARTSELLE-MORGAN COUNTY RGNL

TAKE-OFF MINIMUMS: **Rwy 36**, 500-2½ or std. with a min. climb of 260' per NM to 1200.

NOTE: **Rwy 18**, trees abeam departure end of runway, 300' left of centerline, up to 100' AGL/739' MSL. Multiple buildings 150' from departure end of runway, 432' left of centerline, up to 40' AGL/679' MSL. Multiple trees 265' from departure end of runway, 133' right of centerline, up to 100' AGL/699' MSL. **Rwy 36**, trees 3089' from departure end of runway, 426' left of centerline, 100' AGL/779' MSL. Trees 1139' from departure end of runway, 98' right of centerline, 45' AGL/ 673' MSL. Tower 1.85 NM from departure end of runway, 2953' left of centerline, 249' AGL/928' MSL. Multiple buildings beginning 755' from departure end of runway, 775' right of centerline, up to 40' AGL/689' MSL. Tower 2.15 NM from departure end of runway, 295' left of centerline, 303' AGL/990' MSL.

HAZLEHURST, GA

HAZLEHURST (AZE)

ORIG 08157 (FAA)

NOTE: **Rwy 14**, trees beginning 813' from departure end of runway, 328' left of centerline, up to 100' AGL/369' MSL. **Rwy 32**, trees beginning 46' from departure end of runway, 200' left of centerline, up to 100' AGL/299' MSL. Trees 1356' from departure end of runway 574' right of centerline, up to 100' AGL/309' MSL.

HEADLAND, AL

HEADLAND MUNI

NOTE: **Rwy 9**, trees 275' from departure end of runway, 90' left of centerline, 15' AGL/369' MSL. **Rwy 27**, road and vehicle 625' from departure end of runway, 500' right of centerline, 17' AGL/376' MSL.

31 MAY 2012 to 28 JUN 2012

31 MAY 2012 to 28 JUN 2012

12152

TAKE-OFF MINIMUMS AND (OBSTACLE) DEPARTURE PROCEDURES



TAKE-OFF MINIMUMS AND (OBSTACLE) DEPARTURE PROCEDURES



12152

HOMERVILLE, GA
HOMERVILLE (HOE)
 ORIG 10210 (FAA)

DEPARTURE PROCEDURE: **Rwy 14**, climb heading 138° to 700 before proceeding on course.

NOTE: **Rwy 14**, vehicle on road 56' from DER, 443' right of centerline, up to 15' AGL/200' MSL. Vehicle on road 161' from DER, 532' left of centerline, up to 15' AGL/197' MSL. Trees beginning 114' from DER, 492' right of centerline, up to 100' AGL/279' MSL. Trees beginning 2023' from DER, 183' left of centerline, up to 93' AGL/268' MSL. Tower 2807' from DER, 446' left of centerline, 111' AGL/287' MSL. **Rwy 32**, vehicle on road 270' from DER, 562' right of centerline, up to 15' AGL/200' MSL. Trees beginning 322' from DER, 323' right of centerline, up to 100' AGL/289' MSL. Trees beginning 129' from DER, 395' left of centerline, up to 100' AGL/299' MSL.

HUNTER AAF (KSVN) AMDT 2 03191
 SAVANNAH, GA

..... Rwy 28, 300-1*

* Or standard with minimum climb of 340/NM to 400.
 Rwy 28, climbing left turn hdg 230° to 1700 before proceeding on course.

HUNTSVILLE, AL
 HUNTSVILLE INTL-CARL T. JONES FIELD (HSV)
 AMDT 2 12040 (FAA)

DEPARTURE PROCEDURE: **Rwy 36R**, climb heading 002° to 1300 before turning right.

NOTE: **Rwy 18L**, trees beginning 1088' from DER, 710' left of centerline, up to 100' AGL/660' MSL. **Rwy 36L**, trees beginning 1911' from DER, 904' right of centerline, up to 100' AGL/719' MSL. Trees beginning 3693' from DER, 1392' left of centerline, up to 100' AGL/749' MSL. **Rwy 36R**, fence 383' from DER, 602' right of centerline, up to 11' AGL/620' MSL. Trees beginning 1312' from DER, 799' right of centerline, up to 100' AGL/729' MSL.

MADISON COUNTY EXECUTIVE/TOM SHARP JR. FIELD (MDQ)

AMDT 3A 11069 (FAA)

TAKE-OFF MINIMUMS: **Rwy 36**, 200-1½ or std. with a min. climb of 260' per NM to 1100.

DEPARTURE PROCEDURE: **Rwy 18**, climbing left turn heading 360° to 1500 before turning on course. **Rwy 36**, climb runway heading to 1500 before turning on course.

NOTE: **Rwy 18**, multiple trees beginning 1194' from DER, 478' right of centerline, up to 100' AGL/822' MSL. **Rwy 36**, multiple trees beginning 720' from DER, left and right of centerline, up to 100' AGL/926' MSL. Tree line 6250' from DER, on centerline, 75' AGL/934' MSL.

JACKSON, AL
 JACKSON MUNI (4R3)
 ORIG 10154 (FAA)

TAKE-OFF MINIMUMS: **Rwy 1**, std. w/min. climb of 252' per NM to 1000 or 1100-2½ for climb in visual conditions. **Rwy 19**, 300-1½ ceiling and visibility to allow see and avoid operation in lieu of required climb gradient for standard minima.

DEPARTURE PROCEDURE: **Rwy 1**, for climb in visual conditions: cross Jackson Muni airport at or above 1000 MSL before proceeding on course.

NOTE: **Rwy 1**, trees beginning at DER, 400' left/right of centerline, up to 100' AGL/134' MSL. **Rwy 19**, trees beginning at DER, 400' left/right of centerline, up to 100' AGL/279' MSL.

JASPER, AL
 WALKER COUNTY-BEVILL FIELD (JFX)
 AMDT 1 12152 (FAA)

TAKE-OFF MINIMUMS: **Rwy 27**, 300-1¼ or std. w/min. climb of 259' per NM to 800.

NOTE: **Rwy 9**, trees beginning 614' from DER, 132' left of centerline, up to 95' AGL/574' MSL. Vehicles on road, pole, and trees beginning 28' from DER, 88' right of centerline, up to 100' AGL/599' MSL. **Rwy 27**, vehicles on road and trees beginning 7' from DER, 165' left of centerline, up to 95' AGL/572' MSL. Trees beginning 55' from DER, 24' right of centerline, up to 93' AGL/628' MSL. Trees 4728' from DER, 1559' right of centerline, up to 80' AGL/639' MSL. Trees 5615' from DER, 1882' right of centerline, up to 112' AGL/651' MSL. Trees 5765' from DER, 1882' right of centerline, up to 108' AGL/647' MSL.

JASPER, GA
 PICKENS COUNTY

TAKE-OFF MINIMUMS: **Rwy 34**, 300-1 or std. w/min. climb of 255' per NM to 1800, or alternatively, w/standard takeoff minimums and a normal 200'/NM climb gradient, takeoff must occur no later than 2100' prior to departure end.

DEPARTURE PROCEDURE: **Rwy 16**, climb heading 163° to 3000 before turning. **Rwy 34**, climb heading 343° to 3100 before turning.

NOTE: **Rwy 16**, numerous trees beginning 44' from departure end of runway, 338' left of centerline, up to 65' AGL/1565' MSL. Trees 127' from departure end of runway, 398' right of centerline, up to 61' AGL/1581' MSL. **Rwy 34**, pole and numerous trees beginning 141' from departure end of runway, 25' right of centerline, up to 112' AGL/1611' MSL. Numerous trees beginning 394' from departure end of runway, 37' left of centerline, up to 79' AGL/1654' MSL.

JEFFERSON, GA
 JACKSON COUNTY (19A)
 AMDT 2 09295 (FAA)

DEPARTURE PROCEDURE: **Rwy 17**, climb heading 168° to 2500 before turning. **Rwy 35**, climb heading 348° to 2500 before turning.

NOTE: **Rwy 17**, scrub and trees beginning 61' from DER, 67' right of centerline up to 117' AGL/997' MSL. Pylons and trees beginning 190' from DER, 167' left of centerline, up to 99' AGL/999' MSL. **Rwy 35**, trees beginning 0' from DER, 171' right and 297' left of centerline up to 100' AGL/1019' MSL.

JEKYLL ISLAND, GA
 JEKYLL ISLAND (09J)
 ORIG 08045 (FAA)

NOTE: **Rwy 18**, Vehicle on road beginning 9' from departure end of runway, 411' left of centerline, up to 15' AGL/42' MSL. Trees 200' from departure end of runway, 159' left of centerline, 50' AGL/61' MSL.

JESUP, GA
 JESUP-WAYNE COUNTY (JES)
 ORIG 09295 (FAA)

NOTE: **Rwy 11**, trees beginning 52' from DER, 497' left of centerline, up to 100' AGL/154' MSL. Trees beginning 312' from DER, 294' right of centerline, up to 100' AGL/154' MSL. **Rwy 29**, trees beginning 1811' from DER, 181' left of centerline, up to 100' AGL/188' MSL. Trees beginning 24' from DER, 98' right of centerline, up to 100' AGL/190' MSL.

12152



TAKE-OFF MINIMUMS AND (OBSTACLE) DEPARTURE PROCEDURES



31 MAY 2012 to 28 JUN 2012

31 MAY 2012 to 28 JUN 2012

TAKE-OFF MINIMUMS AND (OBSTACLE) DEPARTURE PROCEDURES

12152

LAFAYETTE, GA

BARWICK LAFAYETTE (9A5)
AMDT 1 09015 (FAA)

TAKE-OFF MINIMUMS: **Rwy 20**, 500-3 or std. w/min. climb of 465' per NM to 1400.

DEPARTURE PROCEDURE: **Rwy 2**, climb heading 022° to 2200 before proceeding on course. **Rwy 20**, climb heading 202° to 2300 before proceeding on course.

NOTE: **Rwy 2**, train on track 39' from departure end of runway, 241' left of centerline, 23' AGL/809' MSL. Building 418' from departure end of runway, 191' left of centerline, 40' AGL/849' MSL. Trees beginning 4420' from departure end of runway, 1171' left of centerline, up to 100' AGL/919' MSL. Trees beginning 5609' from departure end of runway, 372' right of centerline, up to 100' AGL/919' MSL. **Rwy 20**, train on track 46' from departure end of runway, 323' right of centerline, 23' AGL/809' MSL. Buildings beginning 1602' from departure end of runway, 907' right of centerline, up to 25' AGL/825' MSL. Vehicle on road 1021' from departure end of runway, 104' left of centerline, 15' AGL/802' MSL. Train on track 762' from departure end of runway, on centerline, 23' AGL/803' MSL.

LAGRANGE, GA

LAGRANGE-CALLAWAY (LGC)
AMDT 1A 11097 (FAA)

TAKE-OFF MINIMUMS: **Rwy 3**, 400-1½ or std. w/min. climb of 425' per NM to 1200. **Rwy 13**, 300-1. **Rwy 21**, 300-1 or std. w/min. climb of 320' per NM to 1000. **Rwy 31**, 300-1½ or std. w/min. climb of 260' per NM to 1000. DEPARTURE PROCEDURE: **Rwy 3**, building with tower 1 NM from DER, 1124' right of centerline, 150' AGL/885' MSL. **Rwy 13**, trees beginning 5' from DER, 489' right of centerline, up to 100' AGL/754' MSL. **Rwy 21**, trees beginning 130' from DER, 242' left of centerline, up to 91' AGL/850' MSL. Trees beginning 1121' from DER, 22' right of centerline, up to 66' AGL/805' MSL. **Rwy 31**, climb heading 307° to 1500 before turning South. Trees beginning 165' from DER, 158' right of centerline, up to 91' AGL/890' MSL. Trees beginning 538' from DER, 165' left of centerline, up to 98' AGL/857' MSL.

LANETT, AL

LANETT MUNI

TAKE-OFF MINIMUMS: **Rwy 8**, 300-1 or std. with a min. climb of 500' per NM to 900.

LAWRENCEVILLE, GA

GWINNETT COUNTY-BRISCOE FIELD (LZU)
AMDT 6 11293 (FAA)

TAKE-OFF MINIMUMS: **Rwy 25**, 300-1 or std. w/min. climb of 330' per NM to 1400.

DEPARTURE PROCEDURE: **Rwy 7**, climb heading 069° to 2600 before turning left.

NOTE: **Rwy 7**, trees beginning 724' from DER, left and right of centerline, up to 110' AGL/1118' MSL. Rods on floodlights beginning 2619' from DER, 686' right of centerline, up to 143' AGL/1104' MSL. **Rwy 25**, vehicle on roadway beginning 1187' from DER, left and right of centerline, up to 15' AGL/1114' MSL. Poles and antennas beginning 1221' from DER, left and right of centerline, up to 167' AGL/1159' MSL. Trees beginning 1244' from DER, left and right of centerline, up to 88' AGL/1166' MSL. Mast 5008' from DER, 1147' left of centerline, 207' AGL/1268' MSL. Tower 5030' from DER, 1141' left of centerline, 187' AGL/1268' MSL.

LAWSON AAF, (KLSF)

FORT BENNING (COLUMBUS), GA 07158
Rwy 15, Standard
Rwy 33, 400-2*

*Or standard with minimum climb of 300'/NM to 1000. **Rwy 15**, climb via heading 150° to 2000 before turning left. **Rwy 33**, Climb via heading 330° to 1000 before turning right.

TAKE-OFF OBSTACLES:

NOTE: **Rwy 15**, trees 1800 feet from DER, 162 feet left of centerline, 54 feet AGL/280 feet MSL.

NOTE: **Rwy 33**, tree 1.86 NM from DER, 3462 feet left of centerline, 100 feet AGL/569 feet MSL.

LOWE AHP (KLOR)

FORT RUCKER, AL ORIG A, 11349

Helipad WHISKEY, ECHO, BRAVO standard. all other helipads NA.

DEPARTURE PROCEDURE: **Helipad WHISKEY**: hover at 274' MSL/30' AGL, then climb hdg 183° to 700 before proceeding on course. **Helipad ECHO**: climb hdg 125° to 700 before proceeding on course. **Helipad BRAVO**: Hover at 318' MSL/35' AGL, then climb hdg 183° to 700 before proceeding on course.

MACON, GA

MACON DOWNTOWN

TAKE-OFF MINIMUMS: **Rwy 15**, 500-1 or std. with a min. climb of 470' per NM to 1000.

DEPARTURE PROCEDURE: **Rwy 10**, climb runway heading to 1100 before turning north. **Rwy 15**, climb runway heading to 1400 before turning south.

MIDDLE GEORGIA RGNL (MCN)

AMDT 3 10070 (FAA)

TAKE-OFF MINIMUMS: **Rwy 5**, std. w/min. climb of 210' per NM to 1500, or 1000-2½ for climb in visual conditions.

DEPARTURE PROCEDURE: **Rwy 5**, for climb in visual conditions cross Middle Georgia Rgnl airport at or above 1200 before proceeding on course.

NOTE: **Rwy 5**, trees and poles beginning 40' from DER, 59' left of centerline, up to 86' AGL/436' MSL. Trees, towers, and aircraft equipment beginning 112' from DER, 8' right of centerline, up to 82' AGL/432' MSL. **Rwy 13**, trees beginning 280' from DER, 279' left of centerline, up to 89' AGL/429' MSL. Trees beginning 2153' from DER, 136' right of centerline, up to 81' AGL/411' MSL. **Rwy 23**, trees beginning 69' from DER, left and right of centerline, up to 113' AGL/383' MSL.

Rwy 31, trees beginning 636' from DER, 209' right of centerline, up to 98' AGL/398' MSL. Trees beginning 925' from DER, 54' left of centerline, up to 90' AGL/440' MSL.

12152

TAKE-OFF MINIMUMS AND (OBSTACLE) DEPARTURE PROCEDURES



TAKE-OFF MINIMUMS AND (OBSTACLE) DEPARTURE PROCEDURES



MADISON, GA MADISON MUNI (52A) ORIG 11069 (FAA)

NOTE: **Rwy 14**, fences beginning abeam DER, 130' left and 269' right of centerline, 9' AGL/703' MSL. Building abeam DER, 424' right of centerline, 30' AGL/729' MSL. Vehicles on roadway abeam DER, 212' left of centerline, up to 15' AGL/714' MSL. Fence 200' from DER, left and right of centerline, 9' AGL/703' MSL. Vehicles on roadway 210' from DER, left and right of centerline, up to 15' AGL/714' MSL. Trains beginning 276' from DER, left and right of centerline, up to 23' AGL/722' MSL. Trees beginning 463' from DER. 468' left of centerline, up to 100' AGL/819' MSL. Building 643' from DER, 440' left of centerline, 20' AGL/719' MSL. Trees beginning 752' from DER, 213' right of centerline, up to 100' AGL/799' MSL. Powerlines beginning 1298' from DER, 246' left of centerline, up to 100' AGL/719' MSL. **Rwy 32**, trees beginning abeam DER, 250' right of centerline, up to 100' AGL/719' MSL. Trees beginning abeam DER, 300' left of centerline, up to 100' AGL/719' MSL. Trees beginning 680' from DER, left and right of centerline, up to 100' AGL/719' MSL.

MAXWELL AFB (KMXF) MONTGOMERY, AL AMDT 3, 09183 **Rwy 15**, 200-1¼

With minimum climb of 280 ft/NM to 1400.*
* Or standard with minimum climb of 330 ft/NM to 1400.

TAKE-OFF OBSTACLES: **Rwy 15**: Tree Canopy 1943' from DER, 682' right of centerline, 67' AGL/233' MSL. Tree Canopy 2121' from DER, 1062' left of centerline, 76' AGL/236' MSL. Pylon 4607' from DER, 2118' left of centerline, 39' AGL/225' MSL. Pylon 4588' from DER, 1798' left of centerline, 79' AGL/264' MSL.

MC REA, GA TELFAIR-WHEELER (MQW) AMDT 1 10210 (FAA)

DEPARTURE PROCEDURE: **Rwy 21**, climb via heading 206° to 700 before proceeding on course.
NOTE: **Rwy 3**, trees beginning 1260' from DER, 207' left of centerline, up to 100' AGL/303' MSL. Vehicle on roadway 2735' from DER, 720' right of centerline, 15' AGL/264' MSL. **Rwy 21**, vehicles on roadway beginning abeam DER, 301' left of centerline, up to 15' AGL/224' MSL. Trees beginning 79' from DER, 457' left of centerline, up to 100' AGL/266' MSL. Silo 1665' from DER, 927' left of centerline, 100' AGL/307' MSL. Vehicles on roadway beginning 125' from DER, 523' right of centerline, up to 15' AGL/234' MSL. Trees beginning 543' from DER, 397' right of centerline, up to 100' AGL/276' MSL.

METTER, GA METTER MUNI (MHP) ORIG 08157 (FAA)

NOTE: **Rwy 10**, vehicles on interstate, abeam departure end of runway, 315' left of centerline, up to 17' AGL/216' MSL. Trees beginning 1506' from departure end of runway, 866' left of centerline, up to 100' AGL/289' MSL. Trees beginning 2349' from departure end of runway, 613' right of centerline, up to 100' AGL/289' MSL. **Rwy 28**, trees beginning abeam departure end of runway, left and right of centerline, up to 100' AGL/289' MSL. Vehicles on interstate, abeam departure end of runway, 295' right of centerline, up to 17' AGL/196' MSL.

MILLEDGEVILLE, GA BALDWIN COUNTY (MLJ) AMDT 1 10210 (FAA)

TAKE-OFF MINIMUMS: **Rwy 28**, 300-1 or std. w/min. climb of 330' per NM to 700.
DEPARTURE PROCEDURE: **Rwy 10**, climb heading 096° to 1000 before turning. **Rwy 28**, climb heading 276° to 1400 before turning right.
NOTE: **Rwy 10**, trees beginning 67' from DER, 87' right of centerline, up to 100' AGL/449' MSL. Utility poles beginning 196' from DER, 268' right of centerline, up to 30' AGL/372' MSL. Trees beginning 62' from DER, 298' left of centerline, up to 100' AGL/445' MSL. Utility poles beginning 135' from DER, 381' left of centerline, up to 30' AGL/380' MSL. Multiple structures beginning 242' from DER, 523' left of centerline up to 19' AGL/369' MSL. **Rwy 28**, trees beginning 12' from DER, 64' right of centerline, up to 100' AGL/500' MSL. Terrain 729' from DER, 495' right of centerline, 437' MSL. Trees beginning 515' from DER, 59' left of centerline, up to 100' AGL/534' MSL.

MILLEN, GA MILLEN

NOTE: **Rwy 17**, trees 1600' from departure end of runway, on centerline, 92' AGL/315' MSL. **Rwy 35**, trees 250' from departure end of runway, 50' right of centerline, 70' AGL/308' MSL.

MOBILE, AL MOBILE DOWNTOWN (BFM) AMDT 1 09127 (FAA)

TAKE-OFF MINIMUMS: **Rwy 14**, 400-2¼ or std. w/min. climb of 244' per NM to 500.
DEPARTURE PROCEDURE: **Rwy 36**, climb heading 001° to 900 before turning right.
NOTE: **Rwy 18**, trees beginning 1453' from DER, 54' right of centerline, up to 100' AGL/129' MSL. Trees beginning 2646' from DER, 120' left of centerline, up to 73' AGL/102' MSL. **Rwy 32**, sign 2780' from DER, 1041' left of centerline, 109' AGL/119' MSL, trees beginning 847' from DER, 35' right of centerline, up to 100' AGL/109' MSL, trees beginning 1089' from DER, 19' left of centerline, up to 100' AGL/107' MSL. **Rwy 36**, poles beginning 1231' from DER, 319' right of centerline, up to 49' AGL/69' MSL, trees beginning 467' from DER, 325' right of centerline, up to 55' AGL/84' MSL.

MOBILE RGNL (MOB) AMDT 1 08101 (FAA)

NOTE: **Rwy 14**, tree 1758' from departure end of runway, 886' left of centerline, 79' AGL/270' MSL. Tree 1987' from departure end of runway, 856' left of centerline, 73' AGL/277' MSL. Tree 2102' from departure end of runway, 861' right of centerline, 78' AGL/269' MSL. Tree 2131' from departure end of runway, left of centerline, 76' AGL/280' MSL. **Rwy 18**, multiple trees beginning 1597' from departure end of runway, 15' left of centerline, up to 69' AGL/273' MSL. Multiple trees beginning 1671' from departure end of runway, 207' right of centerline, up to 87' AGL/278' MSL. **Rwy 36**, multiple trees beginning 1083' from departure end of runway, 210' right of centerline, up to 84' AGL/301' MSL. Multiple trees beginning 532' from departure end of runway, 43' left of centerline, up to 73' AGL/287' MSL.

31 MAY 2012 to 28 JUN 2012

31 MAY 2012 to 28 JUN 2012



TAKE-OFF MINIMUMS AND (OBSTACLE) DEPARTURE PROCEDURES



TAKE-OFF MINIMUMS AND (OBSTACLE) DEPARTURE PROCEDURES

12152

MONROE, GA

MONROE-WALTON COUNTY (D73)

AMDT 1 08101 (FAA)

DEPARTURE PROCEDURE: **Rwy 3**, climb heading 035° to 1700 before proceeding on course.

NOTE: **Rwy 3**, trees beginning 587' from departure end of runway, 469' left of centerline, up to 100' AGL/939' MSL. Trees beginning 1003' from departure end of runway, 104' right of centerline, up to 100' AGL/929' MSL. **Rwy 21**, trees beginning 878' from departure end of runway, 388' left of centerline, up to 100' AGL/989' MSL. Trees beginning 988' from departure end of runway, 694' right of centerline, up to 100' AGL/999' MSL.

MONROEVILLE, AL

MONROE COUNTY (MVC)

ORIG 07354 (FAA)

NOTE: Trees beginning 1085' from departure end of runway, 274' left of centerline, up to 100' AGL/529' MSL. Trees beginning 488' from departure end of runway, 291' right of centerline, up to 100' AGL/529' MSL. **Rwy 21**, vehicle on road 750' from departure end of runway, 661' right of centerline, 15' AGL/434' MSL. Trees abeam departure end of runway, 376' right of centerline, up to 56' AGL/475' MSL. Trees beginning 219' from departure end of runway, 224' left of centerline, up to 56' AGL/474' MSL.

MONTEZUMA, GA

DR. C.P. SAVAGE SR.

TAKE-OFF MINIMUMS: **Rwy 36**, 300-1.

NOTE: **Rwy 18**, power line 1050' from departure end of runway, on centerline, 38' AGL/376' MSL. **Rwy 36**, trees 1212' from departure end of runway, 400' right of centerline, 92' AGL/428' MSL. Tower 3284' from departure end of runway, 1325' right of centerline, 201' AGL/600' MSL.

MONTGOMERY, AL

MONTGOMERY RGNL

(DANNELLY FIELD)

TAKE-OFF MINIMUMS: **Rwy 21**, 400-1 or std. with a min. climb of 350' per NM to 400.

MOODY AFB (KVAD)

VALDOSTA, GA. AMDT 1, 08129

DEPARTURE PROCEDURE: **Rwy 36L**, Cross DER at or above 3' AGL/233' MSL. **Rwy 36R**, Cross DER at or above 1' AGL/234' MSL.

TAKE-OFF OBSTACLES: **Rwy 18R**, Aircraft on Twy A, 72' from DER, 465' left of centerline, 38' AGL/253' MSL. **Rwy 36L**, Tree 6121' from DER, 541' right of centerline, 120' AGL/386' MSL. Aircraft on Twy L, 283' from DER, 451' left of centerline, 38' AGL/269' MSL. **Rwy 36R**, Tree 6103' from DER, 147' left of centerline, 120' AGL/386' MSL.

MOULTRIE, GA

MOULTRIE MUNI

TAKE-OFF MINIMUMS: **Rwy 34**, 300-1, or std. with a min. climb of 370' per NM to 500.

MUSCLE SHOALS, AL

NORTHWEST ALABAMA RGNL (MSL)

ORIG 10014 (FAA)

DEPARTURE PROCEDURE: **Rwy 18**, climb heading 181° to 1400 before turning right.

NOTE: **Rwy 11**, train 1436' from DER, 697' left of centerline, 23' AGL/662' MSL. Tree 2285' from DER, 1090' left of centerline, 100' AGL/659' MSL. **Rwy 18**, trees beginning 43' from DER, 326' right of centerline, up to 100' AGL/600' MSL. Rising terrain beginning 279' from DER, 167' right of centerline, up to 575' MSL. Tree 92' from DER, 306' left of centerline, 100' AGL/568' MSL. Rising terrain beginning 262' from DER, 69' left of centerline, up to 555' MSL. **Rwy 29**, trees beginning 2728' from DER, 322' right of centerline, up to 100' AGL/627' MSL. Trees beginning 938' from DER, 184' left of centerline, up to 100' AGL/627' MSL. **Rwy 36**, trees beginning 250' from DER, 43' right of centerline, up to 100' AGL/584' MSL. Trees beginning 695' from DER, 128' left of centerline, up to 100' AGL/639' MSL. Pole 582' from DER, 319' left of centerline, 35' AGL/574' MSL.

NAHUNTA, GA

BRANTLEY COUNTY (4J1)

ORIG 12012 (FAA)

DEPARTURE PROCEDURE: **Rwy 19**, climb heading 192° to 1500 before turning right.

NOTE: **Rwy 1**, vehicles beginning 56' from DER, left and right of centerline, up to 17' AGL/101' MSL. Trees beginning 1105' from DER, right of centerline, up to 100' AGL/181' MSL. Transmission towers beginning 768' from DER, 174' right of centerline, up to 32' AGL/112' MSL. Terrain and trees 85' from DER, 343' right of centerline, 17' AGL/92' MSL. Trees beginning 25' from DER, 24' left of centerline, up to 100' AGL/165' MSL. Transmission towers and buildings beginning 15' from DER, 160' left of centerline, up to 43' AGL/118' MSL. Utility pole 9' from DER, 280' left of centerline, 12' AGL/87' MSL. **Rwy 19**, vehicle on roadway 29' from DER, 260' left of centerline, 15' AGL/94' MSL. Trees beginning 5' from DER, 272' right of centerline, up to 100' AGL/144' MSL. Rising terrain and trees beginning 274' from DER, 229' right of centerline, up to 21' AGL/96' MSL. Trees beginning 939' from DER, 26' left of centerline, up to 100' AGL/132' MSL. Terrain 462' from DER, 581' left of centerline, 17' AGL/92' MSL.

ONEONTA, AL

ROBBINS FIELD (20A)

ORIG 12152 (FAA)

DEPARTURE PROCEDURE: **Rwy 5**, climb heading 058° to 2000 before turning. **Rwy 23**, climb heading 250° to 2400 before turning.

NOTE: **Rwy 5**, trees abeam DER, left and right of centerline, up to 100' AGL/1229' MSL. **Rwy 23**, trees abeam DER, left and right of centerline, up to 100' AGL/1229' MSL.

OZARK, AL

BLACKWELL FIELD

TAKE-OFF MINIMUMS: **Rwy 30**, 500-1DEPARTURE PROCEDURE: **Rwy 30**, climb on runway heading to 1000 before turning northbound.

12152

TAKE-OFF MINIMUMS AND (OBSTACLE) DEPARTURE PROCEDURES

TAKE-OFF MINIMUMS AND (OBSTACLE) DEPARTURE PROCEDURES

12152

PELL CITY, AL

ST CLAIR COUNTY (PLR)
AMDT 2 09351 (FAA)

TAKE-OFF MINIMUMS: **Rwy 21**, 300-1 or std. w/min. climb of 312' per NM to 800.

DEPARTURE PROCEDURE: **Rwy 21**, climb heading 205° to 1000 before turning east.

NOTE: **Rwy 3**, multiple trees and beginning 60' from DER, 311' left of centerline, up to 100' AGL/567' MSL. Multiple trees beginning 221' from DER, 34' right of centerline, up to 100' AGL/572' MSL. Windsock 221' from DER, 549' right of centerline, 9' AGL/505' MSL. **Rwy 21**, multiple trees beginning 328' from DER, 260' left of centerline, up to 100' AGL/679' MSL. Multiple trees beginning 498' from DER, 473' right of centerline, up to 100' AGL/592' MSL. Multiple poles beginning 230' from DER, 473' left of centerline, up to 25' AGL/544' MSL. Vehicle on road 103' from DER, left to right of centerline, up to 15' AGL/502' MSL. Building 1029' from DER, 516' left of centerline, 13' AGL/532' MSL.

PERRY, GA

PERRY-HOUSTON COUNTY (PXE)
ORIG 07354 (FAA)

TAKE-OFF MINIMUMS: **Rwy 36**, std. w/min. climb of 230' per NM to 1200 or 900-2½ for climb in visual conditions.

DEPARTURE PROCEDURE: **Rwy 36**, for climb in visual conditions: cross Perry-Houston County Airport at or above 1200 MSL before proceeding on course.

NOTE: **Rwy 18**, vehicles on roadway beginning 30' from departure end of runway, 389' right of centerline, up to 15' AGL/414' MSL. Trees and pylons beginning 133' from departure end of runway, 317' right of centerline, up to 72' AGL/461' MSL. Trees beginning 1127' from departure end of runway, 152' left of centerline, up to 100' AGL/519' MSL. **Rwy 36**, trees left and right of centerline beginning 2806' from departure end of runway, up to 100' AGL/529' MSL.

PINE MOUNTAIN, GA

HARRIS COUNTY (PIM)
AMDT 1 10322 (FAA)

TAKE-OFF MINIMUMS: **Rwy 9**, std. w/min. climb of 233' per NM to 1800 or 1100-2½ for climb in visual conditions.

DEPARTURE PROCEDURE: **Rwy 9**, climbing left turn heading 360° to 2400 before turning east or for climb in visual conditions cross Harris County airport at or above 1900 before proceeding on course.

NOTE: **Rwy 9**, terrain and trees beginning at DER, left and right of centerline, up to 100' AGL/1039' MSL. **Rwy 27**, terrain and trees beginning 55' from DER, left and right of centerline, up to 115' AGL/1015' MSL.

PLAINS, GA

PETERSON FIELD (7A9)
ORIG 09267 (FAA)

NOTE: **Rwy 18**, trees beginning 80' from DER, left and right of centerline, up to 100' AGL/629' MSL. Road and vehicle 47' from DER, 14' left of centerline, up to 15' AGL/539' MSL. **Rwy 36**, trees beginning 49' from DER, 136' right of centerline, up to 100' AGL/639' MSL. Trees beginning 1670' from DER, 535' left of centerline, up to 100' AGL/619' MSL.

PRATTVILLE, AL

PRATTVILLE-GROUBY FIELD (1A9)
AMDT 1 11349 (FAA)

TAKE-OFF MINIMUMS: **Rwy 27**, 400-2½ or std. w/min. climb of 550' per NM to 800.

DEPARTURE PROCEDURE: **Rwy 9**, climb heading 089° to 800 before turning. **Rwy 27**, climb heading 269° to 800 before turning.

NOTE: **Rwy 9**, trees beginning 216' from DER, 44' left of centerline, up to 100' AGL/315' MSL. Trees beginning 489' from DER, 87' right of centerline, up to 100' AGL/290' MSL. **Rwy 27**, trees beginning 157' from DER, 64' left of centerline, up to 100' AGL/510' MSL. Trees beginning 235' from DER, 101' right of centerline, up to 100' AGL/605' MSL. Terrain beginning 3410' from DER, 241' right of centerline, 315' MSL. Terrain beginning 4827' from DER, 4' left of centerline, 414' MSL.

QUITMAN, GA

QUITMAN BROOKS COUNTY (4J5)
ORIG 11013 (FAA)

TAKE-OFF MINIMUMS: **Rwy 10**, std. w/min. climb of 290' per NM to 1000, or 1000-2½ for climb in visual conditions.

DEPARTURE PROCEDURE: **Rwy 10**, for climb in visual conditions: cross Quitman Brooks County Airport at or above 1300 before proceeding on course. **Rwy 28**, climb heading 279° until 700 before turning south.

NOTE: **Rwy 10**, numerous trees beginning 363' from DER, 248' right of centerline, up to 94' AGL/278' MSL. Multiple utility poles and structures beginning 184' from DER, 146' right of centerline, up to 44' AGL/224' MSL. **Rwy 28**, numerous trees beginning 496' from DER, 342' right of centerline, up to 79' AGL/250' MSL. Numerous trees beginning 38' from DER, 219' left of centerline, up to 100' AGL/280' MSL.

REDSTONE AAF (KHUA)

REDSTONE ARSENAL, AL 09043
Rwy 17, 500-3*
Rwy 35**

* Or standard with minimum climb rate of 240/NM to 1500.

** Standard with a minimum climb rate of 240/NM to 1500.

DEPARTURE PROCEDURE: **Rwy 17**, climb rwy hdgt to 1700 before proceeding on course. **Rwy 35**, climb rwy hdgt to 1900 before proceeding on course. Cross DER at or above 22'.

TAKE-OFF OBSTACLES: **Rwy 17**: Multiple buildings beginning 2.4 NM from DER, 3805' left of centerline, up to 482' AGL/1092' MSL.

REFORM, AL

NORTH PICKENS (3M8)
AMDT 1 11349 (FAA)

TAKE-OFF MINIMUMS: **Rwy 1**, 300-1 or std. w/min. climb of 270' per NM to 500. **Rwy 19**, 500-2 or std. w/min. climb of 499' per NM to 1000.

NOTE: **Rwy 1**, trees beginning at DER, 115' left of centerline, up to 40' AGL/399' MSL. Trees beginning at DER, 181' right of centerline, up to 40' AGL/280' MSL. Vehicles on roadway, 1447' from DER, on centerline, up to 15' AGL/275' MSL.

Rwy 19, trees beginning at DER, 108' left of centerline, up to 40' AGL/269' MSL. Trees and terrain beginning 15' from DER, 21' right of centerline, up to 40' AGL/269' MSL. Towers 1.2 NM from DER, 1851' right of centerline, up to 450' AGL/695' MSL.

12152

TAKE-OFF MINIMUMS AND (OBSTACLE) DEPARTURE PROCEDURES

TAKE-OFF MINIMUMS AND (OBSTACLE) DEPARTURE PROCEDURES

12152

REIDSVILLE, GA

SWINTON SMITH FLD AT REIDSVILLE
MUNI

DEPARTURE PROCEDURE: **Rwy 11**, climb on runway heading to 700 before turning left.

ROME, GA

RICHARD B. RUSSELL

TAKE-OFF MINIMUMS: **Rwy 1**, standard with minimum climb of 365' per NM to 2100, or 1500 - 2½ for climb in visual conditions. **Rwy 25**, standard with minimum climb of 430' per NM to 1900, or 1500 - 2½ for climb in visual conditions.

DEPARTURE PROCEDURE: **Rwys 1, 25**, for climb in visual conditions cross Richard B. Russell airport at or above 2,000 MSL before proceeding on course. **Rwy 7**, climb heading 072° to 1400 before proceeding on course. **Rwy 19**, climb heading 187° to 1400 before proceeding on course.

NOTE: **Rwy 1**, tree 1,557' from departure end of runway, 490' left of centerline, 42' AGL/671' MSL. Numerous trees beginning 4,577' from departure end of runway, 250' left of centerline, up to 93' AGL/762' MSL. Tree 3,650' from departure end of runway, 423' right of centerline, 78' AGL/727' MSL. **Rwy 7**, numerous trees beginning 103' from departure end of runway, 267' right of centerline, up to 70' AGL/689' MSL. Numerous trees beginning 38' from departure end of runway, 110' left of centerline, up to 72' AGL/609' MSL. Numerous trees beginning 929' from departure end of runway, 133' right of centerline, up to 76' AGL/685' MSL. Tree 2,145' from departure end of runway, 63' right of centerline, 78' AGL/687' MSL. Numerous trees beginning 1,716' from departure end of runway, 265' left of centerline, 92' AGL/691' MSL. **Rwy 19**, bush 91' from departure end of runway, 290' right of centerline, 3' AGL/642' MSL. Terrain 301' from departure end of runway, 342' right of centerline, 646' MSL. Tree 556' from departure end of runway, 602' right of centerline, 67' AGL/716' MSL. Tree 904' from departure end of runway, 134' left of centerline, 38' AGL/657' MSL. Tree 775' from departure end of runway, 501' left of centerline, 53' AGL/672' MSL. Tree 3,025' from departure end of runway, 57' right of centerline, 88' AGL/717' MSL. Tree 2,980' from departure end of runway, 70' left of centerline 86' AGL/715' MSL. Numerous trees beginning 2,867' from departure end of runway, 569' left of centerline, up to 94' AGL/723' MSL. **Rwy 25**, bush 300' from departure end of runway, 328' right of centerline, 10' AGL/659' MSL. Numerous trees beginning 622' from departure end of runway, 252' right of centerline, up to 76' AGL/725' MSL. Road 528' from departure end of runway, 9' left of centerline, 663' AGL. Numerous trees beginning 547' from departure end of runway, 164' left of centerline, up to 86' AGL/735' MSL. Tree 1,428' from departure end of runway, 27' left of centerline, 83' AGL/712' MSL. Tree 1,571' from departure end of runway, 35' right of centerline, 80' AGL/709' MSL. Tree 2,344' from departure end of runway, 243' right of centerline, 97' AGL/726' MSL.

RUSSELLVILLE, AL

BILL PUGH FIELD (M22)
ORIG-A 11125 (FAA)

TAKE-OFF MINIMUMS: **Rwy 20**, std. w/a min. climb of 451' per NM to 1500, or 400-2 w/a min. climb of 321' per NM to 1600, or 1000-2½ for climb in visual conditions.

DEPARTURE PROCEDURE: **Rwy 2**, climb heading 018° to 1400 before proceeding on course. **Rwy 20**, climb heading 198° to 1300 before proceeding on course, or for climb in visual conditions: cross Bill Pugh Field at or above 1600 before proceeding on course.

NOTE: **Rwy 2**, trees beginning 592' from DER, 200' right of centerline, up to 100' AGL/839' MSL. Trees beginning 3598' from DER, 283' left of centerline, up to 100' AGL/839' MSL. **Rwy 20**, trees beginning 1228' from DER, 51' left of centerline, up to 100' AGL/1159' MSL. Trees beginning 1993' from DER, 380' right of centerline, up to 100' AGL/1159' MSL.

ST ELMO, AL

ST ELMO (2R5)
ORIG 08045 (FAA)

DEPARTURE PROCEDURE: **Rwy 6**, climb heading 059° to 800 before proceeding on course.

NOTE: **Rwy 6**, trees 1499' from departure end of runway, on centerline, 45' AGL/174' MSL. **Rwy 24**, tree 1730' from departure end of runway, 716' left of centerline, 100' AGL/229' MSL. Trees 1076' from departure end of runway, on centerline, 34' AGL/164' MSL.

ST MARYS, GA

ST MARYS

TAKE-OFF MINIMUMS: **Rwy 13**, 300-1¼ or std. with a min. climb of 341' per NM to 400. **Rwy 4**, NA-Restricted airspace.

DEPARTURE PROCEDURE: **Rwy 31**, climbing right turn via heading 320° to 2300 before proceeding northwestbound.

NOTE: **Rwy 13**, trees 761' from departure end of runway, 33' AGL/55' MSL. Stack 6235' from departure end of runway, 855' right of centerline, 275' AGL/287' MSL. **Rwy 22**, trees 578' from departure end of runway, 63' AGL/86' MSL. **Rwy 31**, trees 1399' from departure end of runway, 60' AGL/84' MSL.

SANDERSVILLE, GA

KAOLIN FIELD

TAKE-OFF MINIMUMS: **Rwy 13**, 500-3 or std. with a min. climb of 280' per NM to 1100.

NOTE: **Rwy 13**, tower 2.21 NM from departure end of runway, 1.02 NM right of centerline, 405' AGL/875' MSL.

31 MAY 2012 to 28 JUN 2012

31 MAY 2012 to 28 JUN 2012

12152

TAKE-OFF MINIMUMS AND (OBSTACLE) DEPARTURE PROCEDURES

TAKE-OFF MINIMUMS AND (OBSTACLE) DEPARTURE PROCEDURES

12152

SAVANNAH, GA

SAVANNAH/HILTON HEAD INTL (SAV)
AMDT 6 09183 (FAA)

DEPARTURE PROCEDURE: **Rwy 1**, climb heading 006° to 600 before proceeding southwest. **Rwy 10**, climb heading 097° to 700 proceeding southwest. **Rwy 19**, climb heading 186° to 1300 before turning right. **Rwy 28**, climb heading 277° to 1600 before turning left.

NOTE: **Rwy 1**, fence and antennas beginning 94' from DER, 416' right of centerline, up to 17' AGL/63' MSL. **Rwy 10**, trees beginning 199' from DER, 521' right of centerline, up to 90' AGL/114' MSL. **Rwy 19**, trees beginning 1504' from DER, 782' left of centerline up to 64' AGL/78' MSL. Trees beginning 864' from DER, 665' right of centerline, up to 57' AGL/71' MSL. **Rwy 28**, pole 937' from DER, 650' left of centerline, 33' AGL/47' MSL. Trees 1297' from DER, 772' right of centerline, up to 77' AGL/91' MSL.

SCOTTSBORO, AL

SCOTTSBORO MUNI-WORD FIELD (4A6)
ORIG 07354 (FAA)

TAKE-OFF MINIMUMS: **Rwy 4**, std. w/ min. climb of 290' per NM to 1800 or 1400-2½% for climb in visual conditions. **Rwy 22**, std. w/ min. climb of 400' per NM to 1800 or 1400-2½% for climb in visual conditions.

DEPARTURE PROCEDURE: **Rwy 4**, climb heading 040° to 1800 before proceeding on course or for climb in visual conditions: cross Scottsboro Muni-Word Field at or above 1900 MSL before proceeding on course. **Rwy 22**, climb heading 220° to 1800 before proceeding on course or for climb in visual conditions: cross Scottsboro Muni-Word Field at or above 1900 MSL before proceeding on course.

NOTE: **Rwy 4**, trees beginning 0' from departure end of runway, 290' left of centerline, up to 100' AGL/749' MSL. **Rwy 22**, trees beginning 0' from departure end of runway, 311' right of centerline, up to 100' AGL/779' MSL. Trees beginning 441' from departure end of runway, 319' left of centerline, up to 100' AGL/899' MSL.

SELMA, AL

CRAIG FIELD

NOTE: **Rwy 15**, trees beginning 2440' from departure end of runway, 231' right of centerline, up to 73' AGL/232' MSL. Trees beginning 1687' from departure end of runway, 568' left of centerline, up to 61' AGL/220' MSL. **Rwy 33**, tree 1416' from departure end of runway, 607' right of centerline, 62' AGL/211' MSL. Trees beginning 885' from departure end of runway, 439' left of centerline, up to 68' AGL/207' MSL.

SWAINSBORO, GA

EMANUEL COUNTY (SBO)
AMDT 1 07354 (FAA)

NOTE: **Rwy 13**, multiple poles and trees beginning 110' from departure end of runway, 53' left of centerline, up to 99' AGL/388' MSL. Multiple poles and trees beginning 861' from departure end of runway, 45' right of centerline, up to 75' AGL/394' MSL. **Rwy 31**, multiple trees beginning 3390' from departure end of runway, 29' left of centerline, up to 100' AGL/419' MSL. Multiple trees beginning 206' from departure end of runway, 210' right of centerline, up to 45' AGL/354' MSL.

SYLACAUGA, AL

MERKEL FIELD - SYLACAUGA MUNI

TAKE-OFF MINIMUMS: **Rwy 27**, 300-2.
DEPARTURE PROCEDURE: **Rwy 27**, climb runway heading to 1500, then climb on course.

SYLVANIA, GA

PLANTATION AIRPARK (JYL)
ORIG 09043 (FAA)

NOTE: **Rwy 5**, trees and bushes beginning 1651' from departure end of runway, 203' left of centerline, up to 100' AGL/259' MSL. Trees beginning 1' from departure end of runway, 115' right of centerline, up to 100' AGL/289' MSL. **Rwy 15**, trees beginning 617' from departure end of runway, 660' left of centerline, up to 100' AGL/279' MSL. Trees beginning 1022' from departure end of runway, 640' right of centerline, up to 100' AGL/269' MSL. **Rwy 23**, trees beginning 15' from departure end of runway, 314' left of centerline, up to 100' AGL/269' MSL. Trees beginning 23' from departure end of runway, 364' right of centerline, up to 100' AGL/279' MSL. Vehicle on road 225' from departure end of runway, 87' right of centerline, 15' AGL/198' MSL. **Rwy 33**, trees beginning 1289' from departure end of runway, 461' left of centerline, up to 100' AGL/269' MSL. Trees beginning 107' from departure end of runway, 368' right of centerline, up to 100' MSL/279' MSL.

TALLADEGA, AL

TALLADEGA MUNI (ASN)
AMDT 2 11013 (FAA)

DEPARTURE PROCEDURE: **Rwy 3**, climb heading 038° to 2100 before turning right. **Rwy 21**, climb heading 233° to 1900 before proceeding on course.

NOTE: **Rwy 3**, trees beginning 1216' from DER, 386' left of centerline, up to 79' AGL/629' MSL. Building 1319' from DER, 371' left of centerline, 35' AGL/565' MSL. Building 2949' from DER, 468' left of centerline, 53' AGL/603' MSL. Trees beginning 1801' from DER, 47' right of centerline, up to 80' AGL/612' MSL. Poles beginning 904' from DER, 305' right of centerline, up to 70' AGL/614' MSL. **Rwy 21**, trees beginning 7' from DER, 324' left of centerline, up to 17' AGL/526' MSL. Trees beginning 14' from DER, 413' right of centerline, up to 68' AGL/584' MSL.

THOMASTON, GA

THOMASTON-UPSON COUNTY (OPN)
AMDT 2 09295 (FAA)

TAKE-OFF MINIMUMS: **Rwy 30**, std. w/ a min. climb of 268' per NM to 1800, or 1100-2½% for climb in visual conditions.

DEPARTURE PROCEDURE: **Rwy 30**, for climb in visual conditions: cross Thomaston-Upson County airport at or above 1700 before proceeding on course.

NOTE: **Rwy 30**, trees beginning 802' from DER, 444' right of centerline, up to 108' AGL/867' MSL. Power transmission lines 1625' from DER left to right of centerline 123' AGL/863' MSL. **Rwy 12**, trees beginning 2885' from DER, 510' left of centerline, up to 104' AGL/894' MSL.

31 MAY 2012 to 28 JUN 2012

31 MAY 2012 to 28 JUN 2012

12152

TAKE-OFF MINIMUMS AND (OBSTACLE) DEPARTURE PROCEDURES



TAKE-OFF MINIMUMS AND (OBSTACLE) DEPARTURE PROCEDURES



THOMASVILLE, GA

THOMASVILLE RGNL

TAKE-OFF MINIMUMS: **Rwy 4**, trees beginning 928' from departure end of runway, 594' left of centerline, 64' AGL/284' MSL. Numerous trees beginning 2205' from departure end of runway, 769' right of centerline, up to 85' AGL/355' MSL. **Rwy 22**, terrain 96' from departure end of runway, 462' right of centerline, 244' MSL. Building 132' from departure end of runway, 497' from centerline, up to 17' AGL/253' MSL. **Rwy 32**, trees beginning 4364' from departure end of runway, 558' right of centerline, up to 100' AGL/379' MSL.

THOMSON, GA

THOMSON-MCDUFFIE COUNTY (HQU) ORIG 08045 (FAA)

TAKE-OFF MINIMUMS: **Rwy 28**, 200-1¼ or std. w/min. climb of 240' per NM to 700, or alternatively, with standard takeoff minimums and a normal 200'/NM climb gradient, takeoff must occur no later than 1800' prior to departure end of runway.

NOTE: **Rwy 10**, numerous trees beginning abeam departure end of runway, 31' left of centerline, up to 100' AGL/599' MSL. Building 934' from departure end of runway, 19' left of centerline, 50' AGL/549' MSL. Numerous trees beginning 377' from departure end of runway, 94' right of centerline, up to 100' AGL/599' MSL. **Rwy 28**, tree 5,715' from departure end of runway, 553' left of centerline, 100' AGL/619' MSL. Numerous trees beginning 32' from departure end of runway, 216' right of centerline, up to 100' AGL/579' MSL. Numerous trees beginning 8' from departure end of runway, 53' left of centerline, up to 100' AGL/629' MSL.

TIFTON, GA

HENRY TIFT MYERS

TAKE-OFF MINIMUMS: **Rwy 33**, 400-2 or std. with a min. climb of 250' per NM to 900.

DEPARTURE PROCEDURE: **Rwy 28**, climb runway heading to 1200 before turning northbound.

NOTE: **Rwy 10**, tree, 192' from departure end of runway, 276' right of centerline, 70' AGL/382' MSL. Tree, 872' from departure end of runway, 296' left of centerline, 70' AGL/390' MSL. **Rwy 21**, tank, 3200' from departure end of runway, 670' left of centerline, 173' AGL/523' MSL. **Rwy 33**, tree, 384' from departure end of runway, 526' right of centerline, 90' AGL/411' MSL. Tree, 391' from departure end of runway, 405' right of centerline, 85' AGL/403' MSL.

TOCCOA, GA

TOCCOA RG LETOURNEAU FIELD

TAKE-OFF MINIMUMS: **Rwy 2**, std. w/min. climb of 430' per NM to 2600 or 1600-3 for climb in visual conditions. **Rwy 27**, std. w/min. climb of 478' per NM to 2500 or 1600-3 for climb in visual conditions.

DEPARTURE PROCEDURE: **Rwys 2, 27**, for climb in visual conditions: cross Toccoa RG Letourneau Field Airport at or above 2600 MSL before proceeding on course. **Rwy 9**, climb heading 093° to 2000 before turning on course. **Rwy 20**, climb heading 206° to 2200 before turning on course.

NOTE: **Rwy 2**, tree 142' from departure end of runway, 458' right of centerline, 57' AGL/1032' MSL, scattered trees 71' from departure end of runway, 271' right of centerline, 57' AGL/989' MSL. **Rwy 9**, terrain 99' from departure end of runway, 177' right of centerline, 975' MSL, terrain 108' from departure end of runway, 126' left of centerline, 955' MSL. **Rwy 20**, pylon 376' from departure end of runway, 520' left of centerline, 23' AGL/1008' MSL. Multiple trees 589' from departure end of runway, 196' right of centerline, up to 66' AGL/1120' MSL, multiple trees 553' from departure end of runway, 62' left of centerline, up to 89' AGL/1107' MSL. **Rwy 27**, WLET 1420 1.1 NM from departure end of runway, 1818' left of centerline, 354' AGL/1364' MSL.

TROY, AL

TROY MUNI

TAKE-OFF MINIMUMS: **Rwy 7, 14, 25, 32**, 300-2 or std. with a min. climb of 280' per NM to 3200.

DEPARTURE PROCEDURE: **Rwys 7, 14, 25**, climb runway heading to 1200 before turning on course.

Rwy 32, climbing right turn heading 360° to 2500 before turning on course.

NOTE: **Rwy 7**, numerous trees 728' left of departure end of runway 447' MSL. Hanger 517' right of departure end of runway 404' MSL. **Rwy 14**, numerous trees 400' left of departure end of runway 440' MSL and 515' right of departure end of runway 437' MSL. **Rwy 25**, numerous trees 541' left of departure end of runway 477' MSL and 624' left of departure end of runway 459' MSL. **Rwy 32**, numerous trees 325' left of departure end of runway 413' MSL and 692' left of departure end of runway 425' MSL.

31 MAY 2012 to 28 JUN 2012

31 MAY 2012 to 28 JUN 2012



TAKE-OFF MINIMUMS AND (OBSTACLE) DEPARTURE PROCEDURES

12152

TUSCALOOSA, AL

TUSCALOOSA RGNL (TCL)

AMDT 2A 11069 (FAA)

TAKE-OFF MINIMUMS: **Rwy 4**, 300-2 or std. w/min. climb of 271' per NM to 500. **Rwy 11**, 400-2¼ or std. w/ a min climb of 217' per NM to 600, or alternatively, w/ standard takeoff minimums and a normal 200'/NM climb gradient, takeoff must occur no later than 1900' prior to departure end of runway. **Rwy 29**, 300-2¼ or std. w/a min. climb of 207' per NM to 600, or alternatively, w/ standard takeoff minimums and a normal 200'/NM climb gradient, takeoff must occur no later than 1400' prior to departure end of runway.

NOTE: **Rwy 4**, tower 4604' from DER, 344' left of centerline, 125' AGL/320' MSL. Trees beginning 1129' from DER, left and right of centerline, up to 103' AGL/263' MSL. Trees beginning 4525' from DER, left and right of centerline, up to 95' AGL/330' MSL. Trees beginning 1.3 NM from DER, 523' left of centerline, up to 100' AGL/409' MSL. Trees beginning 1621' from departure end of runway, 702' left of centerline, up to 70' AGL/409' MSL. Trees beginning 1061' from departure end of runway, 117' right of centerline, up to 76' AGL/225' MSL. **Rwy 11**, multiple trees beginning 562' from DER, 157' right of centerline, up to 78' AGL/251' MSL. multiple trees beginning 575' from DER, 62' left of centerline, up to 78' AGL/216' MSL. Trees beginning 576' from departure end of runway, 566' left of centerline, up to 58' AGL/197' MSL. Trees beginning 717' from departure end of runway, 480' right of centerline, up to 90' AGL/249' MSL, tower 2 NM from departure end of runway, 1178' left of centerline, 239' AGL/494' MSL. **Rwy 22**, trees beginning 423' from departure end of runway, 587' left of centerline, up to 63' AGL/203' MSL. Tree 1419' from departure end of runway, 506' right of centerline, 54' AGL/195' MSL. **Rwy 29**, light pole 684' from departure end of runway, 384' left of centerline 61' AGL/213' MSL. Trees beginning 839' from departure end of runway, 169' left of centerline up to 100' AGL/449' MSL. Trees beginning 381' from departure end of runway, 229' right of centerline, up to 89' AGL/258' MSL. Railroad 623' from departure end of runway, 157' right of centerline, 25' AGL/190' MSL. Vehicle on road 413' from departure end of runway, 136' right of centerline, 17' AGL/181' MSL.

TUSKEGEE, AL

MOTON FIELD MUNI (06A)

ORIG 09099 (FAA)

NOTE: **Rwy 13**, trees beginning 5' from DER, 295' right of centerline, up to 100' AGL/389' MSL. Trees beginning 6' from DER, 304' left of centerline, up to 100' AGL/359' MSL. **Rwy 31**, trees beginning 12' from DER, 219' right of centerline, up to 100' AGL/359' MSL. Vehicle 464' from DER, 601' left of centerline, up to 15' AGL/284' MSL. Trees beginning 929' from DER, 568' left of centerline, up to 100' AGL/369' MSL.

VALDOSTA, GA

VALDOSTA RGNL (VLD)

AMDT 2 10322 (FAA)

TAKE-OFF MINIMUMS: **Rwy 31**, std. w/min. climb of 220' per NM to 900 or 900-2½ for climb in visual conditions. DEPARTURE PROCEDURE: **Rwy 31**, for climb in visual conditions: cross Valdosta RGNL Airport at or above 1000 MSL before proceeding on course.

NOTE: **Rwy 4**, trees beginning 57' from DER, 227' right of centerline, up to 100' AGL/267' MSL. Trees beginning 1524' from DER, 92' left of centerline, up to 100' AGL/319' MSL. Vehicles on roadway beginning 845' from DER, 605' right of centerline, up to 15' AGL/214' MSL. **Rwy 13**, trees beginning 1316' from DER, 125' left of centerline, up to 100' AGL/299' MSL. Trees beginning 1803' from DER, 44' right of centerline, up to 100' AGL/289' MSL. **Rwy 17**, trees beginning 1794' from DER, 454' right of centerline, up to 100' AGL/309' MSL. Trees beginning 861' from DER, 110' left of centerline, up to 100' AGL/289' MSL. **Rwy 22**, railroad 722' from DER, 324' right of centerline, 23' AGL/220' MSL. Trees beginning 75' from DER, 159' right of centerline, up to 100' AGL/250' MSL. Trees beginning 70' from DER, 165' left of centerline, up to 100' AGL/241' MSL. Bush 244' from DER, 77' left of centerline, up to 16' AGL/206' MSL. **Rwy 31**, trees beginning 465' from DER, 277' right of centerline, up to 100' AGL/270' MSL. Trees beginning 600' from DER, 2' left of centerline, up to 100' AGL/309' MSL. **Rwy 35**, trees beginning 1653' from DER, 246' right of centerline, up to 100' AGL/256' MSL. Trees beginning 1669' from DER, 135' left of centerline, up to 100' AGL/289' MSL.

VERNON, AL

LAMAR COUNTY (M55)

AMDT 2 10266 (FAA)

TAKE-OFF MINIMUMS: **Rwy 17**, 300-1.

NOTE: **Rwy 17**, vehicle 2255' from DER, 72' left of centerline, 15' AGL/515' MSL. Trees beginning 382' from DER, 110' right of centerline, up to 100' AGL/579' MSL. Trees beginning 181' from DER, 168' left of centerline, up to 100' AGL/596' MSL. **Rwy 35**, trees beginning 26' from DER, 235' left of centerline, up to 100' AGL/559' MSL. Trees beginning 305' from DER, 328' right of centerline, up to 100' AGL/559' MSL.

31 MAY 2012 to 28 JUN 2012

31 MAY 2012 to 28 JUN 2012

12152

TAKE-OFF MINIMUMS AND (OBSTACLE) DEPARTURE PROCEDURES

TAKE-OFF MINIMUMS AND (OBSTACLE) DEPARTURE PROCEDURES

12152

VIDALIA, GA

VIDALIA RGNL (VDI)
AMDT 1 08045 (FAA)

TAKE-OFF MINIMUMS: **Rwy 31**, 300-1½ or std. w/ min. climb of 251' per NM to 500, or alternatively, w/ standard takeoff minimums and a normal 200'/NM climb gradient, takeoff must occur no later than 2200' prior to departure end of runway.

NOTE: **Rwy 6**, trees beginning 324' from departure end of runway, 573' left of centerline, up to 48' AGL/307' MSL.

Rwy 13, vehicles on roadway abeam departure end of runway, 350' right of centerline, 15' AGL/294' MSL. Trees beginning abeam departure end of runway, 400' right of centerline, up to 100' AGL/379' MSL. Trees beginning abeam departure end of runway, 350' left of centerline, up to 100' AGL/379' MSL. Trees beginning 847' from departure end of runway, on centerline, up to 100' AGL/369' MSL. **Rwy 24**, trees beginning 74' from departure end of runway, 520' left of centerline, up to 100' AGL/379' MSL. Trees beginning 8' from departure end of runway, 286' right of centerline, up to 100' AGL/379' MSL. **Rwy 31**, tank 5440' from departure end of runway, 1110' right of centerline, 155' AGL/443' MSL. Trees beginning abeam departure end of runway, 334' left of centerline, up to 100' AGL/369' MSL. Trees beginning 77' from departure end of runway, 364' right of centerline, up to 100' AGL/379' MSL.

WASHINGTON, GA

WASHINGTON-WILKES COUNTY

TAKE-OFF MINIMUMS: **Rwy 31**, 300-1 or std. with a min. climb of 270' per NM to 900.

WAYCROSS, GA

WAYCROSS-WARE COUNTY

NOTE: **Rwy 5**, numerous trees beginning 399' from departure end of runway, 300' left of centerline, up to 20' AGL/157' MSL. **Rwy 23**, numerous trees beginning 839' from departure end of runway, on centerline, up to 32' AGL/173' MSL. **Rwy 31**, numerous trees beginning 200' from departure end of runway, on centerline, up to 20' AGL/159' MSL. **Rwy 36**, numerous trees beginning 603' from departure end of runway, 312' left of centerline, up to 52' AGL/192' MSL.

WAYNESBORO, GA

BURKE COUNTY

NOTE: **Rwy 8**, trees beginning 485' from departure end of runway, 129' left of centerline, up to 100' AGL/440' MSL. Trees beginning 2228' from departure end of runway, 82' right of centerline, up to 100' AGL/409' MSL. **Rwy 26**, trees beginning 3053' from departure end of runway, 800' left of centerline, up to 100' AGL/439' MSL. Trees beginning 3843' from departure end of runway, 416' right of centerline, up to 100' AGL/429' MSL.

WETUMPKA, AL

WETUMPKA MUNI (08A)
ORIG 10154 (FAA)

TAKE-OFF MINIMUMS: **Rwys 18, 36**, NA- Environmental. **Rwy 27**, 500-3 with minimum climb of 220' per NM to 800 or standard with minimum climb of 450' per NM to 600 or 1000-2½ for climb in visual conditions.

DEPARTURE PROCEDURE: **Rwy 27**, for climb in visual conditions cross Wetumpka Muni airport at or above 1000 before proceeding on course.

NOTE: **Rwy 9**, vehicle on roadway 471' from DER, 591' left of centerline, up to 15' AGL/214' MSL. Trees beginning 540' from DER, left and right of centerline, up to 100' AGL/299' MSL. **Rwy 27**, building 453' from DER, 434' right of centerline, 25' AGL/224' MSL. Vehicles on roadway 617' from DER, left and right of centerline, up to 15' AGL/214' MSL. Trees beginning 1314' from DER, 50' right of centerline, up to 100' AGL/309' MSL. Powerlines beginning 2243' from DER, left and right of centerline, up to 88' AGL/322' MSL. Trees beginning 3454' from DER, left and right of centerline, up to 100' AGL/409' MSL. Rising terrain and trees beginning 1.7 miles from DER, left and right of centerline, up to 200' AGL/639' MSL.

WINDER, GA

BARROW COUNTY (WDR)

AMDT 1 10098 (FAA)

TAKE-OFF MINIMUMS: **Rwy 23**, std. w/ min. climb of 210' per NM to 3100 or 900-2½ for climb in visual conditions. **Rwy 31**, 300-1½ or std. w/ min. climb of 205' per NM to 1300, or alternatively, w/ standard takeoff minimums and a normal 200'/NM climb gradient, takeoff must occur no later than 1300' prior to DER.

DEPARTURE PROCEDURE: **Rwy 23**, for climb in visual conditions: Cross Barrow County Airport at or above 1700' MSL before proceeding on course.

NOTE: **Rwy 5**, multiple trees beginning 6' from DER, 41' left of centerline, up to 48' AGL/982' MSL. Multiple trees beginning 43' from DER, 24' right of centerline, up to 74' AGL/973' MSL. **Rwy 13**, multiple trees/poles/signs beginning 835' from DER, 16' left of centerline, up to 74' AGL/983' MSL. Multiple trees/poles beginning 82' from DER, 8' right of centerline, up to 59' AGL/968' MSL. **Rwy 23**, multiple trees beginning 31' from DER, 344' left of centerline, up to 100' AGL/1041' MSL. Multiple trees beginning 487' from DER, 279' right of centerline, up to 100' AGL/1059' MSL. **Rwy 31**, multiple trees beginning 493' from DER, 30' left of centerline, up to 100' AGL/1139' MSL. Multiple trees beginning 63' from DER, 19' right of centerline, up to 57' AGL/1000' MSL. Localizer antenna 295' from DER, on centerline 8' AGL/943' MSL. Tree 7804' from DER, 1990' left of centerline, 100' AGL/1139' MSL.

31 MAY 2012 to 28 JUN 2012

31 MAY 2012 to 28 JUN 2012

12152

TAKE-OFF MINIMUMS AND (OBSTACLE) DEPARTURE PROCEDURES