

APP CRS	Rwy ldg	5009
168°	TDZE	943
	Apt Elev	951

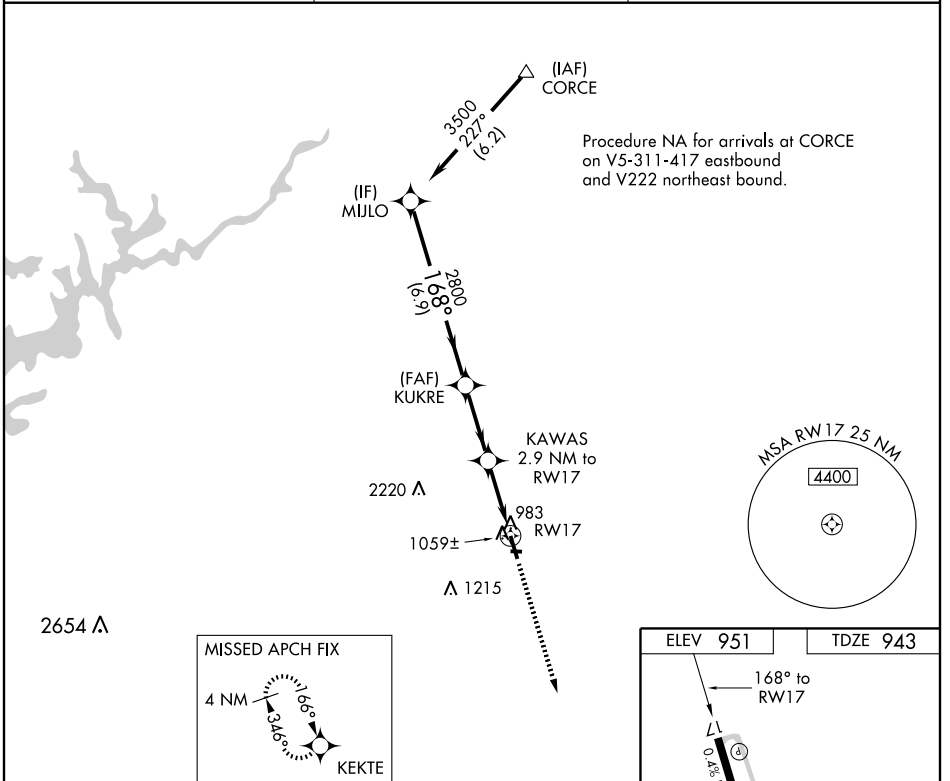
RNAV (GPS) RWY 17

JEFFERSON/ JACKSON COUNTY (19A)

▽ DME/DME RNP-0.3 NA. When local altimeter setting not received, use Winder altimeter setting and increase all MDA 40 feet, increase LNAV Cat C visibility ¼ mile. VDP NA with Winder altimeter setting.

△ NA MISSED APPROACH: Climb to 2500 direct KEKTE and hold.

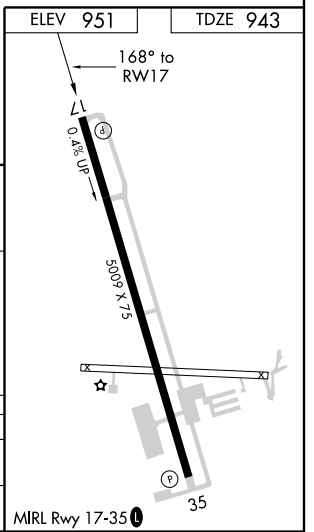
AWOS-3 118.125	ATLANTA APP CON * 132.475 291.1	UNICOM 122.8 (CTAF) 0
--------------------------	---	---------------------------------



SE-4, 31 MAY 2012 to 28 JUN 2012

SE-4, 31 MAY 2012 to 28 JUN 2012

Procedure Turn NA	MIJLO	KUKRE	KAWAS	KEKTE
	3500	2800	1900	2500
	168°	3.05°	TCH 51	1.1 NM to RWY 17
	6.9 NM	2.7 NM	1.8 NM	1.1 NM
CATEGORY	A	B	C	D
LNAV MDA	1320-1 377 (400-1)		1320-1¼ 377 (400-1¼)	
CIRCLING	1360-1 409 (500-1)	1420-1 469 (500-1)	1420-1½ 469 (500-1½)	1520-2 569 (600-2)



WAAS CH 82704 W35A	APP CRS 348°	Rwy Idg 5009 TDZE 950 Apt Elev 951
--	------------------------	---

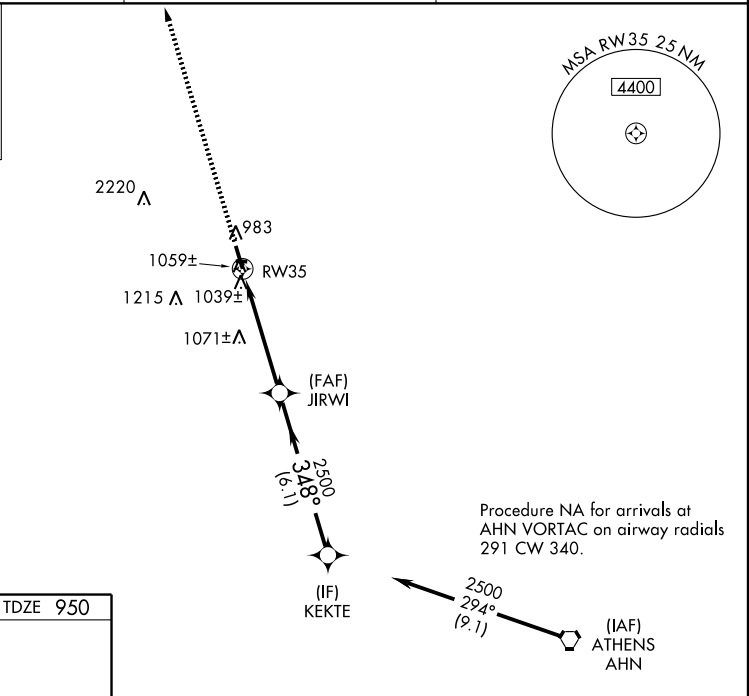
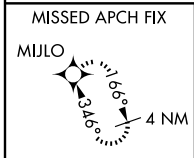
RNAV (GPS) RWY 35

JEFFERSON/ JACKSON COUNTY (19A)

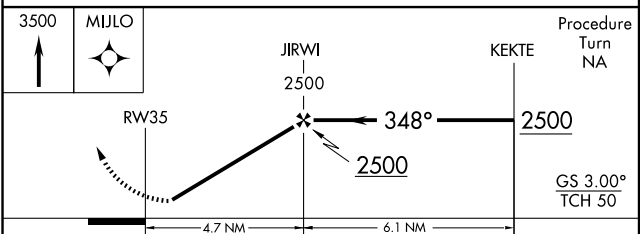
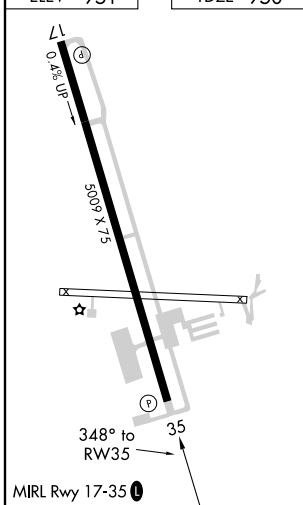
NA Baro-VNAV NA when using Winder altimeter setting. For uncompensated Baro-VNAV systems, LNAV/VNAV NA below -16°C (4°F) or above 46°C (114°F). DME/DME RNP-0.3 NA. Visibility reduction by helicopters NA. When local altimeter setting not received, use Winder altimeter setting and increase all DA 31 feet and all MDA 40 feet, increase LNAV/VNAV all Cats and LNAV Cat C visibility ¼ mile.

MISSED APPROACH: Climb to 3500 direct MIJLO and hold.

AWOS-3 118.125	ATLANTA APP CON * 132.475 291.1	UNICOM 122.8 (CTAF) 0
--------------------------	---	---------------------------------



ELEV 951	TDZE 950
----------	----------



CATEGORY	A	B	C	D
LPV DA		1200-1	250 (300-1)	
LNAV/VNAV DA		1334-1¼	384 (400-1¼)	
LNAV MDA	1320-1	370 (400-1)		1320-1¼ 370 (400-1¼)
CIRCLING	1360-1 409 (500-1)	1420-1 469 (500-1)	1420-1½ 469 (500-1½)	1520-2 569 (600-2)

SE-4, 31 MAY 2012 to 28 JUN 2012

SE-4, 31 MAY 2012 to 28 JUN 2012

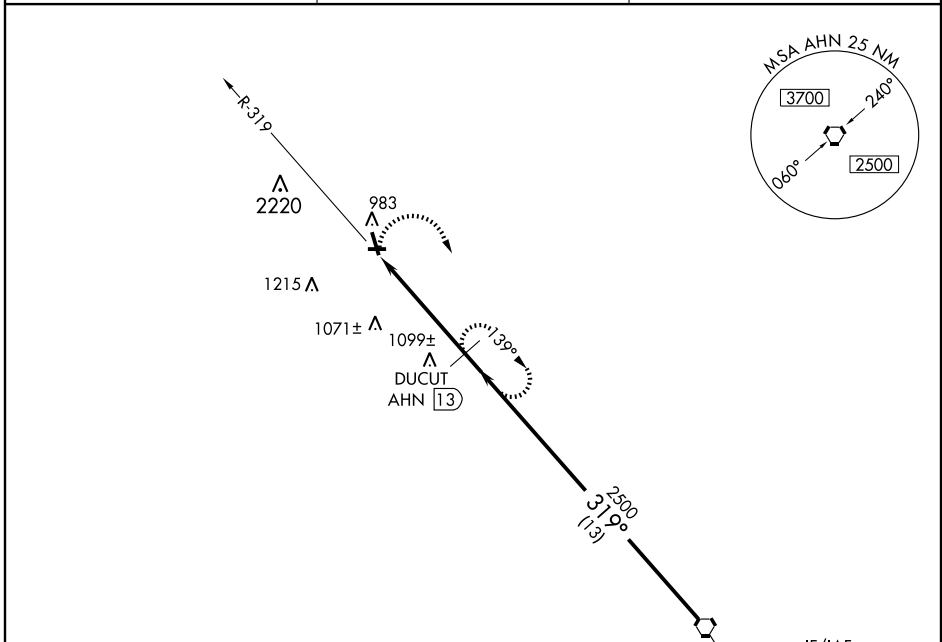
VORTAC AHN 109.6 Chan 33	APP CRS 319°	Rwy Idg TDZE 950 Apt Elev 951	5009
--	------------------------	---	-------------

VOR/DME RWY 35
JEFFERSON/JACKSON COUNTY (19A)

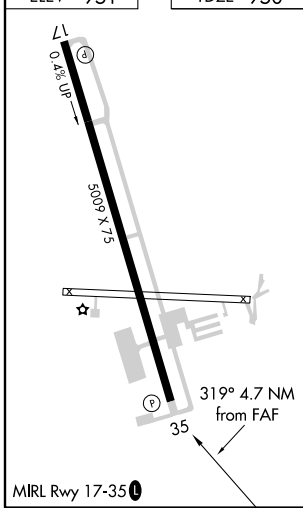
▼ Visibility reduction by helicopters NA.
▲ NA When local altimeter setting not received, use Winder altimeter setting and increase all MDA 40 feet.

MISSED APPROACH: Climbing right turn to 3000 on AHN VORTAC R-319 to DUCUT/AHN 13 DME and hold.

AWOS-3 118.125	ATLANTA APP CON ★ 132.475 291.1	UNICOM 122.8 (CTAF) 0
--------------------------	---	---------------------------------



ELEV 951	TDZE 950
----------	----------



SE-4, 31 MAY 2012 to 28 JUN 2012

SE-4, 31 MAY 2012 to 28 JUN 2012

	3000 AHN R-319	DUCUT AHN 13	DUCUT AHN 13	VORTAC
			2500	2500
		≤ 3.01° TCH 50	319°	Procedure Turn NA
		4.7 NM	13 NM	
CATEGORY	A	B	C	D
S-35	1380-1	430 (500-1)	1380-1¼ 430 (500-1¼)	1380-1½ 430 (500-1½)
CIRCLING	1380-1 429 (500-1)	1420-1 469 (500-1)	1420-1½ 469 (500-1½)	1520-2 569 (600-2)