

RNAV (GPS) RWY 23

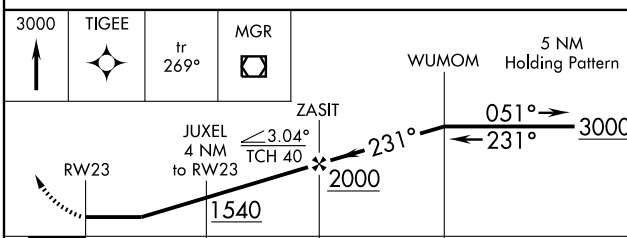
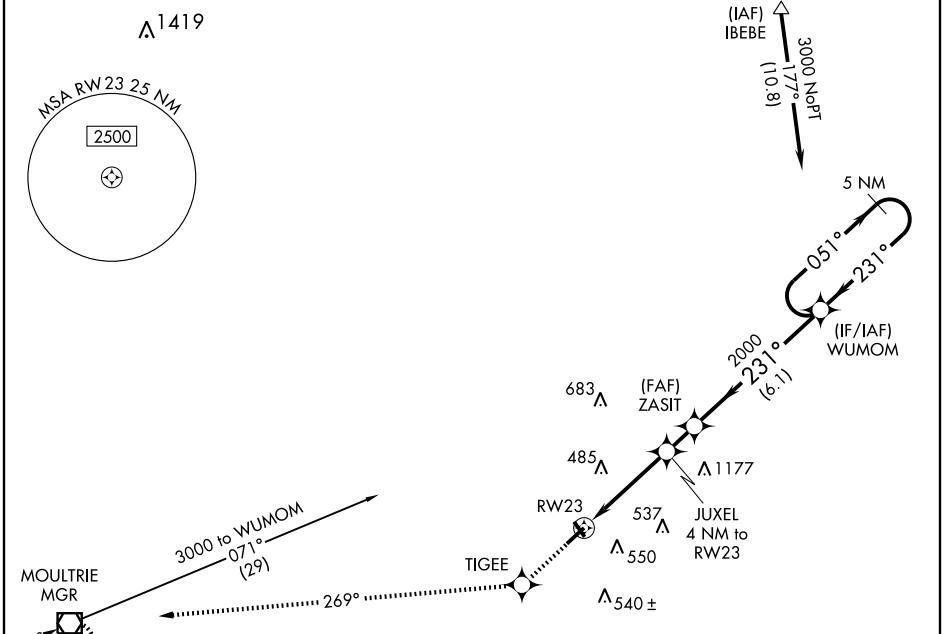
ADEL/ COOK COUNTY (15J)

APP CRS	Rwy Idg	5001
231°	TDZE	235
	Apt Elev	236

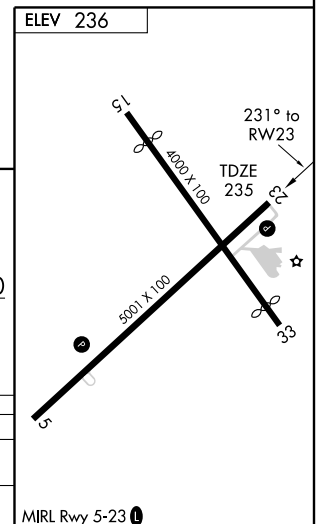
▼ Use Moultrie altimeter setting; if not received, use Valdosta Rgnl altimeter setting and increase all MDAs 20 feet. DME/DME RNP-0.3 NA.
▲NA Visibility reduction by helicopters NA.

MISSED APPROACH: Climb to 3000 direct TIGEE and via 269° track to MGR VOR/DME and hold.

MOULTRIE AWOS-3 118.925	VALDOSTA APP CON★ 126.6 285.6	UNICOM 122.8 (CTAF) 0
-----------------------------------	---	---------------------------------



CATEGORY	A	B	C	D
LNVA MDA	740-1	505 (600-1)	740-1½	505 (600-1½)
CIRCLING	960-1	724 (800-1)	960-2 724 (800-2)	960-2¼ 724 (800-2¼)



SE-4, 31 MAY 2012 to 28 JUN 2012

SE-4, 31 MAY 2012 to 28 JUN 2012

RNAV (GPS) RWY 5

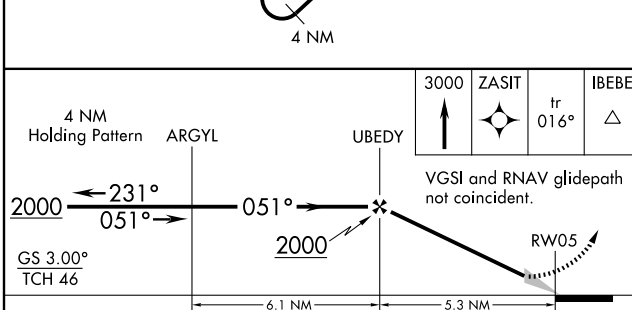
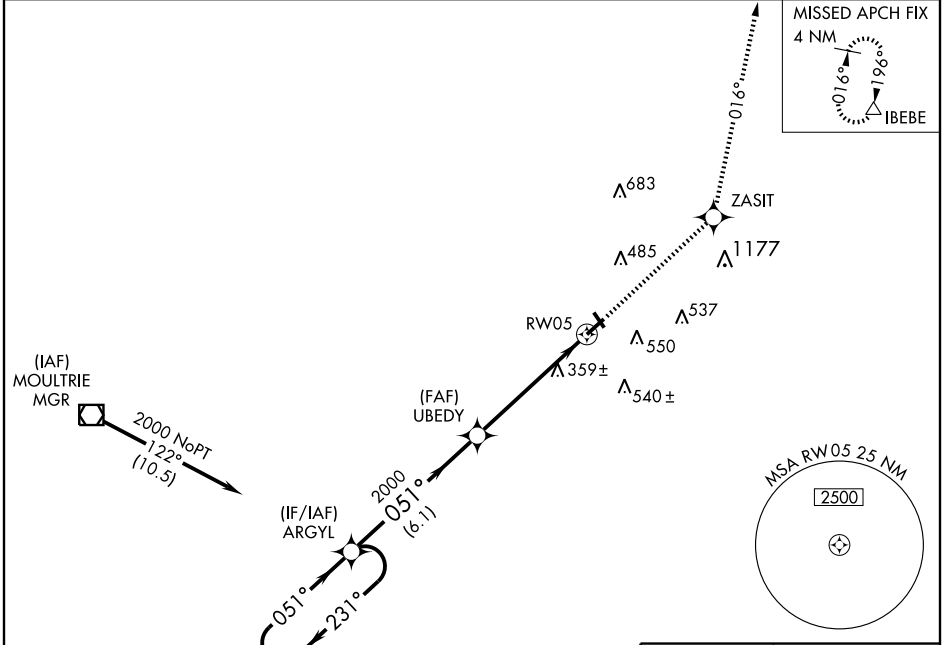
ADEL/ COOK COUNTY (15J)

WAAS CH 42506 W05A	APP CRS 051°	Rwy Idg TDZE Apt Elev	5001 235 236
--	------------------------	-----------------------------	---

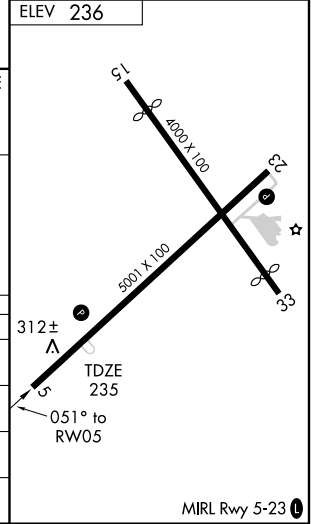
▼ DME/DME RNP-0.3 NA. Use Moultrie altimeter setting, when not received, use Valdosta Rgnl altimeter setting and increase all DAs 7 feet, and all MDAs 20 feet, and Circling Cats B, C and D visibility ¼ mile. Baro-VNAV NA.

MISSED APPROACH: Climb to 3000 direct ZASIT and via 016° track to IBEBE and hold.

MOULTRIE AWOS-3 118.925	VALDOSTA APP CON* 126.6 285.6	UNICOM 122.8 (CTAF)
-----------------------------------	---	-------------------------------



CATEGORY	A	B	C	D
LPV DA	536-1 301 (300-1)			
LNAV/ VNAV DA	633-1½ 398 (400-1½)			
LNAV MDA	800-1 565 (600-1)	800-1½ 565 (600-1½)		800-1¾ 565 (600-1¾)
CIRCLING	960-1 724 (800-1)	960-2 724 (800-2)	960-2¼ 724 (800-2¼)	



SE-4, 31 MAY 2012 to 28 JUN 2012

SE-4, 31 MAY 2012 to 28 JUN 2012