

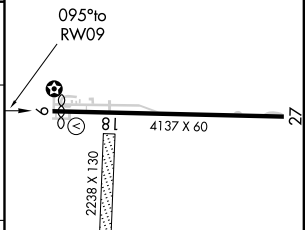
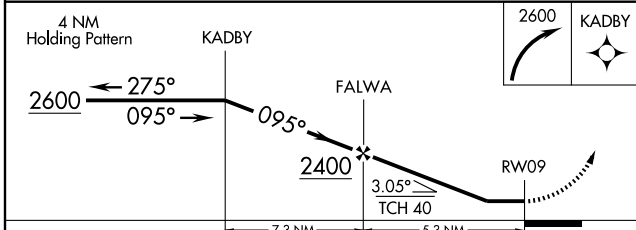
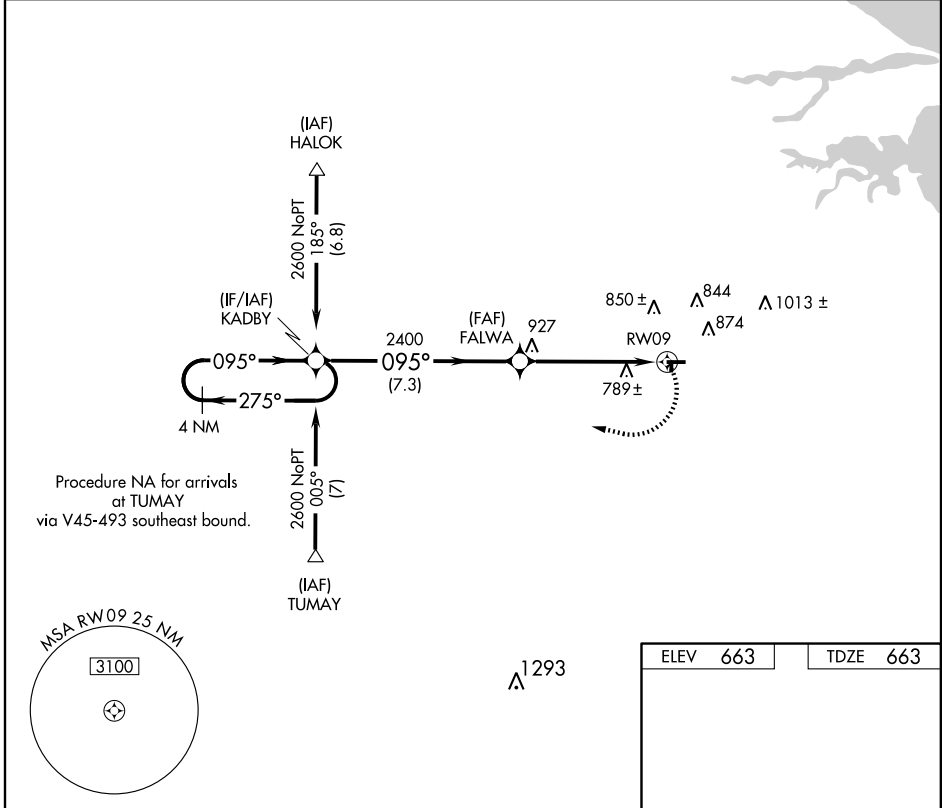
APP CRS	Rwy Idg	4011
095°	TDZE	663
	Apt Elev	663

RNAV (GPS) RWY 9

FREMONT (14G)

<p>▼ DME/DME RNP-0.3 NA. Visibility reduction by helicopters NA. Use Sandusky County Rgnl altimeter setting; when not received use Toledo Executive altimeter setting and increase all MDA 40 feet and LNAV Cat D visibility ¼ mile.</p> <p>▲ NA</p>	<p>MISSED APPROACH: Climbing right turn to 2600 direct KADBY and hold.</p>
--	---

<p>TOLEDO APP CON</p> <p>126.1 307.0</p>	<p>UNICOM</p> <p>122.8 (CTAF) 0</p>
---	--



CATEGORY	A	B	C	D
LNAV MDA	1080-1	417 (500-1)	1080-1¼	417 (500-1¼)
CIRCLING	1200-1	537 (600-1)	1200-1½	1220-2
			537 (600-1½)	557 (600-2)

LIRL Rwy 9-27 0

REIL Rwy 9 0

EC-2, 31 MAY 2012 to 28 JUN 2012

EC-2, 31 MAY 2012 to 28 JUN 2012

VOR/DME VVVV 113.1 Chan 78	APP CRS 110°	Rwy Idg TDZE 663 Apt Elev 663	4011
--	------------------------	---	-------------

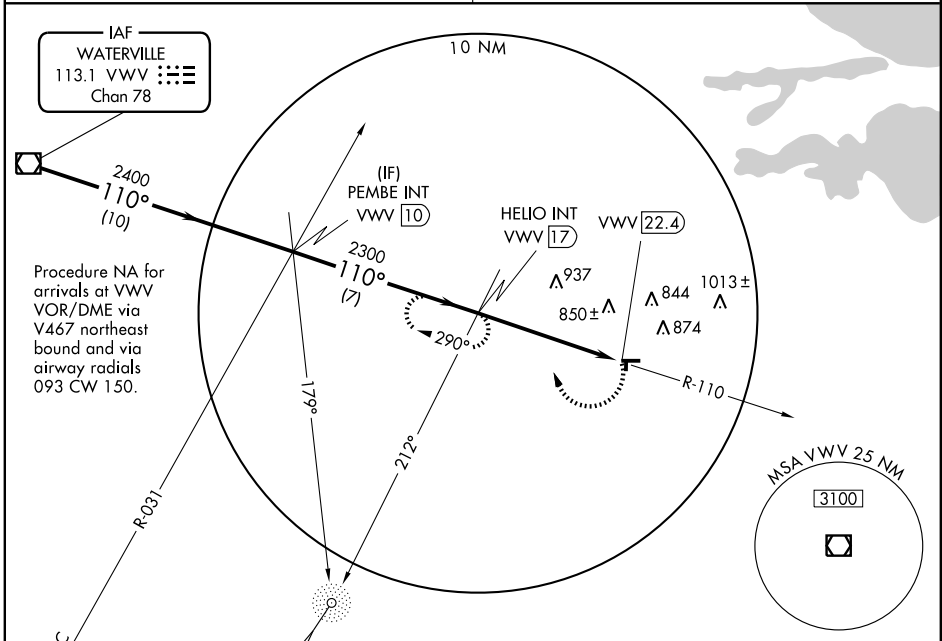
VOR RWY 9

FREMONT (14G)

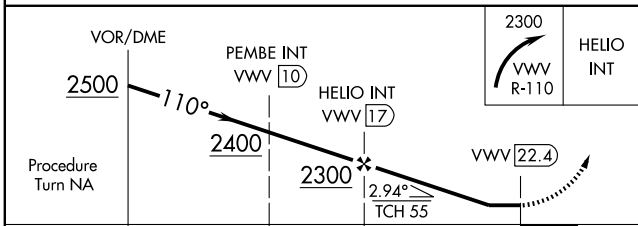
▽ ADF or DME required. Use Sandusky County Rgnl altimeter setting; when not received, use Toledo Executive altimeter setting and increase all MDA 40 feet, increase S-9 Cats C and D and Circling Cat C visibility ¼ mile.

▲ NA MISSED APPROACH: Climbing right turn to 2300 via VVVV VOR/DME R-110 to HELIO Int/VVVV 17 DME and hold.

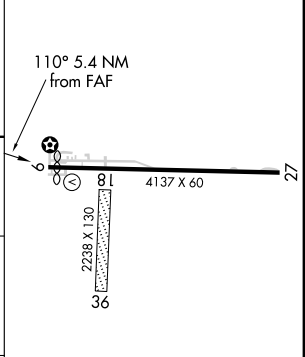
TOLEDO APP CON 126.1 307.0	UNICOM 122.8 (CTAF) 0
--------------------------------------	---------------------------------



ADF or DME REQUIRED



ELEV 663	TDZE 663
----------	----------



CATEGORY	A	B	C	D
S-9	1260-1 597 (600-1)	1260-1¼ 597 (600-1¼)	1260-1½ 597 (600-1½)	1260-1¾ 597 (600-1¾)
CIRCLING	1260-1 597 (600-1)	1260-1¼ 597 (600-1¼)	1260-1½ 597 (600-1½)	1260-2 597 (600-2)

LIRL Rwy 9-27	0
REIL Rwy 9	0
FAF to MAP 5.4 NM	
Knots	60 90 120 150 180
Min:Sec	5:24 3:36 2:42 2:10 1:48

EC-2, 31 MAY 2012 to 28 JUN 2012

EC-2, 31 MAY 2012 to 28 JUN 2012