

VOR/DME VVV	APP CRS	Rwy Idg	4011
113.1	110°	TDZE	663
Chan 78		Apt Elev	663

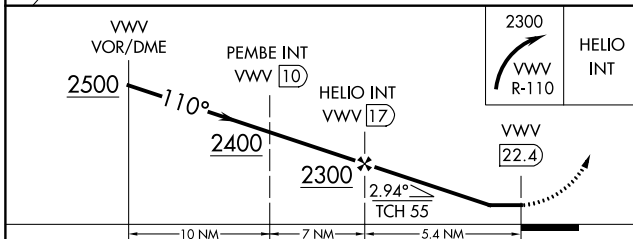
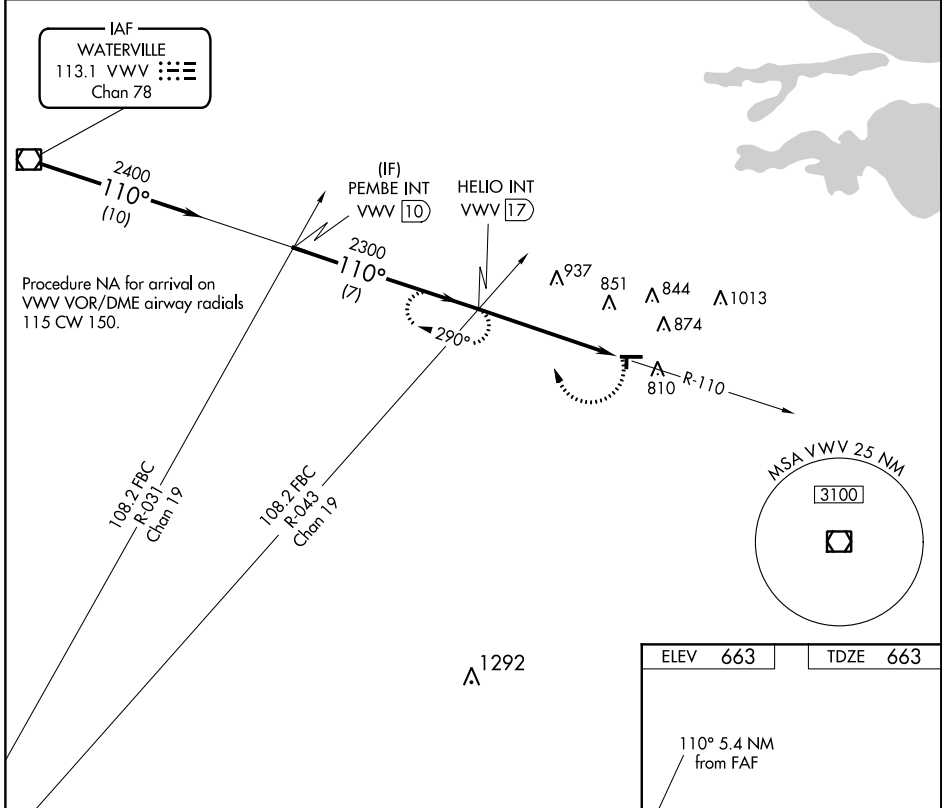
# VOR RWY 9

FREMONT (14G)

**⚠** Circling NA to Rwys 18 and 36. Rwy 9 helicopter visibility reduction below 1 SM NA. Use Sandusky County Rgnl altimeter setting; when not received, use Metcalf Field altimeter setting and increase all MDA 40 feet. Procedure NA at night.

**MISSED APPROACH:** Climbing right turn to 2300 via VVV VOR/DME R-110 to HELIO Int/VVV 17 DME and hold.

TOLEDO APP CON	UNICOM
126.1 307.0	122.8 (CTAF) 0



ELEV	663	TDZE	663
------	-----	------	-----

110° 5.4 NM from FAF

URL Rwy 9-27 **0**  
REIL Rwy 9 **0**

FAF to MAP 5.4 NM

Knots	60	90	120	150	180
Min:Sec	5:24	3:36	2:42	2:10	1:48

CATEGORY	A	B	C	D
S-9	1260-1 597 (600-1)	1260-1¼ 597 (600-1¼)	1260-1¾ 597 (600-1¾)	597 (600-1¾)
CIRCLING	1260-1 597 (600-1)	1260-1¼ 597 (600-1¼)	1260-1¾ 597 (600-1¾)	1260-2 597 (600-2)

EC-2, 12 OCT 2017 to 09 NOV 2017

EC-2, 12 OCT 2017 to 09 NOV 2017