

MILTON, WEST VIRGINIA

AL-6971 (FAA)

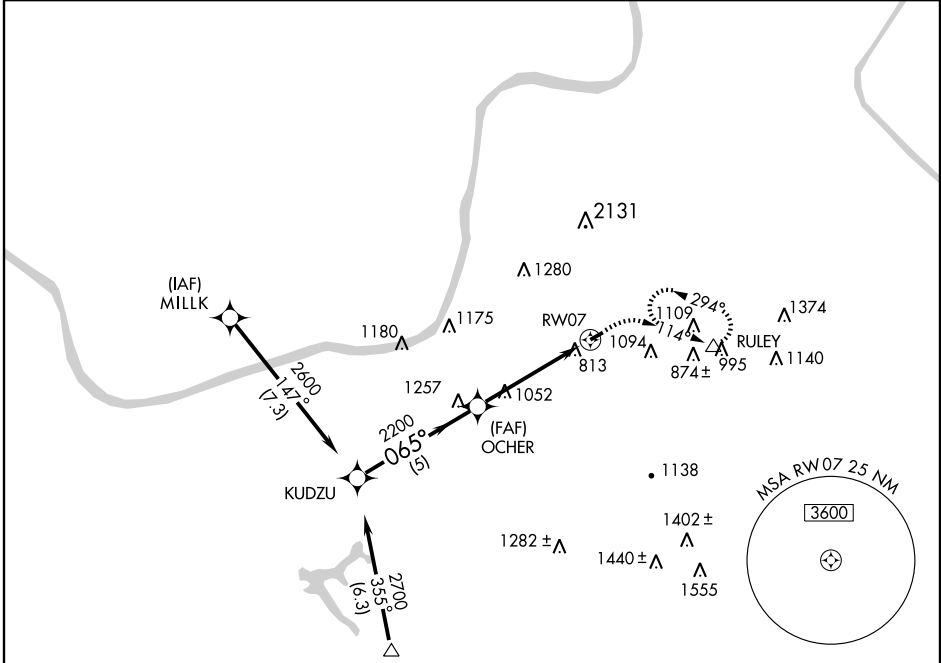
# GPS RWY 7

MILTON/ONA AIRPARK (12V)

APP CRS	Rwy Idg	<b>3020</b>
<b>065°</b>	TDZE	<b>572</b>
	Apt Elev	<b>572</b>

<p><b>▽</b> Use Huntington altimeter setting.  <b>△</b> NA Circling not authorized Northwest of Rwy 7-25.          Procedure not authorized at night.</p>	<p>MISSED APPROACH: Climb to 1500 then climbing right turn to 3100 direct RULEY and hold.</p>
---	---

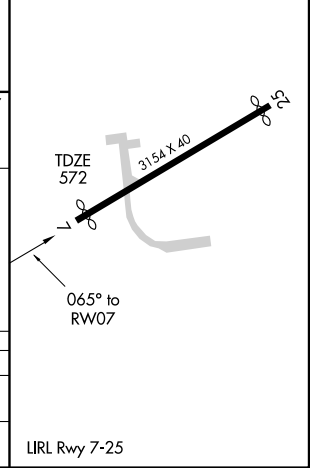
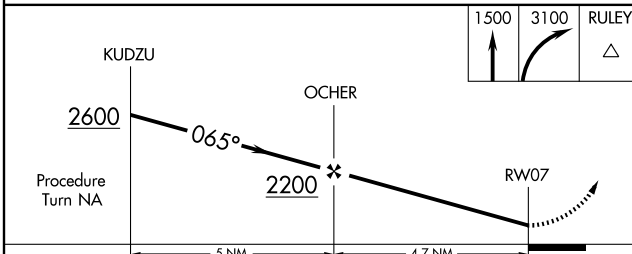
<p>CHARLESTON APP CON  <b>124.1 269.125</b></p>	<p>UNICOM  <b>122.8 (CTAF)</b></p>
---	--



NE-4, 31 MAY 2012 to 28 JUN 2012

NE-4, 31 MAY 2012 to 28 JUN 2012

ELEV 572	Rwy 7 Idg 3020'
	Rwy 25 Idg 3025'



CATEGORY	A	B	C	D
S-7	1480-1¼ 908 (1000-1¼)		NA	
CIRCLING	1480-1¼ 908 (1000-1¼)		NA	

MILTON, WEST VIRGINIA  
 Orig 07130

38°26'N - 82°12'W

MILTON/ONA AIRPARK (12V)

# GPS RWY 7

MILTON, WEST VIRGINIA

AL-6971 (FAA)

VOR-A

MILTON/ONA AIRPARK (12V)

VORTAC HVQ <b>117.4</b> Chan <b>121</b>	APP CRS <b>288°</b>	Rwy Idg TDZE Apt Elev <b>572</b>	N/A N/A <b>572</b>
---	------------------------	---	--------------------------

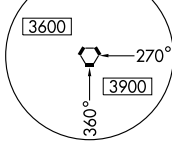
Use Huntington altimeter setting.  
 Circling not authorized Northwest of Rwy 7-25.  
 Procedure not authorized at night.

MISSED APPROACH: Climbing left turn to  
 3100 via HNN R-204 to HAITI Int and hold.

CHARLESTON APP CON  
**124.1 269.125**

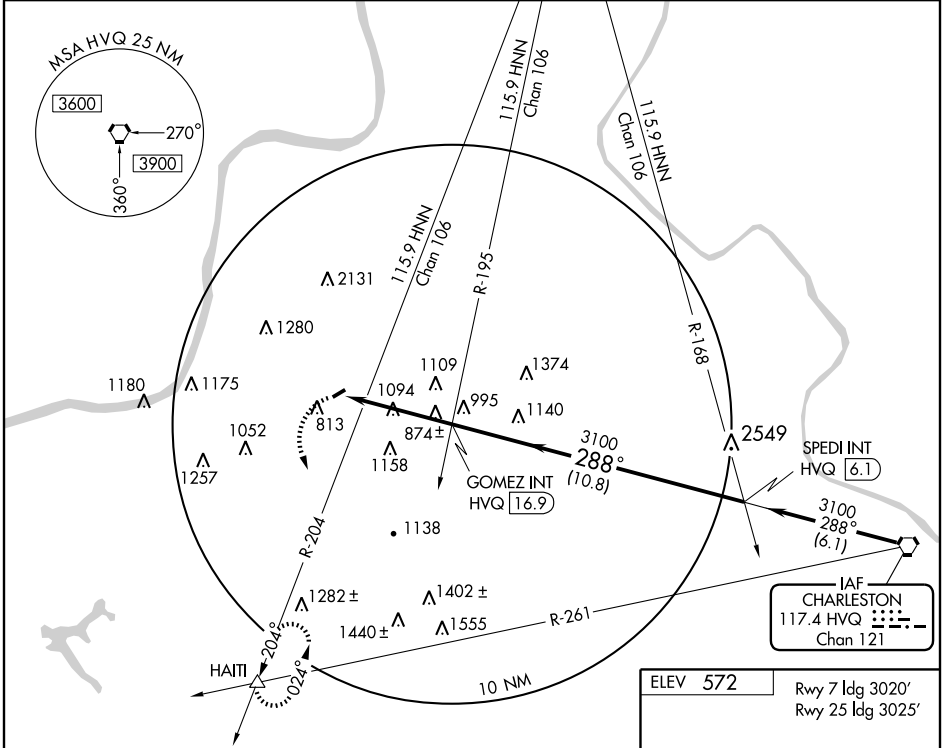
UNICOM  
**122.8 (CTAF)**

MSA HVQ 25 NM



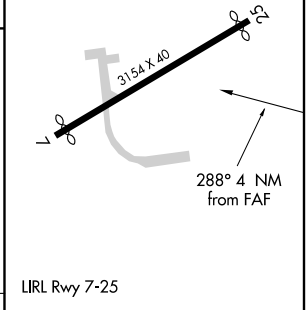
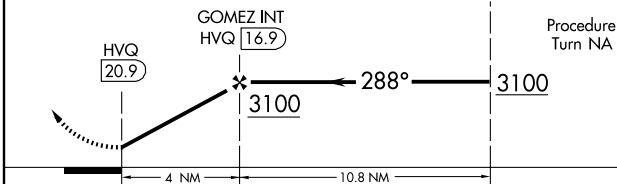
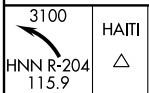
NE-4, 31 MAY 2012 to 28 JUN 2012

NE-4, 31 MAY 2012 to 28 JUN 2012



IAF  
 CHARLESTON  
 117.4 HVQ  
 Chan 121

ELEV 572 Rwy 7 Idg 3020'  
 Rwy 25 Idg 3025'



CATEGORY	A	B	C	D
CIRCLING	1500-1¼ 928 (1000-1¼)		NA	

FAF to MAP 4 NM					
Knots	60	90	120	150	180
Min:Sec	4:00	2:40	2:00	1:36	1:20

MILTON, WEST VIRGINIA  
 Amdt 2 07130

38°26'N - 82°12'W

MILTON/ONA AIRPARK (12V)

VOR-A