

APP CRS	Rwy Idg	1981
049°	TDZE	583
	Apt Elev	583

RNAV (GPS) RWY 3

ANDOVER / AEROFLEX-ANDOVER (12N)

▼ DME/DME RNP-0.3 NA. Procedure NA at night except by prior arrangement for runway lights. When local altimeter setting not received, use Caldwell altimeter setting and increase all MDA 120 feet. Visibility reduction by helicopters NA.

MISSED APPROACH: Climbing left turn to 3000 direct HOPED and hold.

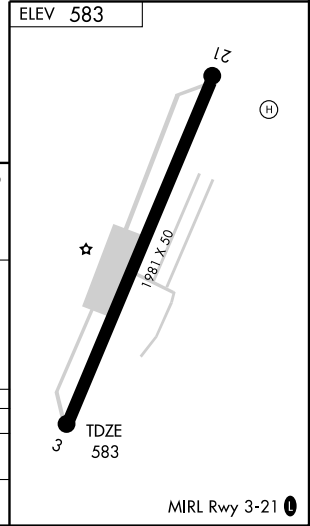
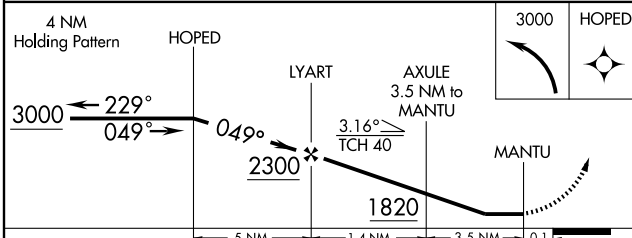
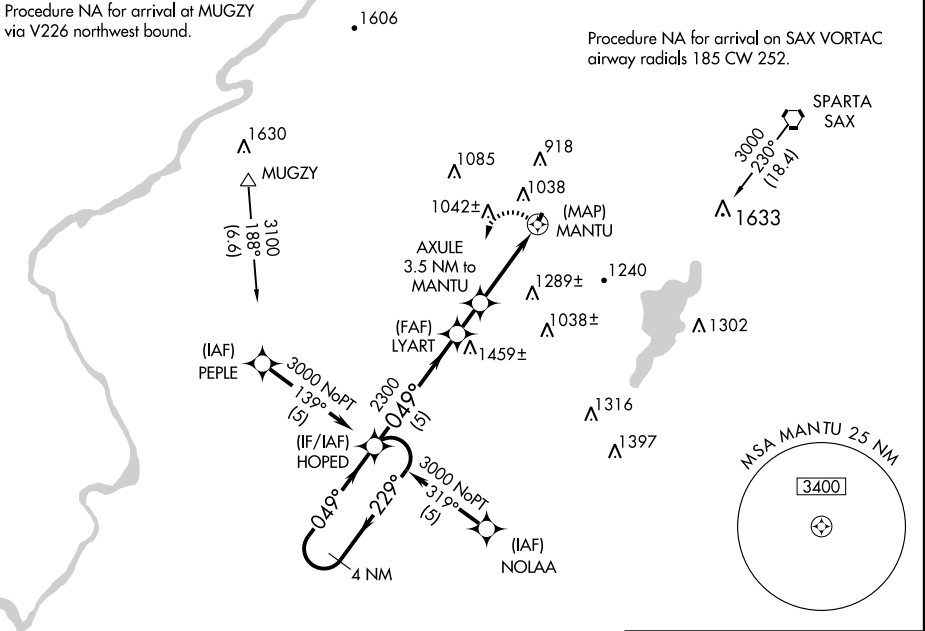
NEW YORK APP CON 127.6 379.9	UNICOM 122.8 (CTAF)	122.85 0
--	-------------------------------	-----------------

Procedure NA for arrival at MUGZY via V226 northwest bound.

Procedure NA for arrival on SAX VORTAC airway radials 185 CW 252.

NE-2, 31 MAY 2012 to 28 JUN 2012

NE-2, 31 MAY 2012 to 28 JUN 2012



CATEGORY	A	B	C	D
LNVA MDA	1340-1 757 (800-1)		NA	
CIRCLING	1560-1¼ 977 (1000-1¼)		NA	

