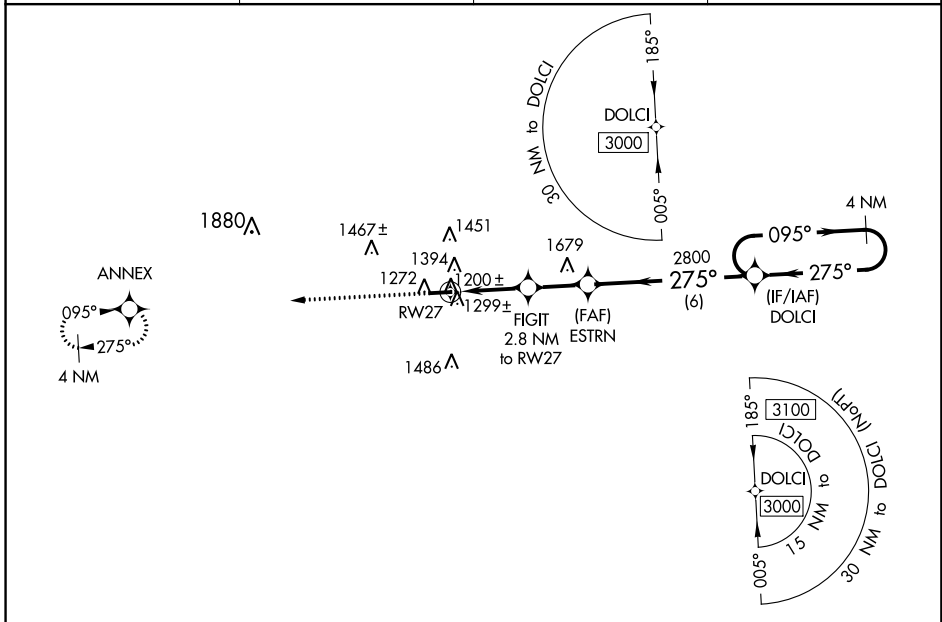


WAAS CH <b>57937</b> <b>W27A</b>	APP CRS <b>275°</b>	Rwy Idg <b>4400</b> TDZE <b>1215</b> Apt Elev <b>1227</b>
--	------------------------	---

# RNAV (GPS) RWY 27

HOLMES COUNTY (10G)

<p><b>▼</b> DME/DME RNP-0.3 NA. Helicopter visibility reduction below 1 SM NA.  <b>▲</b> Procedure NA at night. When local altimeter setting not received, use Wayne County altimeter setting and increase all MDA 60 feet. Increase LNAV Cat C/D and Circling Cat C/D visibility 1/4 mile.</p>		<p>MISSED APPROACH: Climb to 3000 direct ANNEX and hold.</p>	
AWOS-3 <b>128.325</b>	INDIANAPOLIS CENTER <b>124.45 370.9</b>	UNICOM <b>123.0 (CTAF)</b>	<b>123.4 0</b>



EC-2, 27 APR 2017 to 25 MAY 2017

EC-2, 27 APR 2017 to 25 MAY 2017

ELEV 1227	TDZE 1215
-----------	-----------

	3000	ANNEX	VGSI and descent angles not coincident (VGSI Angle 3.00/TCH 25).	4 NM Holding Pattern
CATEGORY	A	B	C	D
LP MDA		1460-1	245 (300-1)	
LNAV MDA		1560-1	345 (400-1)	
<b>C</b> CIRCLING	1760-1	533 (600-1)	1840-1 <sup>3</sup> / <sub>4</sub> 613 (700-1 <sup>3</sup> / <sub>4</sub> )	1860-2 633 (700-2)

APP CRS	Rwy Idg	<b>4400</b>
<b>095°</b>	TDZE	<b>1227</b>
	Apt Elev	<b>1227</b>

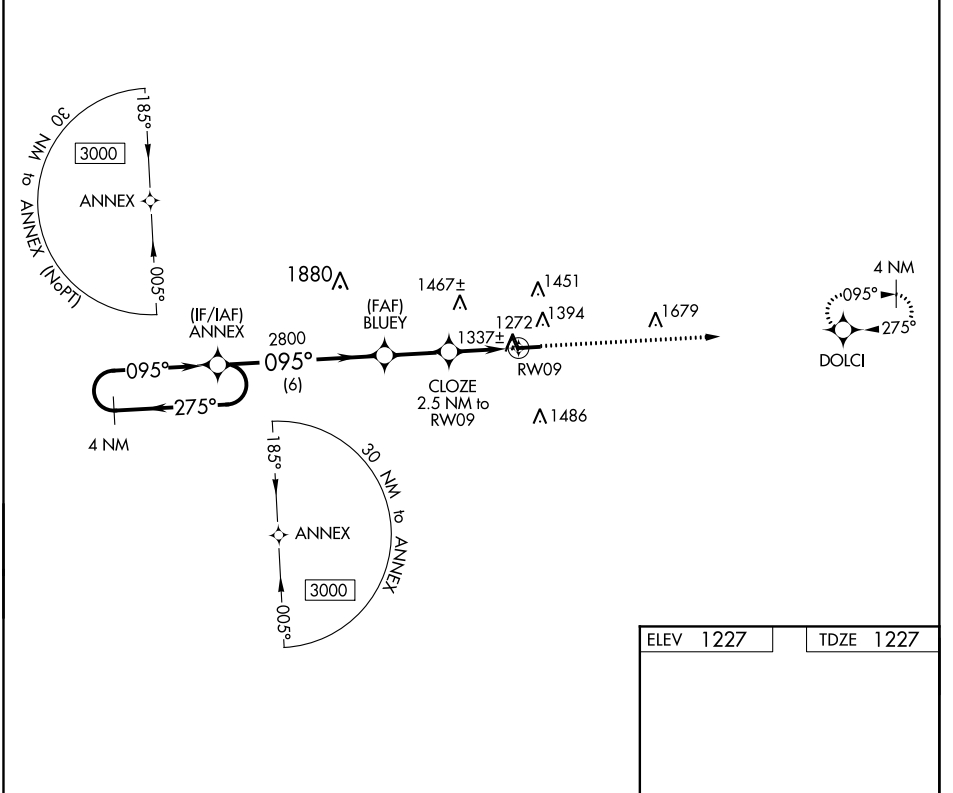
# RNAV (GPS) RWY 9

HOLMES COUNTY (10G)

**NA** DME/DME RNP-0.3 NA. Helicopter visibility reduction below 1 SM NA. Procedure NA at night. When local altimeter setting not received, use Wayne County altimeter setting and increase all MDA 60 feet. Increase LNAV and Circling Cat C/D visibility ¼ mile.

MISSED APPROACH: Climb to 3000 direct DOLCI and hold.

AWOS-3 <b>128.325</b>	INDIANAPOLIS CENTER <b>124.45 370.9</b>	UNICOM <b>123.0</b> (CTAF)	<b>123.4</b> <b>0</b>
--------------------------	--	-------------------------------	-----------------------



EC-2, 27 APR 2017 to 25 MAY 2017

EC-2, 27 APR 2017 to 25 MAY 2017

ELEV 1227		TDZE 1227	
4 NM Holding Pattern		Descent angle NA.	
ANNEX		3000 DOLCI	
BLUEY		CLOZE 2.5 NM to RW09	
RW09		RW09	
6 NM		2.3 NM	
2.5 NM			
CATEGORY	A	B	C
LNAV MDA	1600-1 373 (400-1)		
CIRCLING	1760-1 533 (600-1)	1840-1 3/4 613 (700-1 3/4)	1860-2 633 (700-2)

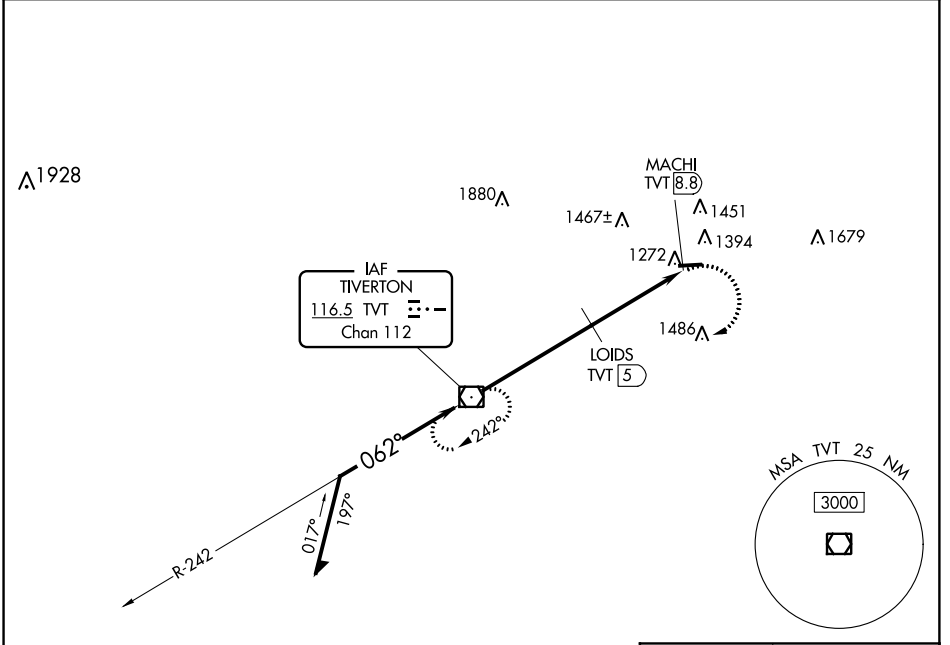
MIRL Rwy 9-27 **0**  
REIL Rwy 9 and 27 **0**

VOR/DME TWT <b>116.5</b> Chan <b>112</b>	APP CRS <b>062°</b>	Rwy Idg TDZE Apt Elev <b>N/A</b> <b>N/A</b> <b>1227</b>
--	------------------------	--

**VOR-A**  
HOLMES COUNTY (10G)

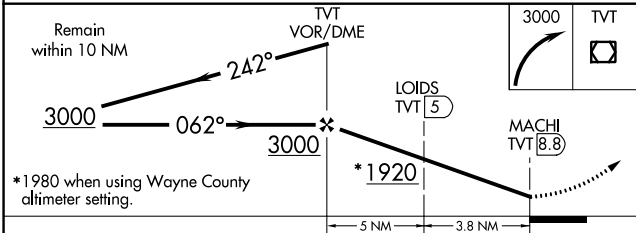
**▽** Helicopter visibility reduction below 1 SM NA. Procedure NA at night. When local altimeter setting not received, use Wayne County altimeter setting and increase all **△ NA** MDA 60 feet. Increase Circling Cat C/D visibility ¼ mile. MISSED APPROACH: Climbing right turn to 3000 direct TVT VOR/DME and hold.

AWOS-3 <b>128.325</b>	INDIANAPOLIS CENTER <b>124.45 370.9</b>	UNICOM <b>123.0</b> (CTAF)	<b>123.4 0</b>
--------------------------	--	-------------------------------	----------------



EC-2, 27 APR 2017 to 25 MAY 2017

EC-2, 27 APR 2017 to 25 MAY 2017



CATEGORY	A		B		C		D	
	1920-1	693 (700-1)	1920-2	693 (700-2)	1920-2 ¼	693 (700-2 ¼)		
LOIDS DME MINIMUMS								
CIRCLING	1760-1	533 (600-1)	1840-1 ¾	613 (700-1 ¾)	1860-2 ¼	633 (700-2 ¼)		

ELEV 1227					
REIL Rwy 9 and 27 (1)					
MIRL Rwy 9-27 (0)					
FAF to MAP 8.8 NM					
Knots	60	90	120	150	180
Min:Sec	8:48	5:52	4:24	3:31	2:56