

BROOKNEAL, VIRGINIA

AL-6852 (FAA)

# RNAV (GPS) RWY 24

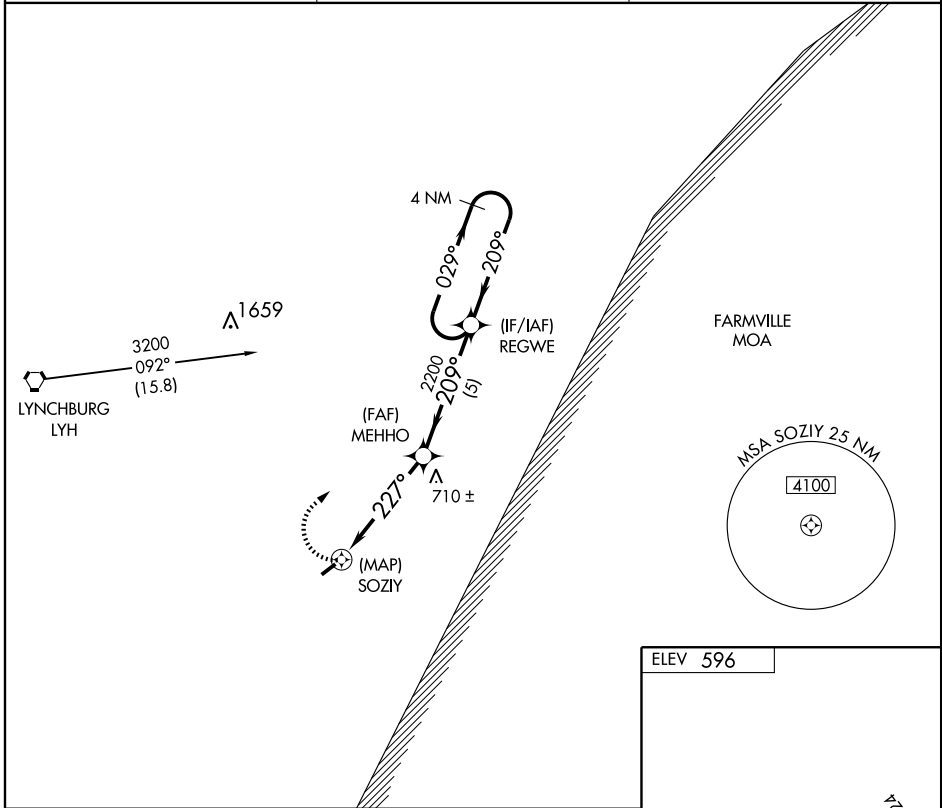
BROOKNEAL/CAMPBELL COUNTY (ØV4)

APP CRS <b>227°</b>	Rwy Idg <b>3798</b>
	TDZE <b>596</b>
	Apt Elev <b>596</b>

**▽** Use Lynchburg Rgnl/Preston Glenn Field altimeter setting.  
**△ NA** GPS or RNP-0.3 required.  
 DME/DME RNP-0.3 NA.

MISSED APPROACH: Climbing right turn to 3000 direct REGWE WP and hold.

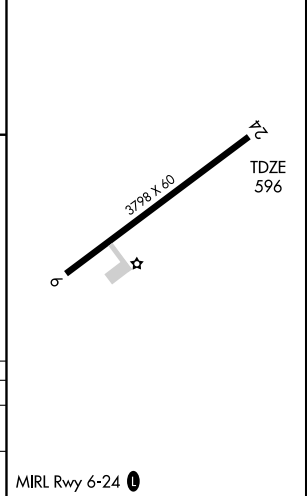
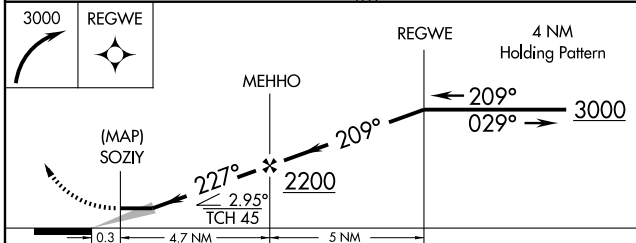
LYNCHBURG ASOS <b>119.8</b>	ROANOKE APP CON <b>135.0 254.32</b>	UNICOM <b>122.7 (CTAF) 0</b>
--------------------------------	--	---------------------------------



NE-3, 31 MAY 2012 to 28 JUN 2012

NE-3, 31 MAY 2012 to 28 JUN 2012

ELEV 596



CATEGORY	A	B	C	D
LNVA MDA	980-1	384 (400-1)		NA
CIRCLING	1160-1	564 (600-1)	1160-1½ 564 (600-1½)	NA

BROOKNEAL, VIRGINIA  
 Orig 08129

37°09'N - 79°01'W

# RNAV (GPS) RWY 24

BROOKNEAL, VIRGINIA

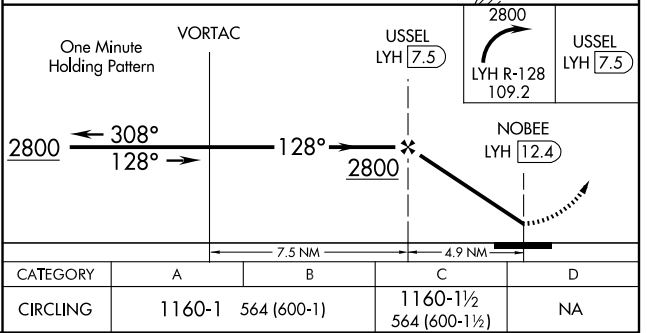
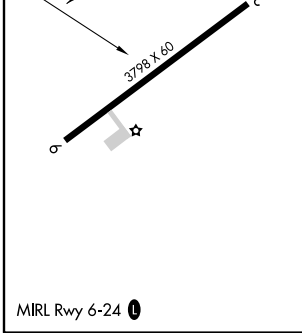
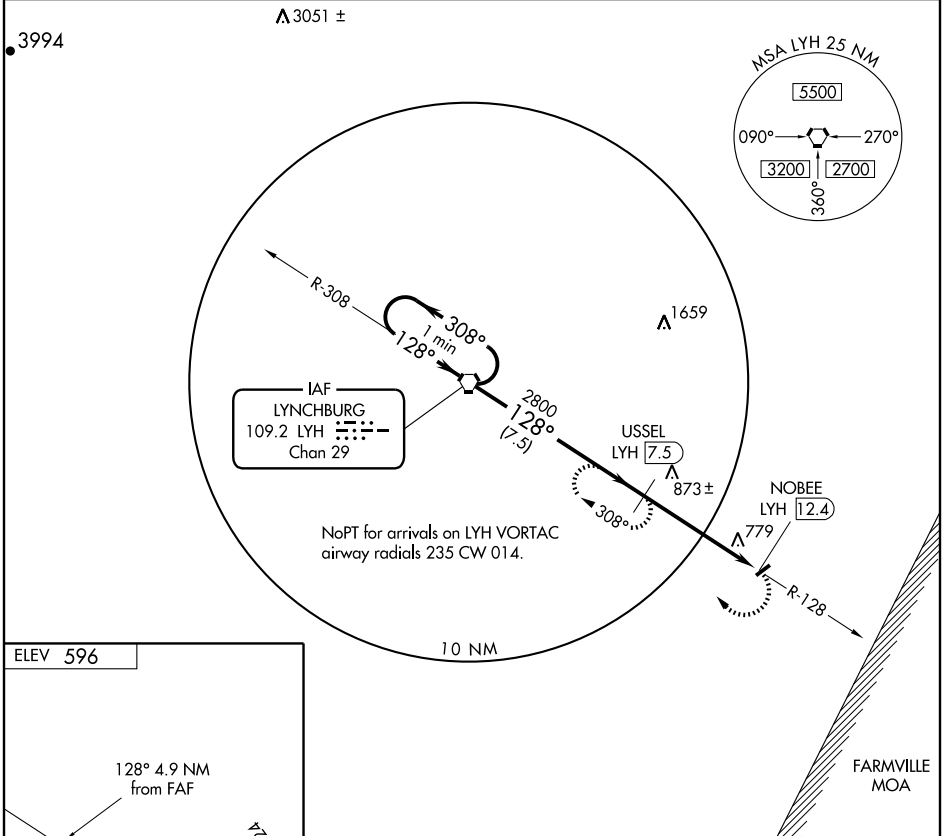
AL-6852 (FAA)

VORTAC LYH <b>109.2</b> Chan <b>29</b>	APP CRS <b>128°</b>	Rwy Idg TDZE Apt Elev	<b>N/A</b> <b>N/A</b> <b>596</b>
--	------------------------	-----------------------------	--

**VOR/DME-A**  
BROOKNEAL/CAMPBELL COUNTY (ØV4)

▼ Use Lynchburg Rgnl/Preston Glenn Field altimeter setting. MISSED APPROACH: Climbing right turn to 2800 via LYH VORTAC R-128 to USSEL 7.5 DME and hold.

LYNCHBURG ASOS <b>119.8</b>	ROANOKE APP CON <b>135.0 254.32</b>	UNICOM <b>122.7</b> (CTAF) <b>Ø</b>
--------------------------------	--	--



NE-3, 31 MAY 2012 to 28 JUN 2012

NE-3, 31 MAY 2012 to 28 JUN 2012

BROOKNEAL, VIRGINIA  
Amdt 1 08129

37°09'N - 79°01'W

BROOKNEAL/CAMPBELL COUNTY (ØV4)  
**VOR/DME-A**